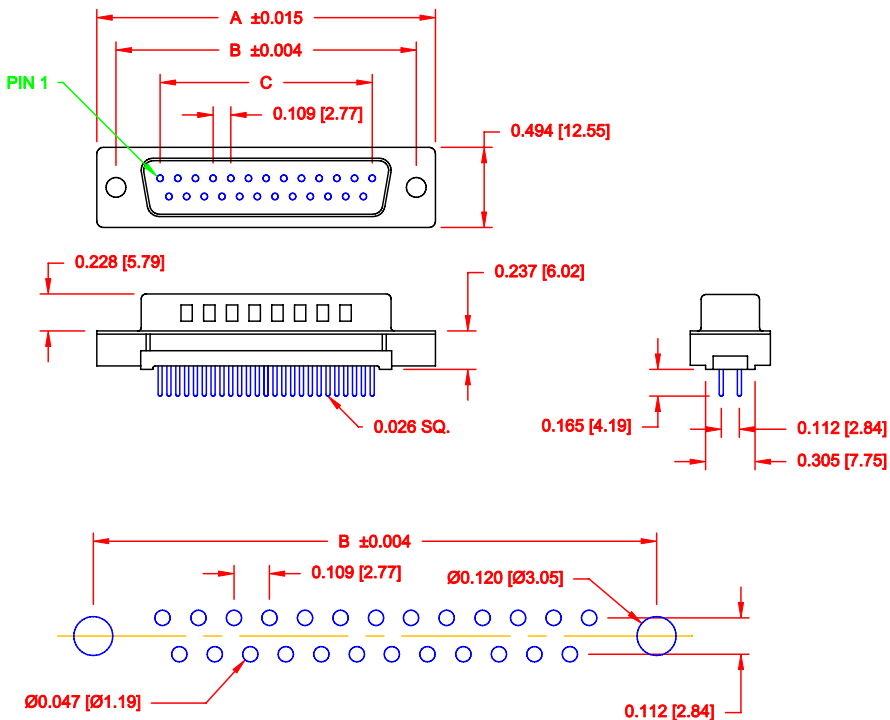


DESCRIPTION: VERTICAL MOUNT - MALE - LOW PROFILE - PLASTIC BACK



RECOMMENDED PCB LAYOUT  
SCALE = 2 : 1

NUMBER OF CONTACTS	"A" Inch (mm)	"B" Inch (mm)	"C" Inch (mm)
9	1.214 (30.84)	.984 (24.99)	.432 (10.97)
15	1.545 (39.24)	1.312 (33.32)	.756 (19.20)
25	2.088 (53.04)	1.852 (47.04)	1.304 (33.12)
37	2.730 (69.34)	2.500 (63.50)	1.956 (49.68)

**MATERIAL:**

INSULATOR: THERMOPLASTIC POLYESTER, UL94-0, CHEMICAL RESISTANCE, BLACK, 230°C PROCESS TEMP.  
SHELL: STEEL, NICKEL PLATED  
CONTACT: BRASS; GOLD FLASH OR 30 MICRO-INCH IN MATING AREA, TIN PLATED ON TAIL ENDS

**ELECTRICAL:**

CURRENT RATING: 5 AMPS  
WITHSTANDING VOLTAGE: 1,000VAC rms AT SEA LEVEL  
INSULATION RESISTANCE: 5,000 MegOhms Min.  
CONTACT RESISTANCE: 10 MilliOhms Max.  
WORKING TEMPERATURE: -55° TO +125°C

191-YYY-113LYYY

- SERIES \_\_\_\_\_
- POSITIONS \_\_\_\_\_
- 009 \_\_\_\_\_
- 015 \_\_\_\_\_
- 025 \_\_\_\_\_
- 037 \_\_\_\_\_
- GENDER \_\_\_\_\_
- 1 = MALE \_\_\_\_\_
- TERMINATION \_\_\_\_\_
- 1 = SOLDER TAIL \_\_\_\_\_
- SHELL PLATING \_\_\_\_\_
- 3 = STEEL, NICKEL PLATED \_\_\_\_\_
- RoHS COMPLIANT (LOW TEMP. PROCESS) \_\_\_\_\_
- HARDWARE OPTIONS \_\_\_\_\_
- 00 = NO HARDWARE, 0.125 DIA. HOLE \_\_\_\_\_
- 55 = 4-40 INSERT \_\_\_\_\_
- 56 = 4-40 INSERT WITH BOARD LOCK \_\_\_\_\_
- 57 = 4-40 STANDOFF WITH BOARD LOCK \_\_\_\_\_
- 59 = 4-40 STANDOFF \_\_\_\_\_
- PLATING OPTIONS \_\_\_\_\_
- 1 = GOLD FLASH \_\_\_\_\_
- 2 = 30 MICRO-INCH GOLD \_\_\_\_\_

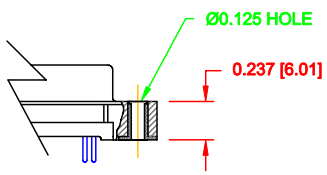
DO NOT SCALE FROM DRAWING

	THESE DRAWINGS AND SPECIFICATIONS ARE THE PROPERTY OF NorComp AND SHALL NOT BE REPRODUCED, COPIED OR USED AS THE BASIS FOR THE MANUFACTURE OF SALE OF APPARATUS WITHOUT WRITTEN PERMISSION.		DRAWN: <b>PAM JENKINS</b>	DATE: <b>8-22-05</b>
			CHECKED:	DATE:
<b>NorComp</b>	SCALE: 1 : 1	SHEET 1	OF 2	REV 3
	DWG NO. <b>191-YYY-113LYYY</b>			

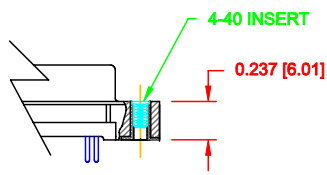
RoHS COMPLIANT

DESCRIPTION: 191 SERIES HARDWARE OPTIONS

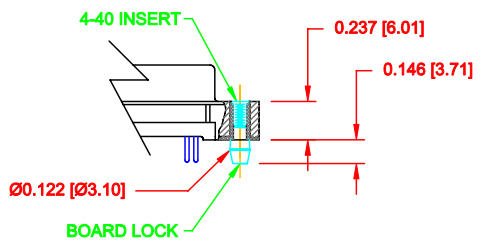
00 = .125 DIA. HOLE



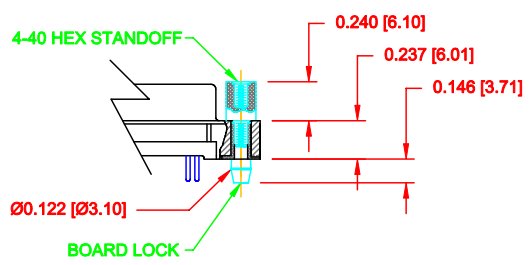
55 = 4-40 INSERT



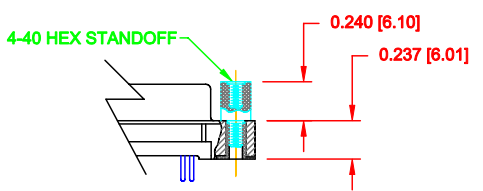
56 = 4-40 INSERT WITH BOARD LOCK



57 = 4-40 STANDOFF WITH BOARD LOCKS




59 = 4-40 STANDOFF



DO NOT SCALE FROM DRAWING

RoHS COMPLIANT

	THESE DRAWINGS AND SPECIFICATIONS ARE THE PROPERTY OF NorComp AND SHALL NOT BE REPRODUCED, COPIED OR USED AS THE BASIS FOR THE MANUFACTURE OF SALE OF APPARATUS WITHOUT WRITTEN PERMISSION.		DRAWN: <b>PAM JENKINS</b>	DATE: <b>8-22-05</b>
			CHECKED:	DATE:
<b>NorComp</b>		SCALE: 1 : 1	SHEET 2	OF 2
		DWG NO. <b>191-YYY-113LYYY</b>		