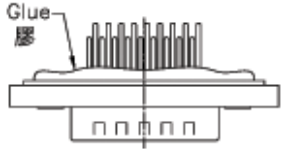
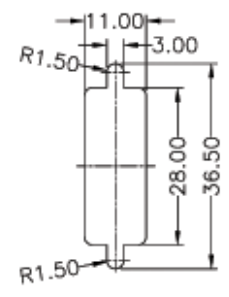
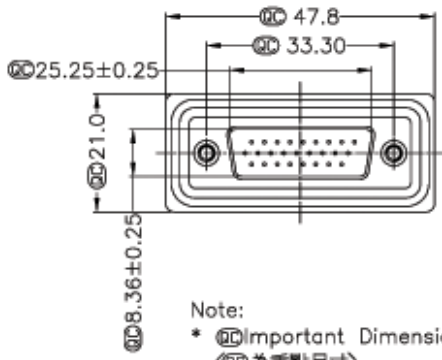
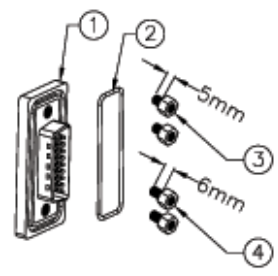


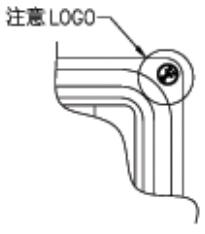
REV.	CON. NO.	DATE	BY	DESCRIPTION



Screw L=5.0 For Panel Thickness Under 1.2mm
適用板厚為 1.2mm 以下
Screw L=6.0 For Panel Thickness Between 1.2~2.0mm
適用板厚為 1.2~2.0mm



Recommended Panel Cut-Out
建議挖孔尺寸



- Note:
- * ϕ Important Dimension. (ϕ 為重點尺寸)
 - * Waterproof Rate : IP67
 - * Connector: Black, Nylon+GF
 - * Pin: Copper Alloy, Gold Plated
 - * Do Mating Test After Glued
點膠後, 須作對插測試
 - * 注意 LOGO 為 ϕ

UNIT:mm	TRIPLE	D-SUB,HD,HD-26PMMP	
TOLERANCE	SCALE	SHEET	1 OF 1
JX ±0.25	Free	REV.	01
JXX ±0.1	SIZE	A4	① inspection item
JXXX ±0.05			
ANGLES ±1°			



ITEM NO	A-HDS-26-AA-WP	DRAWN BY	Gao Ling	DATE	2006/05/06
DWG NO	A-HDS-26-AA-WP	CHECKED BY	Robert Hsu	DATE	2006/05/30
		APPROVED BY	Max	DATE	2006/06/02

THIS INFORMATION IS CONFIDENTIAL AND IS PROVIDED TO YOU ONLY UNDER THE CONDITION THAT YOU WILL NOT DISCLOSE IT TO ANY OTHER PERSONNEL WITHOUT AUTHORIZATION FROM LITEK CORP.