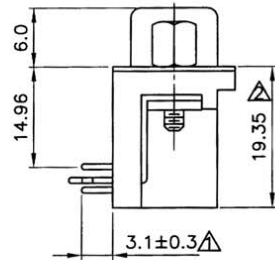
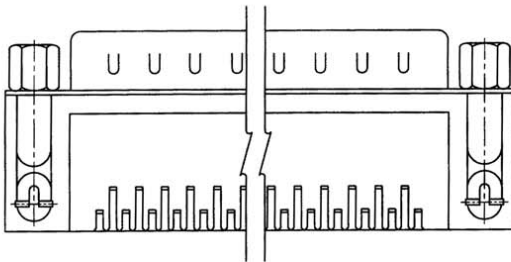


PARTS DIMENSION TABLE

parts no.	DIM. a	DIM. b	inner thread
C	4.8	11.8	4#40
E	5.8	12.0	4#40
G	4.8	11.8	M3
H	6.0	13.2	M2.6
I	5.8	11.8	M3
X	4.8	11.8	M2.6
Z	5.8	12.0	M2.6

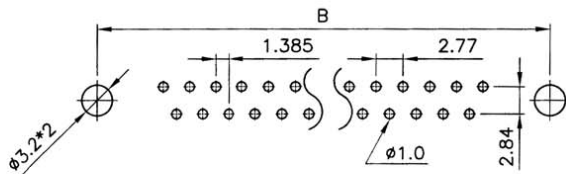


△ SPECIFICATION MATERIAL

Insulator: Thermal Plastic UL94V-0
 Contacts: Copper Alloy
 Shell: Steel
 Rivet, Boardlock: Copper alloy
CONTACT PLATING
 Underplate: 50u" Nickel
 Contact Area: 1u"~30u" Selective Gold
 Solder Tails Area: 100u"~200u" Tin/Lead(Brighten Tin) or
 100u"~200u" Tin/Lead Free(Brighten Tin/Matte Tin)

ELECTRICAL

Operation Voltage: 250 VAC Max.
 Current Rating: 3 Amps Max.
 Contact Resistance: 15 mohms Max.
 Insulation Resistance: 3000 Mohms Min @ 500 VDC
 Dielectric Withstanding Voltage: 1000 VAC / Minute
 Operating Temperature: -55°C TO +105°C



RECOMMENDED P.C.B LAYOUT(TOP VIEW)
 TOLERANCES: ±0.05mm

ASSMANN
 Electronics, Inc.

1840 W. Drake Drive, Suite 101 - Tempe, AZ 85283
 Toll Free: 1-877-277-6266 Email: info@usa-assmann.com

THIS DRAWING IS UNPUBLISHED
 © Copyright 2008 by Assmann Electronic Components
 All International Rights Reserved



ITEM NO

ADS-XX-A-KG-TASB5-R

TITLE

D-SUB PCB RIGHT ANGLE MALE