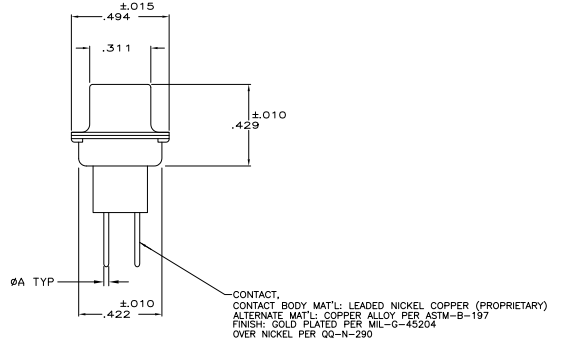
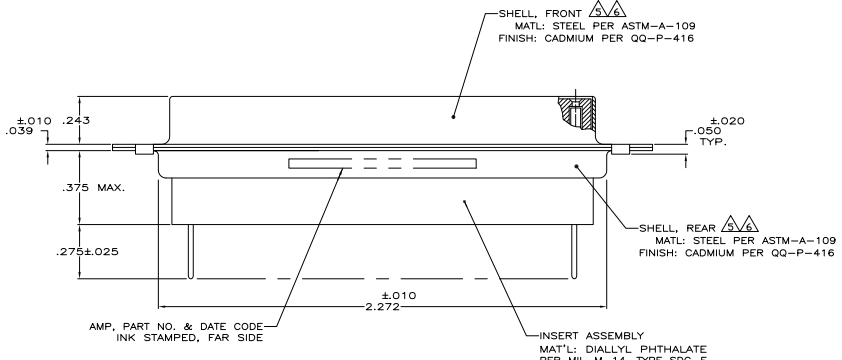
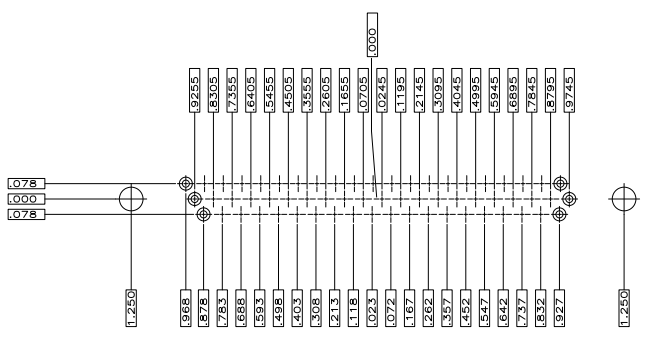
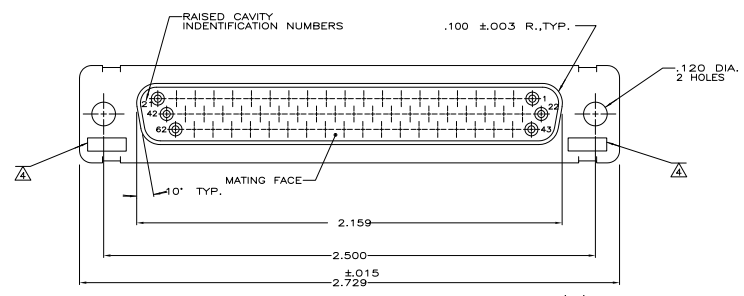


REV	DATE	DESCRIPTION	BY	APP'D
1				
2				
3				
4				
5				
6				
7				
8				



- .040 DIA HOLE IS RECOMMENDED FOR P.C. BOARD.
- CONNECTOR MATES WITH ANY AMP 62 POSN PLUG.
- REPLACEMENT SOCKET AMP# 207684-4.
- UL/CSA DESIGNATION STAMPED IN THIS AREA, OPTIONAL.
- FINISH: CADMIUM PER QQ-P-614.
- FINISH: ZINC PER ASTM-B-633 .000200-.000400 THK WITH SUPPLEMENTARY CHROMATE (C3+).

INSERT ASSEMBLY
 MATL: DIALLYL PHTHALATE
 PER MIL-M-14, TYPE SDG-F
 COLOR: BLUE
 OR POLYPHENYLENE SULFIDE (PPS)
 PER MIL-M-24519, TYPE GST-40F
 COLOR: BLACK

REVISIONS	DATE	BY	APP'D
1			
2			
3			
4			
5			
6			
7			
8			

PRELIMINARY - NOT RELEASED FOR PRODUCTION

THIS DRAWING IS A CONTROLLED DOCUMENT.		T. THOMAS 1-18-08		T. THOMAS	
DESIGNED BY: J. BALLEW II		1-28-08		T. THOMAS	
CHECKED BY: J. BALLEW II		1-28-08		T. THOMAS	
APPROVED BY: J. BALLEW II		1-28-08		T. THOMAS	
CUSTOMER DRAWING		A100779		Q=208875	