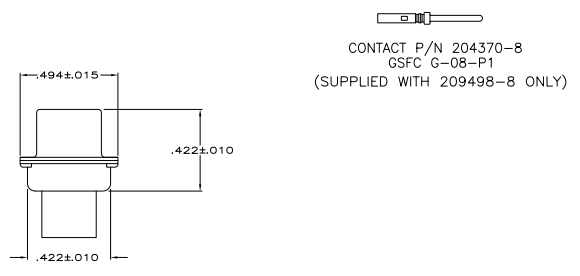
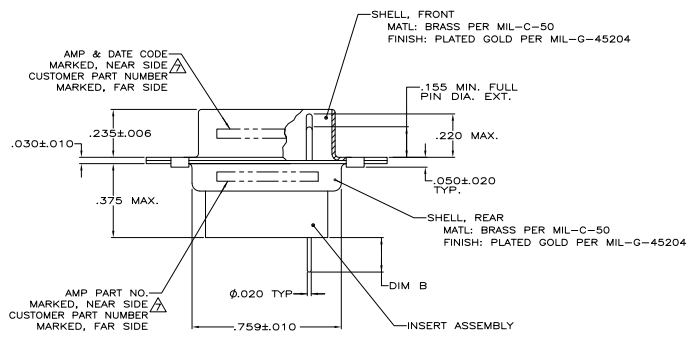


- THIS PLUG WILL MATE WITH ANY RECEPTACLE CONNECTOR WITH THE SAME INSERT ARRANGEMENT AS DEFINED BY MS18273-2.
  - MAXIMUM WIRE INSULATION USED WITH THIS RCPT. IS .054 DIA.
  - Be-Cu RETENTION CLIPS ARE INCLUDED IN INSERTS.
- ⚠ AMP PART NO. ONLY, STAMPED AS SHOWN.
  - ⚠ THESE CONNECTORS ARE QUALIFIED TO GODDARD SPACE FLIGHT CENTER SPECIFICATION S-311-P-4.
  - ⚠ UL/CSA DESIGNATION STAMPED IN THIS AREA, OPTIONAL.
  - ⚠ CUSTOMER PART NUMBER MAY BE SPLIT BETWEEN FRONT AND REAR SHELLS, SAME SIDE.
  - ⚠ 25 CONTACTS, AMP PART NUMBER 204370-B, SUPPLIED WITH EACH CONNECTOR.
  - ⚠ CONNECTOR LOADED WITH POSTED CONTACTS. INSPECTION REQUIREMENTS PER GENERAL ELECTRIC DOCUMENT 20025720.
  - ⚠ RESTRICTED TO CAE ELECTRONICS.
  - ⚠ CONNECTOR LOADED WITH POSTED CONTACTS.
  - ⚠ CONNECTOR LOADED WITH POSTED CONTACTS. INSPECTION REQUIREMENTS PER LOCKHEED-MARTIN DOCUMENT 20131204



MATL: POLYPHENYLENE SULFIDE (PPS) GST-40F PER MIL-M-24519 OR GLASS FILLED POLYESTER, TPES013G30 PER ASTM D5927 COLOR, BLACK

PRELIMINARY	⚠	.150±.025	.120	20131204P2015P	1-206498-4	1-206498-4
			.120	570566-7	1-206498-3	1-206498-3
	⚠	.175±.025	.120		1-206498-2	1-206498-2
	⚠		.120	311P407-1P-B-12	206498-4	1-206498-1
	⚠		.154	311P407-1P-B-15	206498-1	1-206498-0
	⚠	.150±.025	.120	2002570P2015P	206498-9	206498-9
	⚠		.120	3261113-7	206498-8	206498-8
			.154	1622251-003	206498-7	206498-7
OBSOLETE			.120	R4383P15P	206498-6	206498-6
			.120	R4383P15P-2	206498-5	206498-5
	⚠		.120	311P407-1P-B-12	206498-4	206498-4
				⚠	206498-3	206498-3
			.120	R9259P15P	206498-2	206498-2
	⚠		.154	311P407-1P-B-15	206498-1	206498-1
REMARKS		DIM B	DIA A	MARKED CUSTOMER P/N	MARKED AMP P/N	AMP P/N

THIS DRAWING IS A CONTROLLED DOCUMENT. SEE CALLOUTS.

DESIGNED BY: J. MILLER	DATE: 02/01/00	REVISED BY: J. MILLER	DATE: 02/01/00
CHECKED BY: J. MILLER	DATE: 02/01/00	APPROVED BY: J. MILLER	DATE: 02/01/00

Customer Drawing: 100779G-206498