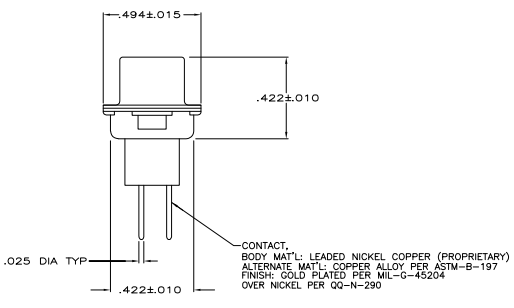
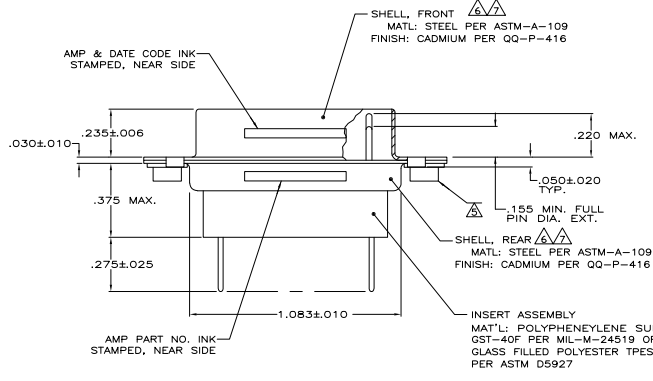
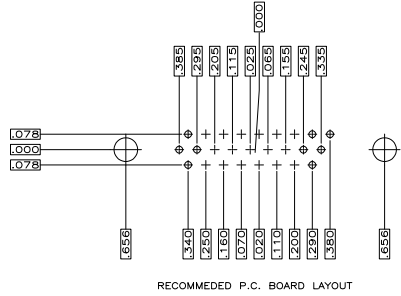
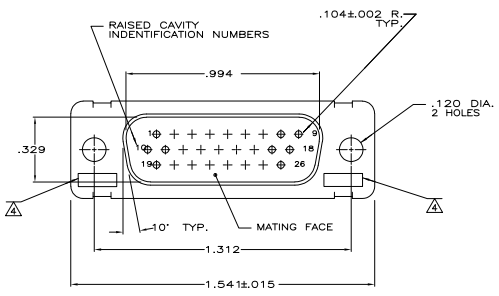


- .040 DIA HOLE IS RECOMMENDED FOR P.C. BOARD.
 - CONNECTOR MATES WITH ANY AMP 26 POSN RECEPTACLE.
 - REPLACEMENT PIN AMP# 207683-B.
- ▲ UL/CSA DESIGNATION STAMPED IN THIS AREA.
 - ▲ CLINCH NUT (2 EA) IS USED ON 208867-2 ONLY.
 - ▲ CADMIUM PER QQ-P-416.
 - ▲ FINISH: ZINC PER ASTM-B-633 .000200-.000400 THK WITH SUPPLEMENTARY CHROMATE (C-3+).



▲	5-208867-1
▲	208867-2
▲	208867-1

THIS DRAWING IS A CONTROLLED DOCUMENT.		APPROVED	DATE	REVISED
DESIGNED BY	DR. P. THOMAS 117-88	BY		
DESIGNED BY	J. BALLEW II 138-88	BY		
PROJECT FILE		DATE		
OPERATION FILE		DATE		
SIZE	A1	DATE	00779	REV
SIZE	00779	DATE	00779	REV
CUSTOMER DRAWING		DATE	00779	REV

AMP# 208867-1
 AMP# 208867-2
 AMP# 208867-1

REMARKS
 PART NO

THIS DRAWING IS A CONTROLLED DOCUMENT.
 AMP# 208867-1
 AMP# 208867-2
 AMP# 208867-1

AMP# 208867-1
 AMP# 208867-2
 AMP# 208867-1