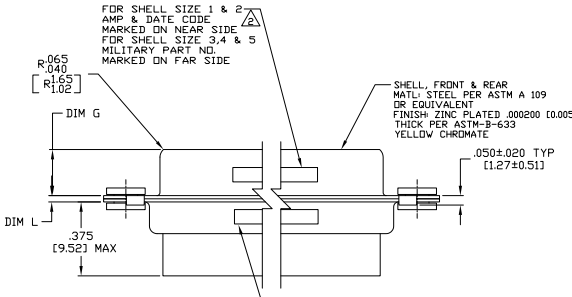
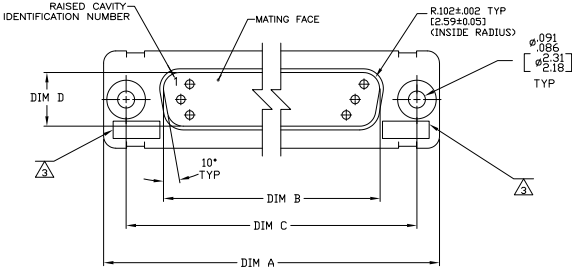
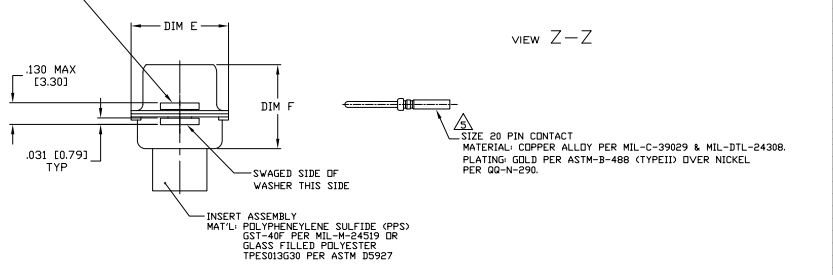
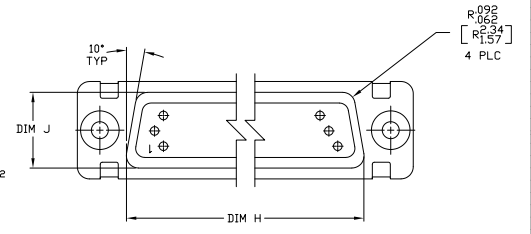


REV	DATE	DESCRIPTION	BY	CHK	APP
1	REV PER ESD-10-00110				



1. THE CONNECTOR DESCRIBED IN THIS DOCUMENT WILL MATE WITH ANY RECEPTACLE CONNECTOR WITH THE SAME INSERT ARRANGEMENT.
- △ MARKED WITH .047-.062 [1.19-1.57] HIGH CHARACTERS. FAR SIDE REFERS TO THE WIDE SIDE OF THE KEYSTONE. NEAR SIDE REFERS TO THE NARROW SIDE OF THE KEYSTONE. WHEN SPACE IS LIMITED MARKING CAN BE SPLIT BETWEEN FRONT AND REAR SHELL.
 - △ UL/CSA DESIGNATION MARKED IN THIS AREA (DOES NOT APPLY TO -6 OR -12).
 - △ CONNECTOR ASSEMBLY WITHOUT CONTACTS, MFG'S P/N 204370-2. MUST BE ORDERED SEPARATELY.
 - △ CONNECTOR ASSEMBLY SUPPLIED WITH CONTACTS, MFG'S P/N 204370-2. PACKAGED IN A SEPARATE CONTAINER. QTY = NO. OF POSN. (SEE TABLE).



REMARKS	MILITARY P/N ON PACKAGE	MILITARY P/N ON CONNECTOR	MARKED MFG'S PART NUMBER	L	J	H	G	F	E	D	C	B	A	INSERT ARRANGEMENT	NO OF POS	SHELL SIZE	PART NUMBER
△	M24308/4-312	M24308/4-312	1-1757825-2	.049 (1.24)	.666 (15.39)	2.312 (58.72)	2.36 (5.99)	.436 (11.07)	.683 (17.35)	.508 (12.90)	2.505 (63.63)	2.217 (56.31)	2.744 (69.70)	MS14004-1	104	6	1-1757825-2
△	M24308/4-311	M24308/4-311	1-1757825-1	.049 (1.24)	.666 (14.88)	2.292 (58.22)	2.24 (5.69)	.416 (10.57)	.653 (16.59)	.448 (11.39)	2.495 (63.37)	2.207 (55.86)	2.714 (68.94)	MS18277-2	78	5	1-1757825-1
△	M24308/4-310	M24308/4-310	1-1757825-0	.049 (1.24)	.666 (14.88)	2.292 (58.22)	2.24 (5.69)	.416 (10.57)	.653 (16.59)	.448 (11.39)	2.495 (63.37)	2.207 (55.86)	2.714 (68.94)	MS18276-2	62	4	1-1757825-0
△	M24308/4-309	M24308/4-309	1757825-9	.049 (1.24)	.666 (14.88)	2.292 (58.22)	2.24 (5.69)	.416 (10.57)	.653 (16.59)	.448 (11.39)	2.495 (63.37)	2.207 (55.86)	2.714 (68.94)	MS18275-2	44	3	1757825-9
△	M24308/4-308	M24308/4-308	1757825-8	.049 (1.24)	.666 (14.88)	2.292 (58.22)	2.24 (5.69)	.416 (10.57)	.653 (16.59)	.448 (11.39)	2.495 (63.37)	2.207 (55.86)	2.714 (68.94)	MS18274-2	26	2	1757825-8
△	M24308/4-307	M24308/4-307	1757825-7	.049 (1.24)	.666 (14.88)	2.292 (58.22)	2.24 (5.69)	.416 (10.57)	.653 (16.59)	.448 (11.39)	2.495 (63.37)	2.207 (55.86)	2.714 (68.94)	MS18273-2	15	1	1757825-7
△	M24308/4-334	M24308/4-312	1-1757825-2	.049 (1.24)	.666 (14.88)	2.292 (58.22)	2.24 (5.69)	.416 (10.57)	.653 (16.59)	.448 (11.39)	2.495 (63.37)	2.207 (55.86)	2.714 (68.94)	MS14004-1	104	6	1757825-6
△	M24308/4-333	M24308/4-311	1-1757825-1	.049 (1.24)	.666 (14.88)	2.292 (58.22)	2.24 (5.69)	.416 (10.57)	.653 (16.59)	.448 (11.39)	2.495 (63.37)	2.207 (55.86)	2.714 (68.94)	MS18277-2	78	5	1757825-5
△	M24308/4-332	M24308/4-310	1-1757825-0	.049 (1.24)	.666 (14.88)	2.292 (58.22)	2.24 (5.69)	.416 (10.57)	.653 (16.59)	.448 (11.39)	2.495 (63.37)	2.207 (55.86)	2.714 (68.94)	MS18276-2	62	4	1757825-4
△	M24308/4-331	M24308/4-309	1757825-9	.049 (1.24)	.666 (14.88)	2.292 (58.22)	2.24 (5.69)	.416 (10.57)	.653 (16.59)	.448 (11.39)	2.495 (63.37)	2.207 (55.86)	2.714 (68.94)	MS18275-2	44	3	1757825-3
△	M24308/4-330	M24308/4-308	1757825-8	.049 (1.24)	.666 (14.88)	2.292 (58.22)	2.24 (5.69)	.416 (10.57)	.653 (16.59)	.448 (11.39)	2.495 (63.37)	2.207 (55.86)	2.714 (68.94)	MS18274-2	26	2	1757825-2
△	M24308/4-329	M24308/4-307	1757825-7	.049 (1.24)	.666 (14.88)	2.292 (58.22)	2.24 (5.69)	.416 (10.57)	.653 (16.59)	.448 (11.39)	2.495 (63.37)	2.207 (55.86)	2.714 (68.94)	MS18273-2	15	1	1757825-1

THIS DRAWING IS A CONTROLLED DOCUMENT. THE ORIGINAL IS KEPT AT THE ELECTRONIC CORPORATION, HARRISBURG, PA 17105-3008.

DESIGNED BY: J. MILLER
 CHECKED BY: J. MILLER
 DATE: 8-4-02

DESCRIPTION: AMPULITE PLUG ASSY, SIZE 1 THRU 6 SERIES 90 WITH ZINC PLATING WITH FLOAT BUSHINGS.

SEE CALLOUTS

CUSTOMER DRAWING: A100779G=1757825

SCALE: 4:1