

4

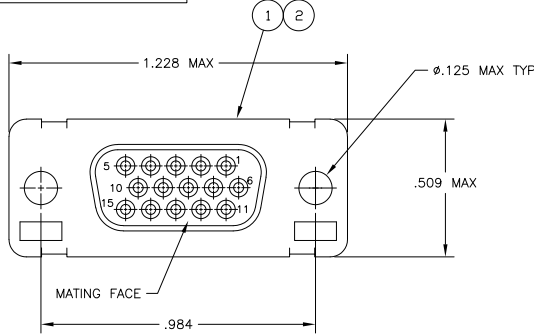
3

2

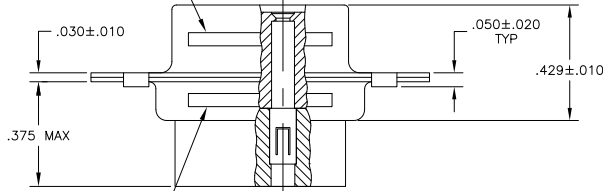
1

THIS DRAWING IS UNPUBLISHED. RELEASED FOR PUBLICATION. ALL RIGHTS RESERVED.

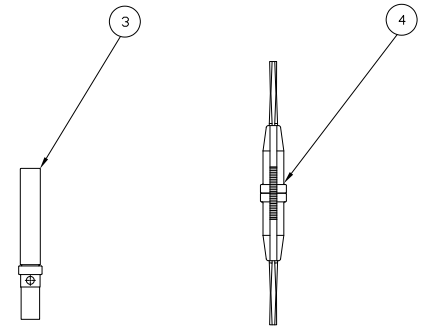
LOC		DIBT		REVISIONS			
DF	D5	P	LTR	DESCRIPTION	DATE	BY	APPD
		G1		REVISED PER ECO-11-005030	11MAR11	RK	HMR



MARK TE & DATE CODE PER 115-10002-2 NEAR SIDE



MARK MILITARY PART NO. FAR SIDE PER 115-10002-2 MARK TE PART NO, NEAR SIDE SEE TABLE



	OBSOLETE	M24308/6-17F	M24308/6-11F	91067-1	204351-1	204500-2	-	204512-6
SUPERSEDED BY 206497-4 & (15) 206071-1	M24308/6-11F	M24308/6-11F	-	-	204351-1	204500-2	-	204512-5
SUPERSEDED BY 206497-4 & 91067-1	-	M24308/6-11F	-	91067-1	-	204500-2	-	204512-4
	M24308/2-17F	M24308/2-11F	91067-1	204351-1	-	204500-1	204512-3	204512-3
	M24308/2-11F	M24308/2-11F	-	204351-1	-	204500-1	204512-2	204512-2
	-	M24308/2-11F	91067-1	-	-	204500-1	204512-1	204512-1
MILITARY P/N ON PACKAGE	MILITARY P/N ON CONNECTOR	④ INSERT/EXTRACT TOOL QTY = 1	③ SOCKET CONTACT QTY = 15	② RECEPTACLE ASSY QTY = 1	① RECEPTACLE ASSY QTY = 1			PART NUMBER

THIS DRAWING IS A CONTROLLED DOCUMENT.

APPROVED BY: P. YEAGER 1506008	DATE: 1606008
DESIGNED BY: R. LEASE 1606008	DATE: 1606008
CHECKED BY: R. LEASE 1606008	DATE: 1606008
APPROVED BY: R. LEASE 1606008	DATE: 1606008

TE Connectivity

AMPLIMITE KIT, HDD SERIES
RECEPTACLE, SIZE 1, 15 POSITION

SIZE: A2 CASE CODE: C-204512 DRAWING NO: 00779

RESTRICTED TO: G1

CUSTOMER DRAWING SCALE: 4:1 SHEET: 1 of 1 REV: G1