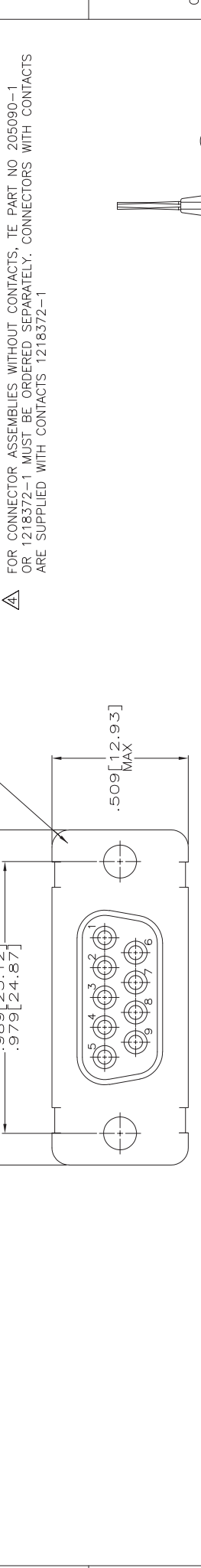


LOC	DIST	REV	DATE	UN	APP
DF	DO	H	12MAR09	PY	RL
DESCRIPTION		REV PER ECO-09-001334			

REVISIONS

△ SUPERCEDED BY 205161-1 AND 91067-2.
 △ SUPERCEDED BY 207253-2 AND (9) 206793-1.
 △ OBSOLETE.
 △ FOR CONNECTOR ASSEMBLIES WITHOUT CONTACTS, TE PART NO 205090-1 OR 1218372-1 MUST BE ORDERED SEPARATELY. CONNECTORS WITH CONTACTS ARE SUPPLIED WITH CONTACTS 1218372-1



91067-2	1218372-1	M24308/6-6F	M24308/6-1F	205555-4	205555-5
-	1218372-1	M24308/6-1F	M24308/6-1F	205555-4	205555-4
91067-2	1218372-1	M24308/2-6F	M24308/2-1F	205555-2	205555-3
-	1218372-1	M24308/2-1F	M24308/2-1F	205555-2	205555-2
91067-2	-	-	M24308/2-1F	205555-2	205555-1

REMARKS	INSERTION/EXTRACTION TOOL	△ CONTACT (QTY=9)	MILITARY P/N ON PACKAGE	MILITARY P/N ON CONNECTOR	AMP PART NUMBER ON CONNECTOR	PART NO
---------	---------------------------	-------------------	-------------------------	---------------------------	------------------------------	---------

THIS DRAWING IS A CONTROLLED DOCUMENT.		REV	11-03-94	BY	L. THOMPSON
DRAWN		CHK	01-16-95	APP	D. MANTIONE
DESIGNED		APP	01-16-95	NAME	D. MANTIONE
CHECKED		PRODUCT SPEC			
DIMENSIONS:					
INCHES:					
TOLERANCES UNLESS SPECIFIED:					
FRACTIONS					
DECIMALS					
ANGLES					
FINISH					
MATERIAL					
WEIGHT					
APPLICATION SPEC					
SIZE					
CASE CODE (DRAWING NO)					
RESTRICTED TO					
CUSTOMER DRAWING					
SCALE					
SHEET					
1 OF 1					
REV					