

- NOTES:
1. MATERIALS:
HOUSING - LIQUID CRYSTAL POLYMER (LCP)
HOUSING - GLASS FILLED, UL94V-0, BLACK
SIGNAL PIN AND SHIELD - COPPER ALLOY
 2. FINISHES:
CONTACT AREA - SELECTIVE GOLD (Au)
PCB TAILS - SELECTIVE TIN/LEAD (SPb) OR MATTE TIN (Sn)
 3. THIS PART CONFORMS TO MOLEX PRODUCT SPECIFICATION PS-74031-999.
 4. FOR MIXED CONTACT LENGTH CONTACT MOLEX FOR AVAILABILITY.
 5. FOR SPECIFIC MATERIAL NUMBERS AND MATING INFORMATION REFER TO SHEET 2.
 6. PACKAGE PER PK-74061-003.
 7. ASSEMBLY WILL BE MARKED WITH P/PN AND DATE CODE WITH LASER MARK ON SIDE OF HOUSING OR BY LABEL ON THE TUBE.

| INITIAL RELEASE ESD CONTROL 76135-001-001 CHKD: JONIAK 2008/12/07 APPR: J. JAKY 2008/12/07 REV | QUALITY SYMBOLS | GENERAL TOLERANCES (UNLESS SPECIFIED) | DIMENSION STYLE | SCALE | DESIGN UNITS | THIRD ANGLE PROJECTION | | | | | | | | | | | | | | | |
|---|----------------------------|--|---|-------|--------------|------------------------|------|------|---------------|------|------|----------------|------|------|---------------|------|------|---|--|---|-------------------|
| | $\nabla=0$ $\nabla=0.1$ | <table border="1"> <thead> <tr> <th></th> <th>MIN</th> <th>INCH</th> </tr> </thead> <tbody> <tr> <td>4 PLACES ±---</td> <td>±---</td> <td>±---</td> </tr> <tr> <td>3 PLACES ±---</td> <td>±---</td> <td>±---</td> </tr> <tr> <td>2 PLACES ±0.15</td> <td>±---</td> <td>±---</td> </tr> <tr> <td>1 PLACE ±0.25</td> <td>±---</td> <td>±---</td> </tr> </tbody> </table> ANGULAR ±1/2° | | MIN | INCH | 4 PLACES ±--- | ±--- | ±--- | 3 PLACES ±--- | ±--- | ±--- | 2 PLACES ±0.15 | ±--- | ±--- | 1 PLACE ±0.25 | ±--- | ±--- | DRAWN BY: JONIAK CHECKED BY: BINGHAM APPROVED BY: BINGHAM DATE: 2008/04/11 | DIMENSION STYLE: MM ONLY SCALE: 5:1 DESIGN UNITS: METRIC | TITLE: VHDM H-SERIES 8 ROW SIGNAL END BACKPLANE SALES DRAWING MOLEX INCORPORATED | SHEET NO.: 1 OF 2 |
| | | MIN | INCH | | | | | | | | | | | | | | | | | | |
| | 4 PLACES ±--- | ±--- | ±--- | | | | | | | | | | | | | | | | | | |
| 3 PLACES ±--- | ±--- | ±--- | | | | | | | | | | | | | | | | | | | |
| 2 PLACES ±0.15 | ±--- | ±--- | | | | | | | | | | | | | | | | | | | |
| 1 PLACE ±0.25 | ±--- | ±--- | | | | | | | | | | | | | | | | | | | |
| DRAFT WHERE APPLICABLE MUST REMAIN WITHIN DIMENSIONS | SEE PAGE 2 | MATERIAL NO.: DOCUMENT NO.: SD-76135-001 | THIS DRAWING CONTAINS INFORMATION THAT IS PROPRIETARY TO MOLEX INCORPORATED AND SHOULD NOT BE USED WITHOUT WRITTEN PERMISSION | | | | | | | | | | | | | | | | | | |

20 19 18 17 16 15 14 13 12 11 10 9 8 7 6 5 4 3 2 1

M/N 76135-()

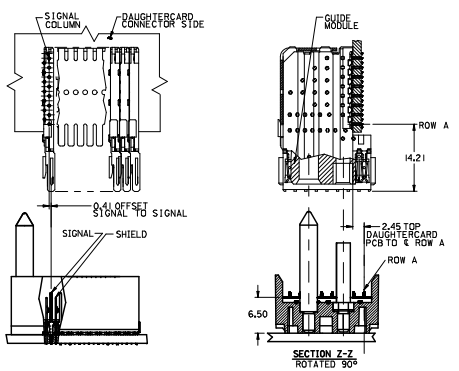
KEYING PIN ORIENTATION

| | | | | | | | | |
|-------|-------|-------|-------|-------|-------|-------|-------|-------|
| ---0* | ---1* | ---2* | ---3* | ---4* | ---5* | ---6* | ---7* | ---8* |
| O | A | B | C | D | E | F | G | H |

76135 - * * * * *

NUMBER OF COLUMNS PLATING:
 10 = 10 COLUMN TRIPLEAD
 15 = 15 COLUMN TRIPLEAD
 25 = 25 COLUMN TRIPLEAD
 30 = 30 COLUMN MATTE TN
 82 = 12 COLUMN MATTE TN
 85 = 25 COLUMN MATTE TN

CONTACT LOAD (PIN LENGTH)
 1 & 6 = 2.25
 2 & 5 = 2.25
 3 & 4 = 2.25
 7 & 8 = 2.15



| PART NUMBER | COLUMN | NUMBER OF SIGNAL | NUMBER OF PIN | NUMBER OF SHIELD | A | B | M | Au (um) THICKNESS | Sn (um) THICKNESS |
|-------------|--------|------------------|---------------|------------------|-------|------|------|-------------------|-------------------|
| 76135 -#0#1 | 10 | 80 | 10 | 27.00 | 18.00 | | | 0.76 | |
| 76135 -#0#6 | | | | | | | 4.75 | 1.27 | |
| 76135 -#5#1 | 25 | 200 | 25 | 57.00 | 48.00 | | | 0.76 | |
| 76135 -#5#6 | | | | | | | | 1.27 | |
| 76135 -#0#2 | 10 | 80 | 10 | 27.00 | 18.00 | | | 0.76 | |
| 76135 -#0#7 | | | | | | | 6.25 | 1.27 | |
| 76135 -#5#2 | 25 | 200 | 25 | 57.00 | 48.00 | | | 0.76 | |
| 76135 -#5#7 | | | | | | | | 1.27 | |
| 76135 -#0#3 | 10 | 80 | 10 | 27.00 | 18.00 | | | 0.76 | 0.76-1.52 |
| 76135 -#0#8 | | | | | | | 4.25 | 1.27 | |
| 76135 -#5#3 | 25 | 200 | 25 | 57.00 | 48.00 | | | 0.76 | |
| 76135 -#5#8 | | | | | | | | 1.27 | |
| 76135 -#0#4 | 10 | 80 | 10 | 27.00 | 18.00 | | | 0.76 | |
| 76135 -#0#9 | | | | | | | 5.15 | 1.27 | |
| 76135 -#5#4 | 25 | 200 | 25 | 57.00 | 48.00 | | | 0.76 | |
| 76135 -#5#9 | | | | | | | | 1.27 | |
| 76135 -#2#1 | 12 | 96 | 12 | 31.00 | 22.00 | 4.75 | | 0.76 | |
| 76135 -#2#6 | | | | | | | | 1.27 | |
| 76135 -#2#2 | 12 | 96 | 12 | 31.00 | 22.00 | 6.25 | | 0.76 | |
| 76135 -#2#7 | | | | | | | | 1.27 | |
| 76135 -#2#3 | 12 | 96 | 12 | 31.00 | 22.00 | 4.25 | | 0.76 | |
| 76135 -#2#8 | | | | | | | | 1.27 | |
| 76135 -#2#4 | 12 | 96 | 12 | 31.00 | 22.00 | 5.15 | | 0.76 | |
| 76135 -#2#9 | | | | | | | | 1.27 | |

INITIAL RELEASE: EN 14543-2768
 DRAWN BY: JONIAK 2008/04/11
 CHECKED BY: BINGHAM 2008/04/11
 APPROVED BY: BINGHAM 2008/04/11

QUALITY SYMBOLS: $\nabla=0$, $\nabla=0$

GENERAL TOLERANCES (UNLESS SPECIFIED):
 4 PLACES ±--- ±---
 3 PLACES ±--- ±---
 2 PLACES ±0.15 ±---
 1 PLACE ±0.25 ±---
 ANGULAR ±1/2°

DIMENSION STYLE: MM ONLY
 DRAWN BY: JONIAK 2008/04/11
 CHECKED BY: BINGHAM 2008/04/11
 APPROVED BY: BINGHAM 2008/04/11

SCALE: 1:1
 DESIGN UNITS: METRIC
 THIRD ANGLE PROJECTION

TITLE: VHDM H-SERIES 8 ROW SIGNAL END BACKPLANE SALES DRAWING

MATERIAL NO.: SEE CHART
 DOCUMENT NO.: SD-76135-001

SHEET NO.: 2 OF 2

THIS DRAWING CONTAINS INFORMATION THAT IS PROPRIETARY TO MOLEX INCORPORATED AND SHOULD NOT BE USED WITHOUT WRITTEN PERMISSION