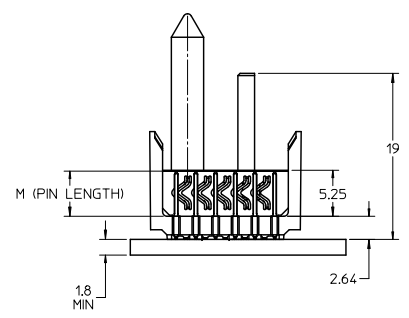
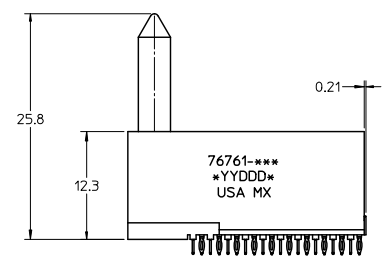
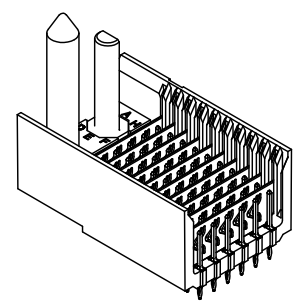
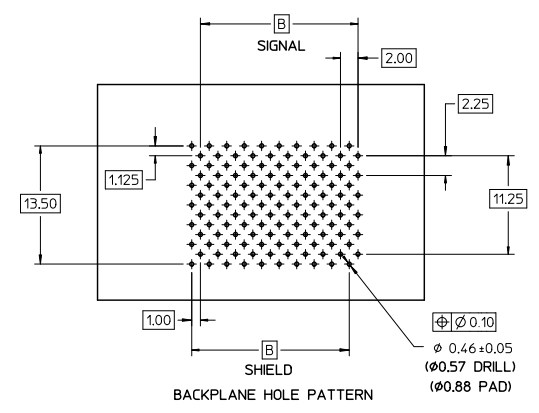
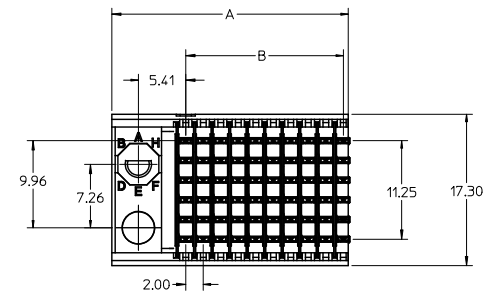


13 12 11 10 9 8 7 6 5 4 3 2 1

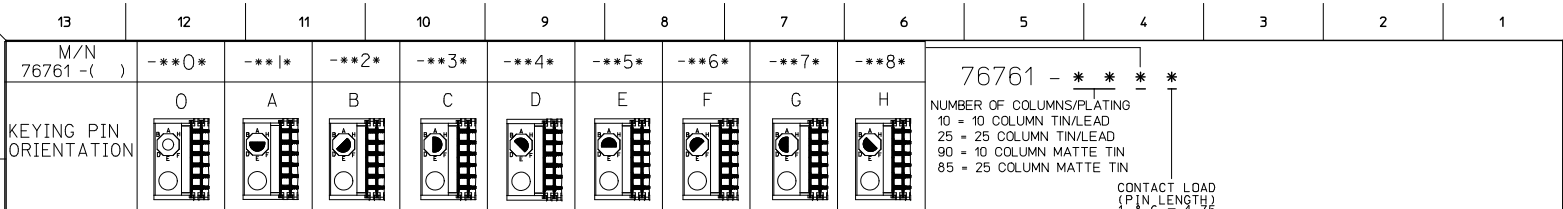


- NOTES:
1. MATERIALS:  
HOUSING - LIQUID CRYSTAL POLYMER (LCP)  
GLASS FILLED, UL94V-0, BLACK  
SIGNAL PIN AND SHIELD - COPPER ALLOY
  2. FINISHES:  
CONTACT AREA - SELECTIVE GOLD (Au)  
PCB TAILS - SELECTIVE TIN/LEAD (SnPb) OR MATTE TIN (Sn)
  3. THIS PART CONFORMS TO MOLEX PRODUCT SPECIFICATION PS-74031-999.
  4. FOR MIXED CONTACT LENGTH CONTACT MOLEX FOR AVAILABILITY.
  5. FOR SPECIFIC MATERIAL NUMBERS AND MATING INFORMATION REFER TO SHEET 2.
  6. PACKAGE PER PK-74058-003.
  7. ASSEMBLY WILL BE MARKED WITH P/N AND DATE CODE WITH LASER MARK ON SIDE OF HOUSING

UPDATE VIEWS - HS5 KEY SLOT EC NO. UCP2010-1574 DRAWN: JONIAK 2008/05/20 CHECKED: JONIAK 2008/07/09 APPR: SMILLER 2010/07/14	QUALITY SYMBOLS ∇=0 ∇=0 ∇=0	GENERAL TOLERANCES (UNLESS SPECIFIED)		DIMENSION STYLE MM ONLY		SCALE 2:1	DESIGN UNITS METRIC	THIRD ANGLE PROJECTION	
		4 PLACES ±--- ±--- 3 PLACES ±--- ±--- 2 PLACES ±0.15 ±--- 1 PLACE ±0.25 ±--- ANGULAR ±1/2°	mm INCH	DRAWN BY JONIAK	DATE 2008/07/09	TITLE VHDM H-SERIES 6 ROW BACKPLANE SIGNAL END		MOLEX INCORPORATED	
DRAFT WHERE APPLICABLE MUST REMAIN WITHIN DIMENSIONS	MATERIAL NO. SEE TABLE	APPROVED BY SMILLER		DATE 2010/03/09		DOCUMENT NO. SD-76761-001		SHEET NO. 1 OF 2	
THIS DRAWING CONTAINS INFORMATION THAT IS PROPRIETARY TO MOLEX INCORPORATED AND SHOULD NOT BE USED WITHOUT WRITTEN PERMISSION									

Id\_frame\_C.P.A.M.T  
Rev. F 2009/06/18

12 11 10 9 8 7 6 5 4 3 2 1



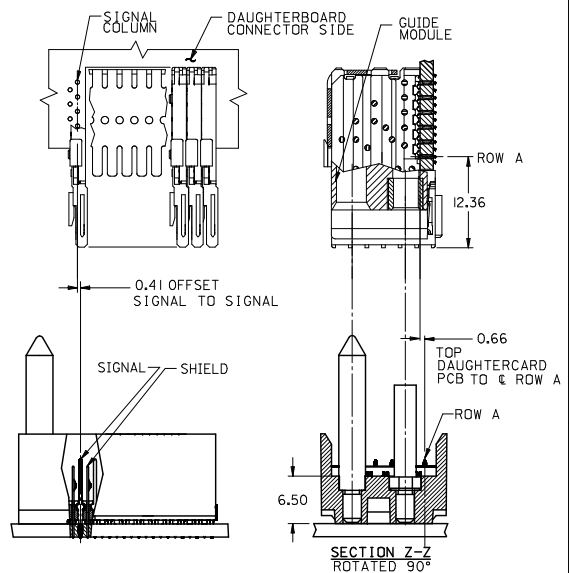
PART NUMBER	COLUMN	NUMBER OF SIGNAL PIN	NUMBER OF SHIELD	A	B	M	Au (um) THICKNESS
76761-1001	10	60	10	20.00	18.00		0.76
76761-1006						4.75	1.27
76761-2501	25	150	25	50.00	48.00		0.76
76761-2506							1.27
76761-1002	10	60	10	20.00	18.00		0.76
76761-1007						6.25	1.27
76761-2502	25	150	25	50.00	48.00		0.76
76761-2507							1.27
76761-1003	10	60	10	20.00	18.00		0.76
76761-1008						4.25	1.27
76761-2503	25	150	25	50.00	48.00		0.76
76761-2508							1.27
76761-1004	10	60	10	20.00	18.00		0.76
76761-1009						5.15	1.27
76761-2504	25	150	25	50.00	48.00		0.76
76761-2509							1.27

TIN/LEAD CHART

PART NUMBER	COLUMN	NUMBER OF SIGNAL PIN	NUMBER OF SHIELD	A	B	M	Au (um) THICKNESS
76761-9001	10	60	10	20.00	18.00		0.76
76761-9006						4.75	1.27
76761-8501	25	150	25	50.00	48.00		0.76
76761-8506							1.27
76761-9002	10	60	10	20.00	18.00		0.76
76761-9007						6.25	1.27
76761-8502	25	150	25	50.00	48.00		0.76
76761-8507							1.27
76761-9003	10	60	10	20.00	18.00		0.76
76761-9008						4.25	1.27
76761-8503	25	150	25	50.00	48.00		0.76
76761-8508							1.27
76761-9004	10	60	10	20.00	18.00		0.76
76761-9009						5.15	1.27
76761-8504	25	150	25	50.00	48.00		0.76
76761-8509							1.27

LEAD FREE CHART

CONTACT LOAD (PIN LENGTH)  
 1 = 4.75  
 2 = 6.25  
 3 = 4.25  
 4 = 5.15



CORRECT PINS IN TABLE EC NO. UCP2010-4574 DRAWN: JONIAK 2010/05/20 CHKD: JONIAK 2008/07/09 APPR: SMILLER 2010/07/14	QUALITY SYMBOLS ▽=0 ▽=0	GENERAL TOLERANCES (UNLESS SPECIFIED)		DIMENSION STYLE MM ONLY		SCALE 1:1	DESIGN UNITS METRIC	THIRD ANGLE PROJECTION
		4 PLACES ±--- ±---	3 PLACES ±--- ±---	2 PLACES ±0.15 ±---	1 PLACE ±0.25 ±---	ANGULAR ±1/2°	DRAWN BY JONIAK	DATE 2008/07/09
		DRAFT WHERE APPLICABLE MUST REMAIN WITHIN DIMENSIONS		SEE CHART		MATERIAL NO. SD-76761-001		SHEET NO. 2 OF 2
		THIS DRAWING CONTAINS INFORMATION THAT IS PROPRIETARY TO MOLEX INCORPORATED AND SHOULD NOT BE USED WITHOUT WRITTEN PERMISSION						