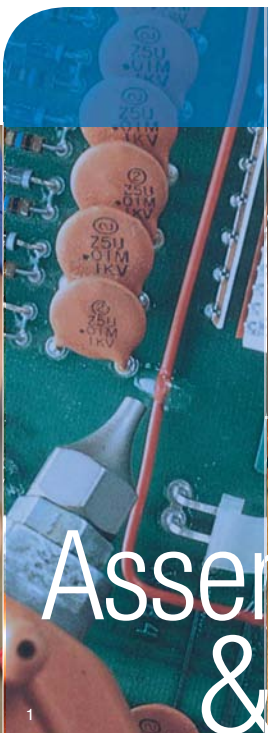


3M™ Scotch-Weld™ Hot Melt Bonding Systems



Assembly & packaging Reference guide

Speed and versatility
for applications success



Applications Success with 3M™ Scotch-Weld™ Hot Melt Adhesives

Do 3M™ Scotch-Weld™ Hot Melt Adhesives offer the best options for success with your assembly and/or closure application? Answers to the following questions can help you decide.

Would you like to improve your production speed and ease?

3M™ Scotch-Weld™ Hot Melt Adhesives liquefy when heated and quickly fill gaps and wet the bonding surface. Applied to only one surface, they cool, harden, and reach bond strength in seconds. You can move assemblies immediately and eliminate clamps, fixturing, and drying time and energy. Each adhesive is engineered for efficient application with an easy-to-use 3M portable applicator. Minimal operator training.

Would you like to improve appearance?

Unlike mechanical fasteners and sealing tapes, hot melt adhesive is virtually invisible between the mating surfaces.

What surfaces do you want to combine?

As you can see on pages 4 and 5, you can combine a wide variety of materials ranging from wood to corrugated cardboard, and even heat-sensitive foam.

How much strength do you need?

Select from a wide range of non-structural shear and peel strengths as shown on page 7. Structural strength has been defined as a minimum of 1,000 psi in overlap shear to permanently bond load-bearing components. Hot melt non-structural applications range from case sealing to bonding wood stiffeners to drawer bottoms, and securing components on a PC board.

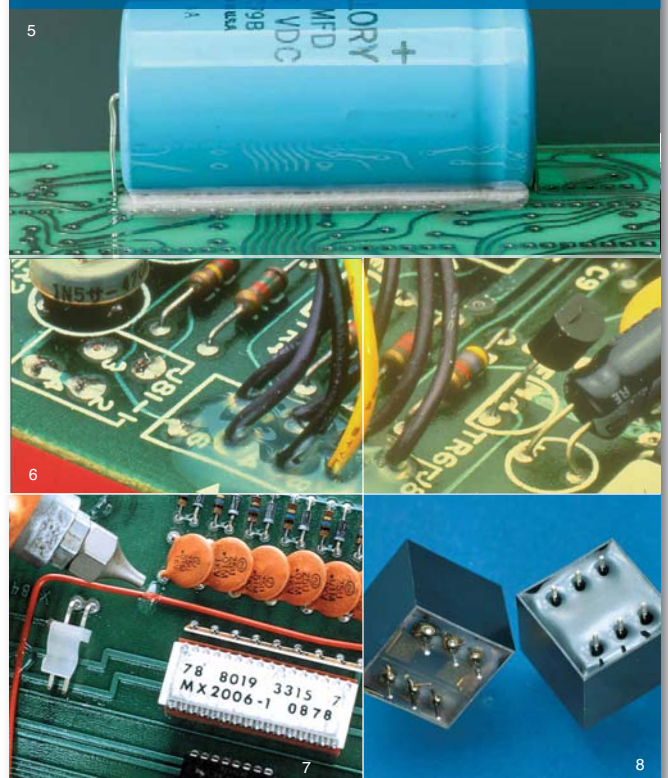
What is the temperature in the end use environment?

Hot melts are 100% solids thermoplastic resins that can re-melt after bonding if exposed to high enough temperature. As you can see on page 7, there are many options for selecting melt point and heat resistance for your specific application.

Do you need to reposition parts or delay assembly after adhesive application?

Open time or bonding range is the maximum time between applying adhesive and joining the surfaces. The more quickly you join surfaces, the better the wetting action and bond. With 3M™ Scotch-Weld™ Hot Melt Adhesives you have wide latitude in bonding range selection as shown on page 7.

Application Success:

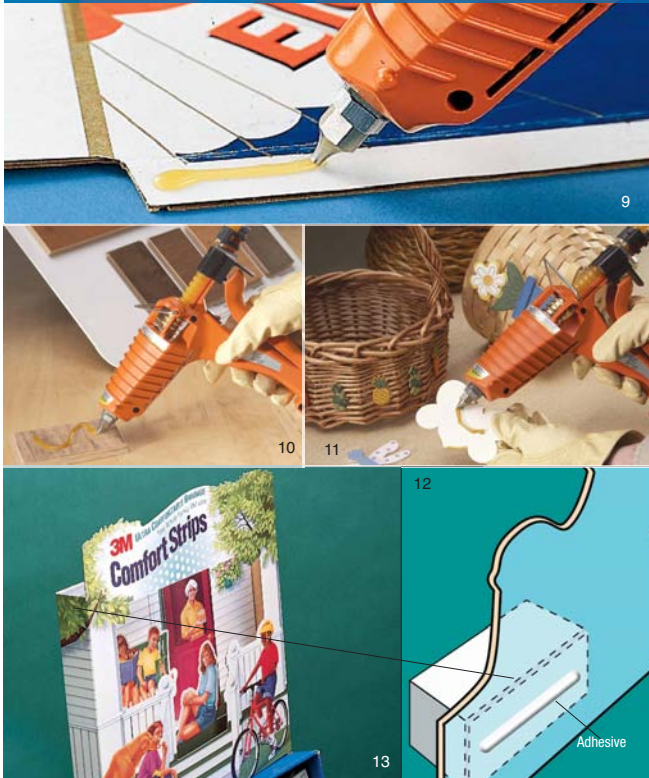


Electronics and Electrical

- Easily secure wires to resist strain and breakage
- Rigidize components on printed circuit boards to add stability during assembly, shipping and end use
- Quick setting for potting even at great depth
- Terminate coils
- Cable strain relief
- Bundle wires for convenient handling

Go to adhesives	3748VO: Light yellow, non-corrosive to copper, self extinguishing
	3779: Amber, high heat resistance, high strength
Alternatives	3748: Off-white, non-corrosive to copper
	3764: Clear, bonds HSE/LSE plastics
	3797: Off-white, good for potting

Application Success:



Point-of-Purchase, Displays, Trade Exhibits

- Bond foam spacers into 3-dimensional corrugated cardboard POP display
- Attach samples of wood flooring, laminates, foams, fabric, or other materials and small products to display board
- Attach decorations to baskets
- Assemble dried floral arrangements
- Bond polystyrene foam and other materials used in counter top displays, jewelry cases, and exhibitor booths

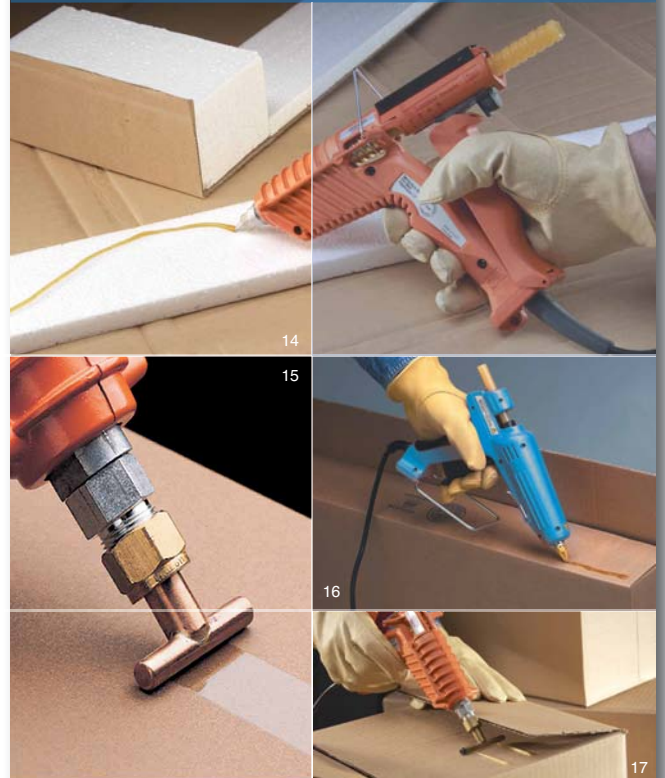
Go to adhesives

3762LM: Light amber, fast-setting, low melt for heat sensitive surfaces
 3792LM: Clear, multi-purpose low melt for heat sensitive surfaces

Alternatives

3748: Off-white, bonds polyolefins
 3755LM: Clear, delayed tack, applied as ribbon for paper, corrugated
 3764: Clear, bonds HSE/LSE plastics

Application Success:



Manual and Corrugated Carton Sealing

- Bond and seal any size and configuration of corrugated carton quickly and invisibly including RSCs, FOLs, and 5-panel folded
- Securely bond lightly waxed surfaces that may be difficult for tape to seal
- Attach inserts including heat-sensitive foam
- Self-contained portable applicator saves the cost of bulk equipment for recoupage, manual random size case sealing, and many contract packaging situations

Go to adhesives

3762: Economical, tan, fast-setting with "hot tack"
 3762LM: Light amber, low melt version of 3762

Alternatives

3738: Tan with high delivery rate, longer open time than 3762
 3750: Tan, low viscosity for high flow
 3764: Clear, stays flexible at low temp

Application Success:



18



19



21



20

Furniture and Woodworking

- Wood to wood assembly of non-structural components in home and office furniture and cabinetry
- “Third-hand” holding components while structural wood adhesive cures
- Bond fabric to wood for welting and gimping
- Secure drawer bottoms, guides, and stiffeners
- Attach upholstery to wood and plastic
- Assemble decorative crown moldings

Go to adhesives

- 3792: Clear, multi-purpose for wood, fabric, and upholstery
- 3792LM: Low melt version of 3792 for heat sensitive surfaces

Alternatives

- 3738: Tan, high delivery rate
- 3747: Tan, bonds variety of wood, plastics, and lightweight metal
- 3789: Brown, impact resistant

Application Success:



22



25



23



24

Product Assembly

- Bond metal or plastic nameplates to trophies
- Assemble or repair foundry sand cores
- Attach removable credit cards or samples to mailers
- Quick easy assembly of many materials in luggage and carrying cases
- Assemble many materials used in novelties, toys, games, and costumes
- Attach speaker fabric or protective metal grille

Go to adhesives

- 3764: Clear, bonds HSE/LSE plastics, flexible at low temp
- 3792LM: Clear, multi-purpose low melt for heat sensitive surfaces

Alternatives

- 3748: Off-white, resists thermal shock, bonds polyolefins
- 3796: Tan, hi-performance on thin metal
- 3798LM: Clear removable “gummy glue”

Substrate Combinations for Applications Success

Substrate	Wood		Thin Metal		Glass or ceramic		Vinyl		Leather		Polyolefin*	
Wood	3747 3789 3738	3776LM 3762LM 3792LM 3750LM	3747 3796	3776LM	3747 3764 3796	3792LM	3789 3779 3796	N/R	3789 3779 3796	N/R	3731 3748 3764 6111 ¹	3792LM
Thin Metal			3747 3796	3776LM	3747 3796	3776LM	3796	N/R	3796	N/R	3796	N/R
Glass or ceramic					3747 3764 3796	3792LM	3796	N/R	3796	N/R	3764 3748	3792LM
Vinyl							3789 3779 3796	N/R	3789 3779 3796	N/R	3796	N/R
Leather									3789 3779 3796	N/R	3796	N/R
Polyolefin*											3731 3748 3764 6111 ¹	3792LM
Plastic**												
Paper												
Uncoated cardboard/ chipboard												
Coated cardboard/ chipboard												
Fabric												
Rigid foam***												
Flexible foam												

Low melt adhesives

* E.g., polyethylene
 ** E.g., ABS, PVC, acrylic
 *** Beadboard/styrene

¹ 6111 is a family of products that includes 6111, 6111HT, and 6116.

² Removable

³ Must be sprayed on rigid foam to prevent cavitation.

	Plastic**		Paper		Uncoated cardboard/ chipboard		Coated cardboard/ chipboard		Fabric		Rigid foam***		Flexible foam	
	3764 3747 3748	3792LM 3776LM	3762 3792 6111 ¹	3762LM 3755LM 3792LM 3750LM	3762 3792 3738 3750	3762LM 3792LM 3755LM	3764 3792 3747	3792LM 3776LM	3738 3747 6111 ¹	3776LM 3792LM	6111 ^{1,3}	3792LM 3762LM 3755LM 3750LM	3738 3764 3747 6111 ¹	3792LM
	3747 3796	3776LM	3747 3796	3776LM	3747 3796	3776LM	3747 3796	3776LM	3747 3796	3776LM	N/R	3776LM	3747 3796	3776LM
	3764 3747 3792	3792LM	3747 3764	3792LM	3747 3764 3796	3792LM	3764 3747 3796	3792LM	3747 3764 3796	3792LM	N/R	3792LM	3747 3764 3796	3792LM
	3789 3796 3779	N/R	3789 3779 3796	N/R	3789 3779 3796	N/R	3789 3779 3796	N/R	3789 3779 3796	N/R	N/R	N/R	3789 3779 3796	N/R
	3789 3779 3796	N/R	3789 3779 3796	N/R	3789 3779 3796	N/R	3789 3779 3796	N/R	3789 3779 3796	N/R	N/R	N/R	3789 3779 3796	N/R
	3731 3764 3748 6111 ¹	3792LM	3731 3764 3748 6111 ¹	3792LM	3764 3748 6111 ¹	3792LM	3731 3764 3748 6111 ¹	3792LM	3731 3764 3748 6111 ¹	3792LM	6111 ^{1,3}	3792LM	3731 3748 3764 6111 ¹	3792LM
	3731 3764 3747 3748	3792LM 3776LM	3764 3747 3748	3792LM 3776LM	3764 3747 3748 6111 ¹	3792LM 3776LM	3764 3747 3748	3792LM 3776	3764 3792 3747	3792LM 3776LM	6111 ^{1,3}	3792LM 3776LM	3764 3747 3748	3792LM 3776LM
			3762 3793 6111 ¹	3762LM 3798LM ² 3755LM 3792LM 3750LM	3762 3792 3738 3750	3762LM 3792LM 3755LM 3750LM	3764 3747 3792	3792LM 3776LM	3792 3738 3764	3792LM 3755LM 3762LM 3750LM	6111 ^{1,3}	3755LM 3792LM 3762LM 3750LM	3762 3792 6111 ¹	3755LM 3762LM 3792LM 3750LM
					3762 3792 3738 3750	3762LM 3792LM 3755LM 3750LM	3764 3747 3792	3792LM 3776LM	3762 3792 3738 6111 ¹	3792LM 3762LM 3755LM 3750LM	6111 ^{1,3}	3762LM 3792LM 3776LM 3750LM	3762 3750 3738 3792	3762LM 3792LM 3755LM 3750LM
							3731 3764 3792 3747	3792LM 3776LM	3764 3792 3747	3792LM 3776LM	6111 ^{1,3}	3792LM 3776LM	3764 3792 3747	3792LM 3776LM
									3738 3747 6111 ¹	3776LM 3792LM	6111 ^{1,3}	3762LM 3792LM 3755LM 3750LM	3738 3747 6111 ¹	3776LM 3792LM
											6111 ^{1,3}	3792LM 3762LM 3755LM 3750LM	6111 ¹	3792LM 3762LM 3755LM 3750LM
													3738 3764 3747 6111 ¹	3792LM

Note: This technical information and data should be considered representative or typical only and should not be used for specification purposes.

Product Information

	Product (Color)	FDA Listed ¹	UL 94 Listing	Features Application Ideas
Low Melt Technology: Applied 250°-270°F (127°-132°C)	3750LM Tan	N	N/A	<ul style="list-style-type: none"> Excellent "hot tack", fast setting for corrugated, beadboard, repack, recoup Economical, general purpose • Use with AE II LT applicator only
	3755LM Clear	Y	N/A	<ul style="list-style-type: none"> "Delayed-tack" applied in thin-glue-line ribbon for paper, corrugated, chipboard, displays, exhibits Use with low melt applicator only
	3762LM* Lt. Amber	Y	N/A	<ul style="list-style-type: none"> Excellent "hot tack", fast setting for corrugated, beadboard, recoupage, repacking chipboard, wood Economical, general purpose • Use with low melt applicator only
	3776LM Tan	N/A	N/A	<ul style="list-style-type: none"> Bonds variety of plastics, woods and light-gauge metals Use with low melt applicator only
	3792LM* Clear	Y	V2	<ul style="list-style-type: none"> Clear, multi-purpose for wood, coated paper, polyolefins and other heat-sensitive materials P.O.P. displays • Use with low melt applicator only
	3798LM* Lt. yellow	Y	N/A	<ul style="list-style-type: none"> Removable "gummy glue" for many substrates Removes easily without residual tack • Use with low melt applicator only
Hot Melt Technology: Applied 350°-385°F (177°-196°C)	3731* Tan	N	N/A	<ul style="list-style-type: none"> High heat resistance Bonds plastics including polyethylene, polypropylene
	3738* Tan	Y	V2	<ul style="list-style-type: none"> High delivery rate and long bonding range • General purpose for foundry sand cores, wood bonding, corrugated, selected plastics and chipboard
	3747 Tan	Y	N/A	<ul style="list-style-type: none"> General purpose for wide variety of plastics, wood and lightweight metals
	3748* Off-white	Y	V2	<ul style="list-style-type: none"> Good thermal shock resistance • Non-corrosive to copper for many electronic applications Bonds polyolefins
	3748 V0 Light Yellow	N	V0	<ul style="list-style-type: none"> Self-extinguishing version of 3748 Meets UL 1410 requirements
	3750 Tan	N	N/A	<ul style="list-style-type: none"> Low viscosity for high flow rate, increased production Good hot tack, quick grab for packaging and woodworking
	3750 Clear	N	N	<ul style="list-style-type: none"> Low viscosity for high flow rate, increased production Good hot tack, quick grab for packaging and woodworking
	3762 Tan	Y	V2	<ul style="list-style-type: none"> Excellent "hot tack", fast setting for corrugated, beadboard, recoupage, repacking chipboard, wood Economical, general purpose
	3764* Clear	Y	V2	<ul style="list-style-type: none"> Bonds variety of plastics including polycarbonate, polyethylene, and polypropylene Flexible at low temperatures
	3779* Amber	Y	V0	<ul style="list-style-type: none"> High heat resistance • High strength Good fuel and oil resistance • Electronics
	3789* Brown	Y	V2	<ul style="list-style-type: none"> High performance for plastics • Impact resistant Bonds vinyl and wood • Good fuel and oil resistance
	3792* Clear	Y	V2	<ul style="list-style-type: none"> Clear, multi-purpose for wood, corrugated, fabric, furniture, upholstery, novelties, and other lightweight materials
	3796 Lt. Tan	N	N/A	<ul style="list-style-type: none"> High performance for plastics and light-gauge metals
	3797 Off-white	Y	V2	<ul style="list-style-type: none"> High ball and ring • Low viscosity Good for electrical potting
Bulk Only	3794 Hi Tack PSA Lt. Tan	Y	N/A	<ul style="list-style-type: none"> Sprayable high tack PSA for bonding plastic, paper, metals, die-cut labels
	6111 Tan	N	N/A	<ul style="list-style-type: none"> Sprayable 100% solventless adhesive for most foams, fabrics, plastics, particle board, and thin metal
	6111 Green	N	N/A	<ul style="list-style-type: none"> Same as 6111 tan but green in color.
	6111HT Tan	N	N/A	<ul style="list-style-type: none"> Similar to 6111 but has higher heat resistance.
	6111HT Blue	N	N/A	<ul style="list-style-type: none"> Similar to 6111 but has higher heat resistance and blue in color.
6116 Off-White	N	N/A	<ul style="list-style-type: none"> Similar to 6111 but lower than normal viscosity and mainly used on fabrics. 	

* Also available in bulk. (1) Made from components listed as indirect food additives under FDA regulations for adhesives (21 CFR 175.105).

(2) Brookfield Thermosel Viscometer in Centipoise.

(3) ASTM E-28-99 (4) Temperature at which adhesive fails (5) On canvas (6) On Douglas Fir (7) 1/8" semicircular bead, Douglas Fir to Douglas Fir.

	Sizes	EC Temp Control Modules	Viscosity cps ²	Delivery Time (sec) for 1" x 3" Cartridge	Ball & Ring Melt Point ³ (°F/°C)	Heat Resistance ⁴ (°F/°C)	Peel Strength PIW ⁵ 72°F (22°C)	Shear Strength PSI ⁶ 72°F (22°C)	Open Time 1/8" Bead (sec) ⁷
	1/2" x 12"AE	N/A	4000 @250°F	45	200/95	128/54	6	475	25
	58" x 2"TC	N/A	13,000 @250°F	N/A	157/70	120/49	13	500	120
	58" x 8"Q 1" x 3"PG 58" x 2"TC 1/2" x 12"	1	4000 @250°F	45	205/96	130/54	6	480	25
	58" x 8"Q 1" x 3"PG 1/2" x 12"	1	8250 @250°F	47	184/84	140/60	9	600	40
	58" x 8"Q 1" x 3"PG 58" x 2"TC 1/2" x 12"	1	10,500 @250°F	57	178/81	140/60	13	350	40
	58" x 2"TC	N/A	9500 @250°F	N/A	191/88	120/49	N/A	N/A	30
	58" x 8"Q 1" x 3"PG	5	12,000 @375°F	N/A	315/157	265/130	22	490	30
	58" x 8"Q 1" x 3"PG 58" x 2"TC 1/2" x 12"AE	4	2875 @375°F	35	186/86	130/54	13	375	50
	58" x 8"Q 1" x 3"PG 58" x 2"TC 1/2" x 12"AE	4	4100 @375°F	45	220/104	145/63	20	430	45
	58" x 8"Q 1" x 3"PG 58" x 2"TC	4	5000 @375°F	65	292/144	175/79	18	250	45
	58" x 8"Q 1" x 3"PG 58" x 2"TC	4	5500 @375°F	65	305/152	175/79	15	275	30
	1/2" x 12"AE	N/A	1900 @375°F	30-40	200/93	125/52	6	500	N/A
	1/2" x 12"AE	N/A	4800 @375°F	35-45	178/81	135/57	12	250	N/A
	58" x 8"Q 1" x 3"PG 58" x 2"TC 1/2" x 12"AE	3	1870 @375°F	30	201/94	130/54	7	545	35
	58" x 8"Q 1" x 3"PG 58" x 2"TC 1/2" x 12"AE	4	6000 @375°F	55	190/88	140/60	14	390	40
	58" x 8"Q 1" x 3"PG 58" x 2"TC	5	7000 @375°F	75	325/163	300/149	18	700	25
	58" x 8"Q 1" x 3"PG	5	5200 @375°F	70	270/132	220/104	16	570	50
	58" x 8"Q 1" x 3"PG 58" x 2"TC 1/2" x 12"AE	4	5000 @375°F	45	179/81	140/60	13	250	50
	1" x 3"PG 58" x 2"TC	N/A	23,000 @375°F	120	240/116	200/93	29	550	40
	1" x 3"PG 58" x 2"TC	N/A	2650 @375°F	55	304/151	170/77	10	350	30
	2 lb. bricks	N/A	15,000 @325°F	N/A	224/107	120/49	16	N/A	> 60
	.75"x.75" chips	N/A	3,000-5,000 @375°F	N/A	284/140	145/63	34	N/A	1 surface 60 2 surface 360
	.75"x.75" chips	N/A	3,000-5,000 @375°F	N/A	284/140	145/63	34	N/A	1 surface 60 2 surface 360
	.75"x.75" chips	N/A	2,500-4,500 @375°F	N/A	224/107	175/79	26	N/A	1 surface 180 2 surface 480
	.75"x.75" chips	N/A	2,500-4,500 @375°F	N/A	224/107	175/79	26	N/A	1 surface 180 2 surface 480
	.75"x.75" chips	N/A	1,300 @375°F	N/A	199/93	160/69	20	N/A	1 surface 120 2 surface 300

N/A = Not available

Note: The technical information and data on these pages should be considered representative or typical only and should not be used for specification purposes.

Selecting a 3M™ Scotch-Weld™ Hot-Melt Applicator to fit your needs



A
3M™ Scotch-Weld™ Hot Melt Applicator LT.
Medium volume using low melt adhesive.
UPC# 021200-82245



B
3M™ Scotch-Weld™ Hot Melt Applicator LT
with Quadrack™ Converter. Medium volume using
low melt adhesive.
UPC# 021200-89447



C
3M™ Scotch-Weld™ Pneumatic Hot Melt
Applicator PG II LT with Speedloader. High volume
using low melt adhesive.
UPC# 021200-89395



D
3M™ Scotch-Weld™ Hot Melt Applicator AE II LT.
Low volume using low melt adhesive.
UPC# 051115-25567



E
3M™ Scotch-Weld™ Hot Melt Applicator TC.
Medium volume.
UPC# 021200-82244



F
3M™ Scotch-Weld™ Hot Melt Applicator TC
with Quadrack™ Converter. Medium volume.
UPC# 021200-89445



G
3M™ Scotch-Weld™ Pneumatic Hot Melt
Applicator PG II with Speedloader.
High volume.
UPC# 021200-22033



H
3M™ Scotch-Weld™ Hot Melt Applicator AE II.
Low volume.
UPC# 021200-96594



I
3M™ Scotch-Weld™
Hot Melt Applicator
EC. Medium
volume; variable
temperature control.
UPC# 021200-89519



J

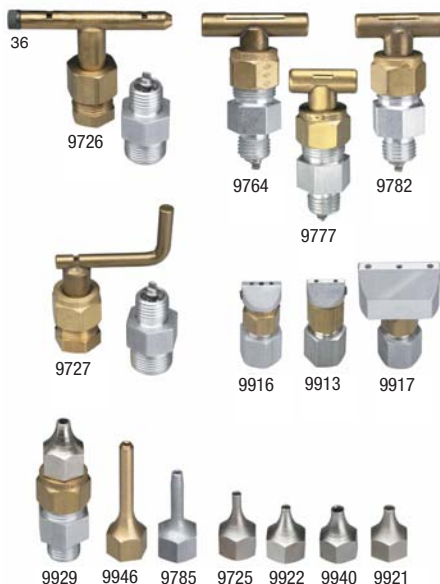
Lightweight, easy-to-use units... 3M's innovative melt-on-demand or progressive feed technology.

3M™ Scotch-Weld™ Hot Melt Applicators		Weight ⁽¹⁾	Output ⁽²⁾ lb/hr	Temperature ⁽³⁾	Power (120V)	Adhesive dia. x length, inches	Features	Warranty (Months)
Low Melt Applicators	A LT	10.0 oz.	2.6	265°F (129°C)	150W	5/8 x 2 TC	For use with low melt adhesives	12
	B LT with Quadrack Converter	13.8 oz.	2.6	265°F (129°C)	150W	5/8 x 8 Q		
	C Pneumatic PG II LT with Speedloader	4.3 lbs.	6.0	265°F (129°C)	500W	1 x 3 PG	Pneumatic high output for low melt adhesives	12
	D AE II LT	20.0 oz.	4.0	265°F (129°C)	100W	1/2 x 12 AE	All electric operation for low melt adhesives	6
Hot Melt Applicators	E TC	10.0 oz.	3.5	385°F (196°C)	150W	5/8 x 2 TC	Easy to use with standard melt adhesives	12
	F TC with Quadrack Converter	13.8 oz.	3.5	385°F (196°C)	150W	5/8 x 8 Q		
	G Pneumatic PG II with Speedloader	4.3 lbs.	7.5	385°F (196°C)	500W	1 x 3 PG	Pneumatic high output for standard melt adhesives	12
	H AE II	20.0 oz.	4.0	400°F (204°C)	100W	1/2 x 12 AE	All electric operation for standard melt adhesives	6
Variable	H EC	24.0 oz.	5.5	260°F-450°F (127°-232°C)	350W	5/8 x 8 Q	Temperature modules to operate with standard and low melt adhesives	12

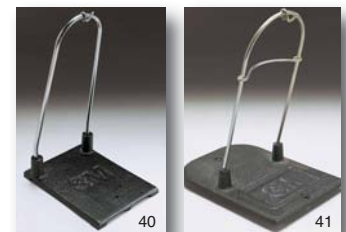
(1) Weight shown is for applicator only — does not include adhesive capacity. (2) Adhesive output will vary with conditions and the adhesive used. Values are approximate and are based on maximum steady-state flow. (3) Temperatures shown are nominal control values. Actual temperature will range slightly above and below this value.

Note: The technical information and data on these pages should be considered representative or typical only and should not be used for specification purposes.

Accessories to improve your productivity



Tip No.	Description
9726	"T" Tip (shown with valve and adapter) for all 3M™ Applicators
9764	3/4" Slotted Spreader (3755LM adhesive only)
9777	1/4" Slotted Spreader (3755LM adhesive only)
9782	1/2" Slotted Spreader (3755LM adhesive only)
9727	"L" Tip (shown with adapter and valve) for all 3M™ Applicators
9916	3 Hole Spreader
9913	2 Hole Spreader (1/4" hole span)
9917	3 Hole 1" Spreader for 3M™ Applicator II only
9929	High Viscosity Valve (TC, EC, PG-II)
9946	.072" Brass Extension for 3M™ Applicators PG II and PG II LT only
9785	.070" Tapered Aluminum Extension for all 3M™ Applicators
9725	Mini Extension Tip .072" Opening for all 3M™ Applicators
9922	.063" Fluted Tip
9940	.125" Fluted Tip
9921	.090" Fluted Tip



Heavy-Duty Benchstands provide added convenience.

Foot pedal, magazine feeder, and benchmount accessories can provide high capacity, hands-free operation for 3M™ Scotch-Weld™ PG II and 3M™ Scotch-Weld™ PG II LT.

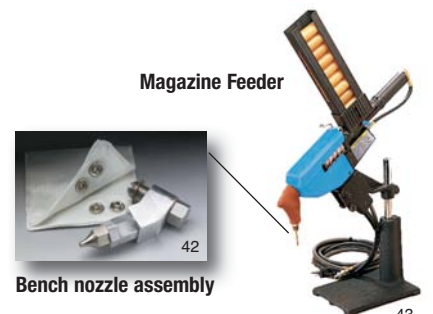
A general purpose tip (.090) is supplied with each 3M™ Scotch-Weld™ Applicator. To increase productivity, optional tips can provide multiple beads, flat ribbons, guided beads for carton sealing, and extended reach.



Increase loading capacity and ease of operation with Quadrack Converter and Palm Trigger.



Foot Pedal



Bench nozzle assembly

Benchmount

Ordering Information

3M™ Scotch-Weld™ Hot Melt Adhesives

	Product	Color	Size	Container Size	UPC	SN
Low Melt Technology: Applied 250°–270°F (127°–132°C)	3750LM	Tan	1/2"x12" AE	11 lbs	051115-31933	62-3758-9531-5
	3755LM	Clear	5/8" x 2" TC	11 lbs	021200-83535	62-3755-9830-7
	3762LM	Lt. Amber	1" x 3" PG	22 lbs	021200-49128	62-3720-9330-2
	3762LM	Lt. Amber	1/2" x 12" AE	11 lbs	051115-25579	62-3720-9531-5
	3762LM	Lt. Amber	5/8" x 2" TC	11 lbs	021200-49134	62-3720-9830-1
	3762LM	Lt. Amber	5/8" x 8" Q	11 lbs	021200-49125	62-3720-9132-2
	3762LMB	Lt. Amber	Pellets	22 lbs	021200-49130	62-3720-9335-1
	3762LMB*	Lt. Amber	Pellets	950 lbs	021200-49133	62-3720-9339-3
	3776LM*	Tan	1" x 3" PG	22 lbs	021200-89501	62-3733-9330-5
	3776LM	Tan	1/2" x 12" AE	11 lbs	021200-25583	62-3733-9531-8
	3776LM	Tan	5/8" x 8" Q	11 lbs	021200-89499	62-3733-9132-5
	3792LM	Clear	1" x 3" PG	22 lbs	021200-83491	62-3760-9330-8
	3792LM	Clear	1/2" x 12" AE	11 lbs	021200-25580	62-3760-9531-1
	3792LM	Clear	5/8" x 2" TC	11 lbs	021200-82456	62-3760-9830-7
	3792LM	Clear	5/8" x 8" Q	11 lbs	021200-82454	62-3760-9132-8
	3792LMB	Clear	Pellets	22 lbs	021200-43778	62-3760-9335-7
	3792LMB	Clear	Pellets	950 lbs	021200-49098	62-3760-9339-9
	3798LM	Lt. yellow	5/8" x 2" TC	11 lbs	021200-41604	62-3798-9830-7
	3798LMB*	Lt. yellow	Chips	11 lbs	021200-43825	62-3798-9335-7
	Hot Melt Technology: Applied 350°–385°F (177°–196°C)	3731	Tan	5/8" x 2" TC	11 lbs	021200-45271
3731*		Tan	1" x 3" PG	22 lbs	021200-49139	62-3731-9330-9
3731		Off-White	Chips	22 lbs	021200-49140	62-3731-9335-8
3738		Tan	1" x 3" PG	22 lbs	021200-82609	62-3738-9330-4
3738		Tan	1/2" x 12" AE	11 lbs	021200-82594	62-3738-9531-7
3738		Tan	5/8" x 2" TC	11 lbs	021200-82610	62-3738-9830-3
3738		Tan	5/8" x 8" Q	11 lbs	021200-65262	62-3738-9132-4
3738B		Tan	Pellets	22 lbs	021200-89305	62-3738-9335-3
3738B*		Tan	Pellets	950 lbs	021200-49094	62-3738-9339-5
3747		Tan	1" x 3" PG	22 lbs	021200-82221	62-3747-9330-5
3747		Tan	1/2" x 12" AE	11 lbs	021200-82220	62-3747-9531-8
3747		Tan	5/8" x 2" TC	11 lbs	021200-82560	62-3747-9830-4
3747		Tan	5/8" x 8" Q	11 lbs	021200-82561	62-3747-9132-5
3748		Off-White	1" x 3" PG	22 lbs	021200-82585	62-3748-9330-3
3748		Off-White	5/8" x 2" TC	11 lbs	021200-82584	62-3748-9830-2
3748		Off-White	5/8" x 8" Q	11 lbs	021200-76374	62-3748-9132-3
3748B		Off-White	Chips	22 lbs	021200-43752	62-3748-9335-2
3748		Black	5/8" x 8" Q	11 lbs	021200-45242	62-3724-9132-4
3748VO*		Lt. Yellow	1" x 3" PG	22 lbs	021200-85797	62-3768-9330-1
3748VO*		Lt. Yellow	5/8" x 2" TC	11 lbs	021200-85816	62-3768-9830-0
3748VO		Lt. Yellow	5/8" x 8" Q	11 lbs	021200-85795	62-3768-9132-1
3750		Tan	1/2" x 12" AE	11 lbs	021200-96269	62-3750-9531-2
3750		Clear	1/2" x 12" AE	11 lbs	021200-97353	62-3757-9531-7
3762		Tan	1" x 3" PG	22 lbs	021200-82614	62-3762-9330-4
3762		Tan	1/2" x 12" AE	11 lbs	021200-82596	62-3762-9531-7
3762		Tan	5/8" x 2" TC	11 lbs	021200-82615	62-3762-9830-3
3762		Tan	5/8" x 8" Q	11 lbs	021200-65261	62-3762-9132-4
3764		Clear	1" x 3" PG	22 lbs	021200-82598	62-3764-9330-0
3764		Clear	1/2" x 12" AE	11 lbs	021200-82597	62-3764-9531-3
3764		Clear	5/8" x 2" TC	11 lbs	021200-82599	62-3764-9830-9
3764		Clear	5/8" x 8" Q	11 lbs	021200-76054	62-3764-9132-0
3764B		Clear	Pellets	22 lbs	021200-87850	62-3764-9335-9
3764B	Clear	Pellets	950 lbs	021200-41526	62-3764-9337-5	
3779	Amber	1" x 3" PG	22 lbs	021200-82602	62-3779-9330-8	
3779	Amber	5/8" x 2" TC	11 lbs	021200-82603	62-3779-9830-7	
3779	Amber	5/8" x 8" Q	11 lbs	021200-85799	62-3779-9132-8	
3779B*	Amber	Pellets	22 lbs	021200-89307	62-3779-9335-7	
3789	Brown	1" x 3" PG	22 lbs	021200-82371	62-3789-9330-7	
3789	Brown	5/8" x 8" Q	11 lbs	021200-82369	62-3789-9132-7	
3789*	Brown	Pellets	22 lbs	021200-89308	62-3789-9335-6	
3792	Clear	1" x 3" PG	22 lbs	021200-82606	62-3792-9330-1	
3792	Clear	1/2" x 12" AE	11 lbs	021200-82583	62-3792-9531-4	

*Non-stocked items

3M™ Scotch-Weld™ Hot Melt Adhesives (continued)

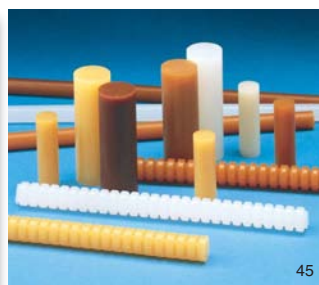
	Product	Color	Size	Container Size	UPC	SN
Hot Melt Technology: Applied 350°–385°F (177°–196°C)	3792	Clear	5/8" x 2" TC	11 lbs	021200-82589	62-3792-9830-0
	3792	Clear	5/8" x 8" Q	11 lbs	021200-65263	62-3792-9132-1
	3792B*	Clear	Pellets	22 lbs	021200-87960	62-3792-9335-0
	3792B	Clear	Pellets	950 lbs	021200-49097	62-3792-9339-2
	3794	Clear	2 lb Loaf	34 lbs	021200-43830	62-3794-6630-3
	3796	Lt. Tan	1" x 3" PG	22 lbs	021200-25352	62-3796-9339-6
	3796	Lt. Tan	5/8" x 2" TC	11 lbs	021200-25353	62-3796-9830-5
	3797	Off-White	1" x 3" PG	22 lbs	021200-82592	62-3797-9330-0
	3797	Off-White	5/8" x 2" TC	11 lbs	021200-82593	62-3797-9830-9
Bulk	6111B	Green	Chips	22 lbs	021200-96590	62-6112-9335-8
	6111B	Tan	Chips	22 lbs	021200-96589	62-6111-9335-0
	6111HTB	Tan	Chips	22 lbs	021200-43779	62-6113-9335-6
	6111HTB	Tan	Chips	850 lbs	021200-56567	62-6113-9339-8
	6111HTB	Blue	Chips	22 lbs	021200-49935	62-6115-9335-1
	6111HTB*	Blue	Chips	850 lbs	021200-56568	62-6115-9339-3
	6116	Off-White	Chips	22 lbs	021200-49924	62-6116-9335-9

*Non-stocked items

3M™ Scotch-Weld™ Hot Melt Applicators

Product	UPC	SN
LT	021200-82245	62-9281-9930-6
LT with Quadrack Converter and Palm Trigger	021200-89447	62-9281-9950-4
Pneumatic PG II LT with Speedloader and Cartridge Feed	021200-89395	62-9783-9630-7
Pneumatic PG II LT with Speedloader and Magazine Feed	021200-89396	62-9783-9830-3
AE II LT	051115-25567	62-9799-9930-7
TC	021200-82244	62-9990-9935-1
TC with Quadrack Converter and Palm Trigger	021200-89445	62-9990-9950-0
Pneumatic PG II with Speedloader and Cartridge Feed includes bench stand and tips 9921 and 9946	021200-22033	62-9938-9630-7
Pneumatic PG II Refurbished with Speedloader and Cartridge Feed*	021200-64787	62-9949-9931-6
Pneumatic PG II with Speedloader and Magazine Feed includes bench stand and tips 9921 and 9946	021200-22034	62-9938-9830-3
Pneumatic PG II Refurbished with Speedloader and Magazine Feed	021200-64788	62-9949-9932-4
AEII	021200-96594	62-9796-9930-3
EC	021200-89519	62-9680-9930-9

*Non-stocked items



3M™ Scotch-Weld™ Hot Melt Accessories

Product	Description	UPC	SN
9726	"T" Tip Assembly	021200-64542	62-9726-9930-0
9764	3/4" Slotted Spreader for use w/3755LM adhesive	021200-83526	62-9764-9930-1
9777	1/4" Slotted Spreader for use w/3755LM adhesive	021200-83732	62-9777-9930-3
9782	1/2" Slotted Spreader for use w/3755LM adhesive	021200-83529	62-9782-9930-3
9727	"L" Tip with Adapter	021200-64543	62-9727-9930-8
9916	3 Hole Spreader	021200-21836	62-9916-9930-7
9913	2 Hole Spreader	021200-21830	62-9913-9930-4
9917	3 hole 1" Spreader	021200-21837	62-9917-9930-5
9729	High Viscosity Valve (TC, EC, PG II)	021200-64840	62-9729-9930-4
9946	.072" Brass Extension (PG II, PG II LT)	021200-22040	62-9946-6980-2
9785	.070" Tapered Aluminum Extension (all applicators)	021200-82554	62-9785-9930-6
9725	.072" Mini Extension Tip	021200-21786	62-9725-9930-2
9922	.063" Fluted Tip	021200-21841	62-9922-0066-7
9940	.125" Fluted Tip	021200-22036	62-9940-6920-1
9921	.090" Fluted Tip	021200-21840	62-9921-0066-9
Heavy Duty Bench Stand for use with PG II & PG II LT	–	021200-22039	62-9945-9930-6
Heavy Duty bench Stand for use with EC, TC, & LT	–	021200-82418	62-9945-9935-5
Bench Mount	–	021200-82277	62-9276-9930-6
Bench Nozzle Assembly	–	021200-21713	62-9233-2781-1
Foot Pedal Assembly	–	021200-82278	62-9277-9930-4
TC & LT Palm Trigger	–	021200-82701	62-9761-9930-7
TC Quadrack Converter	–	021200-83536	62-9275-9935-7

Other 3M™ Adhesive Technologies

for improved design, productivity, and performance



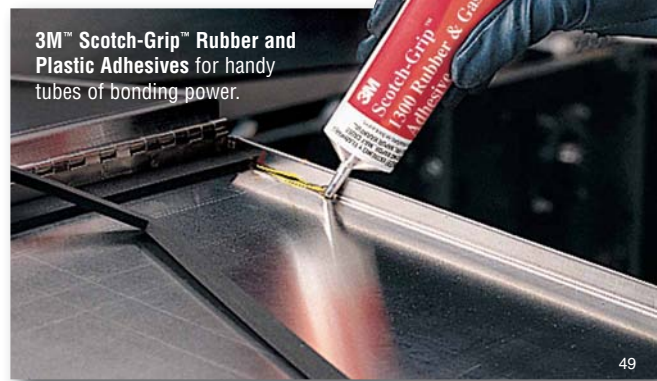
3M™ Scotch-Weld™ Structural Adhesives for the permanent bonding power of epoxies, urethanes, acrylics, and cyanoacrylates.

46

3M™ Scotch-Weld™ Polyurethane Reactive (PUR) Adhesive Systems for structural adhesive benefits with hot melt speed.



47



3M™ Scotch-Grip™ Rubber and Plastic Adhesives for handy tubes of bonding power.

49



3M™ Industrial Aerosol Adhesives for a fistful of bonding power with a wide variety of materials.

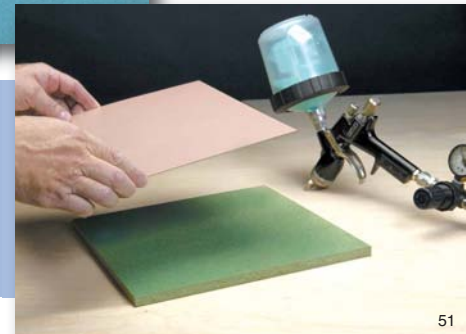
50



3M™ Scotch-Weld™ Cylinder Spray Adhesives for bulk productivity with aerosol convenience and portability.

48

3M™ Fastbond™ Water-based Adhesives for productivity, performance, profitability, and compliance.



51

Limited Product Warranty: 3M warrants all 3M™ Scotch-Weld™ Hot Melt Applicators for 6 months from the date of manufacture, that the 3M product will be free of defects in material and manufacture. 3M MAKES NO OTHER WARRANTIES, EXPRESS OR IMPLIED, INCLUDING BUT NOT LIMITED TO, ANY IMPLIED WARRANTY OF MERCHANTABILITY OR FITNESS FOR A PARTICULAR PURPOSE. This warranty does not cover damage resulting from the use or inability to use the 3M product due to misuse, workmanship in application, or application or storage not in accordance with 3M recommended procedures. **Important Notice:** User is responsible for determining whether the 3M product is fit for a particular purpose and suitable for user's method of application. Please remember that many factors can affect the use and performance of a 3M product in a particular application. The materials to be bonded with the product, the surface preparation of these materials, the product selected for use, the conditions in which the product is used, and the time and environmental conditions in which the product is expected to perform are among the many factors that can affect the use and performance of a 3M product. Given the variety of factors that can affect the use and performance of a 3M product, some of which are uniquely within the user's knowledge and control, it is essential that the user evaluate the 3M product to determine whether it is fit for a particular purpose and suitable for the user's method of application. **Limitation of Remedies and Liability:** If the 3M product is proved to be defective within the warranty period stated above, THE EXCLUSIVE REMEDY, AT 3M'S OPTION, SHALL BE TO REFUND THE PURCHASE PRICE OF OR TO REPAIR OR REPLACE THE DEFECTIVE 3M PRODUCT. 3M shall not otherwise be liable for loss or damages, whether direct, indirect, special, incidental, or consequential, regardless of the legal theory asserted, including negligence, warranty, or strict liability.



Industrial Adhesives and Tapes Division

900 Bush Avenue, Building 21-1W-10
St. Paul, MN 55144-1000
www.3M.com/adhesives

3M, Fastbond, Scotch-Grip, and Scotch-Weld are trademarks of 3M Company.

Printed in U.S.A.
© 3M 2008
78-6900-2947-1