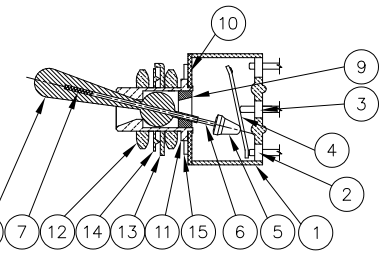
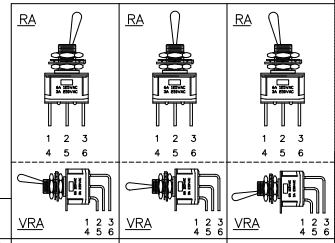


No.	Component name	Base material	Finish
1	Housing	Alloy, Green, UL94 V-0	
2	End terminal - gold over silver	silver clad copper alloy	50 microinches min. gold
3	Center terminal - gold over silver	silver clad copper alloy	50 microinches min. gold over 50 microinches min. nickel
4	Rocker contact - gold over silver	copper alloy	50 microinches min. gold
5	Actuator	phenolic resin, UL94 HB, black	
6	Plunger	stainless steel	
7	Spring	music wire	
8	Toggle	brass	200 microinches min. bright nickel, electrodeposited
9	Retainer	Polyamide, UL94 HB, black	
10	Frame	cold rolled steel	200 microinches min. bright nickel, electrodeposited
11	Bushing, MTM	brass	100 microinches min. nickel over 10 microinches min. copper
12	Bushing, MTA	zinc	100 microinches min. nickel electrodeposited over
13	Mounting nuts (2)	brass	200 microinches min. bright nickel, electrodeposited
14	Locating ring	cold rolled steel	200 microinches min. bright nickel, electrodeposited
15	Support bracket - newly tooling switches	steel	200 microinches min. lead free tin over 120 microinches min. copper

Specifications - see note 3	Parameter	Maintained	Momentary
Current rating UL & CSA	RA @ 125 VAC (resistive)		
	SA @ 250 VAC (resistive)		
	MA @ 28 VDC (resistive)		
Termination resistance - gold over silver	20 milliohms max @ 1A, 2-4 VDC		
Insulation resistance	1,000 megohms min.		
Withstanding voltage	1,000 VAC		
Travel	24 +/- .6 degrees		
Actuation force	.05 to 1.5 kgf		
Operating temperature	-20C to +85C		
Storage temperature	-40C to +85C		
Contact timing	break before make		
Terminal seal	epoxy		



NOT TO SCALE

- NOTES:
- TERMINAL NUMBERS ARE FOR REFERENCE ONLY AND DO NOT APPEAR ON THE SWITCHES.
 - EACH MTA SWITCH SUPPLIED WITH THE FOLLOWING MOUNTING HARDWARE:
 - (1) INTERNAL TOOTH LOCKWASHER
 - (2) 1/4-40 UNS-2B HEX NUTS
 - (3) LOCATING RING
 - SWITCHES TESTED TO AND MEET THE REQUIREMENTS OF UL 61058-1A. SWITCHES FOR APPLIANCES, SWITCHES WILL ALSO BE TESTED TO AND MEET THE REQUIREMENTS OF TYCO 102-2469 REV 0, MINIATURE SWITCH QUALIFICATION REQUIREMENTS.
 - SWITCHES ARE PENDING UL RECOGNITION TO US AND CANADIAN STANDARDS.
 - SWITCHES ARE MARKED PER TYCO SPEC 202-37 WITH ALSO BENEATH TYCO AS SHOWN.
 - ALL MATERIALS AND FINISHES SHALL COMPLY WITH EU DIRECTIVE 2002/95/EC OF 27JAN2003 (ROHS).

Tyco Part Number	Alco PIN	Poles	Throws	Function	Terminal	Plating	Toggle/Bushing Option	RA	VRA	MTA
3-1571922-5	MTM8206RRA04	2	2	ON (ON)	VRA	gold over silver	M (unthreaded)	2-1, 5-4	---	2-3, 5-6
3-1571922-4	MTM8206RRA04	2	2	ON (ON)	RA	gold over silver	M (unthreaded)	2-1, 5-4	---	2-3, 5-6
3-1571922-3	MTM8206RRA04	2	2	ON OFF ON	VRA	gold over silver	M (unthreaded)	2-1, 5-4	Off	2-3, 5-6
3-1571922-2	MTM8206RRA04	2	2	ON OFF ON	RA	gold over silver	M (unthreaded)	2-1, 5-4	Off	2-3, 5-6
3-1571922-1	MTM8206RRA04	2	2	ON ON	VRA	gold over silver	M (unthreaded)	2-1, 5-4	---	2-3, 5-6
3-1571922-0	MTM8206RRA04	2	2	ON ON	RA	gold over silver	M (unthreaded)	2-1, 5-4	---	2-3, 5-6
OBSOLETE	2-1571922-9	MTM8206KRA04	2	1	ON OFF	VRA	gold over silver	M (unthreaded)	2-1, 5-4	---
OBSOLETE	2-1571922-8	MTM8206KRA04	2	1	ON OFF	RA	gold over silver	M (unthreaded)	2-1, 5-4	---
OBSOLETE	2-1571922-7	MTM8106RRA04	1	2	ON (ON)	RA	gold over silver	M (unthreaded)	2-1	---
OBSOLETE	2-1571922-6	MTM8106RRA04	1	2	ON OFF ON	VRA	gold over silver	M (unthreaded)	2-1	Off
OBSOLETE	2-1571922-5	MTM8106RRA04	1	2	ON OFF ON	RA	gold over silver	M (unthreaded)	2-1	Off
OBSOLETE	2-1571922-4	MTM8106RRA04	1	2	ON ON	VRA	gold over silver	M (unthreaded)	2-1	---
OBSOLETE	2-1571922-3	MTM8106RRA04	1	2	ON ON	RA	gold over silver	M (unthreaded)	2-1	---
OBSOLETE	2-1571922-2	MTM8106RRA04	1	2	ON ON	RA	gold	M (unthreaded)	2-1	---
OBSOLETE	2-1571922-1	MTM8106RRA04	1	1	ON OFF	VRA	gold over silver	M (unthreaded)	2-1	---
OBSOLETE	2-1571922-0	MTM8106RRA04	1	1	ON OFF	RA	gold over silver	M (unthreaded)	2-1	---
OBSOLETE	1-1571922-9	MTA8206RRA04	2	2	ON (ON)	RA	gold over silver	A (threaded)	2-1, 5-4	---
OBSOLETE	1-1571922-8	MTA8206RRA04	2	2	ON OFF ON	VRA	gold over silver	A (threaded)	2-1, 5-4	Off
OBSOLETE	1-1571922-7	MTA8206RRA04	2	2	ON OFF ON	RA	gold over silver	A (threaded)	2-1, 5-4	Off
OBSOLETE	1-1571922-6	MTA8206RRA04	2	2	ON OFF ON	VRA	gold	A (threaded)	2-1, 5-4	Off
OBSOLETE	1-1571922-5	MTA8206RRA04	2	2	ON ON	VRA	gold over silver	A (threaded)	2-1, 5-4	---
OBSOLETE	1-1571922-4	MTA8206RRA04	2	2	ON ON	RA	gold over silver	A (threaded)	2-1, 5-4	---
OBSOLETE	1-1571922-3	MTA8206RRA04	2	1	ON OFF	VRA	gold over silver	A (threaded)	2-1, 5-4	---
OBSOLETE	1-1571922-2	MTA8206RRA04	2	1	ON OFF	RA	gold over silver	A (threaded)	2-1, 5-4	---
OBSOLETE	1-1571922-1	MTA8106RRA04	1	2	ON (ON)	VRA	gold over silver	A (threaded)	2-1	---
OBSOLETE	1-1571922-0	MTA8106RRA04	1	2	ON (ON)	RA	gold over silver	A (threaded)	2-1	---
OBSOLETE	1571922-9	MTA8106RRA04	1	2	ON OFF ON	VRA	gold over silver	A (threaded)	2-1	Off
OBSOLETE	1571922-8	MTA8106RRA04	1	2	ON OFF ON	RA	gold over silver	A (threaded)	2-1	Off
OBSOLETE	1571922-7	MTA8106RRA04	1	2	ON OFF ON	VRA	gold	A (threaded)	2-1	Off
OBSOLETE	1571922-6	MTA8106RRA04	1	2	ON OFF ON	RA	gold	A (threaded)	2-1	Off
OBSOLETE	1571922-5	MTA8106RRA04	1	2	ON ON	VRA	gold over silver	A (threaded)	2-1	---
OBSOLETE	1571922-4	MTA8106RRA04	1	2	ON ON	RA	gold over silver	A (threaded)	2-1	---
OBSOLETE	1571922-3	MTA8106RRA04	1	2	ON ON	VRA	gold	A (threaded)	2-1	---
OBSOLETE	1571922-2	MTA8106RRA04	1	1	ON OFF	VRA	gold over silver	A (threaded)	2-1	---
OBSOLETE	1571922-1	MTA8106RRA04	1	1	ON OFF	RA	gold over silver	A (threaded)	2-1	---

THIS DRAWING IS A CONTROLLED DOCUMENT.

REVISIONS

DATE

DESCRIPTION

BY

CHK

APP

TYCO ELECTRONICS CORPORATION

HARRISBURG, PA 17103-3608

ALCO SWITCH GREEN SERIES TOGGLE SWITCH

MTA/MTM RA & VRA

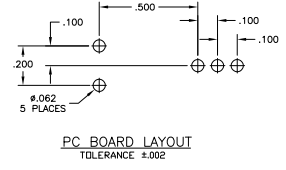
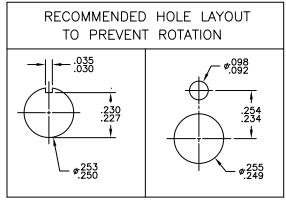
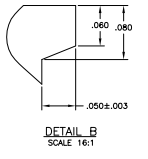
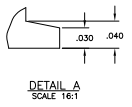
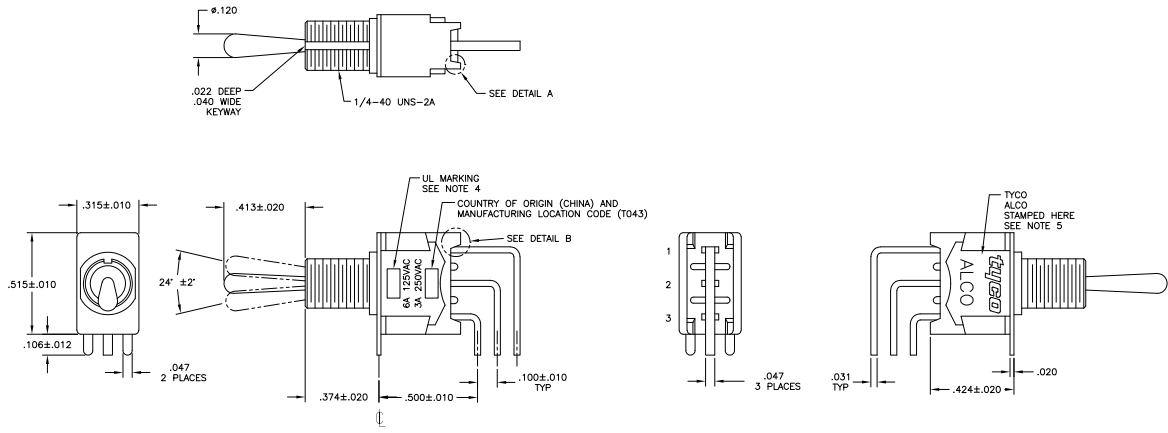
00779G-1571922

CUSTOMER DRAWING

REV. 4.1

1 9

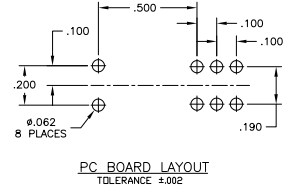
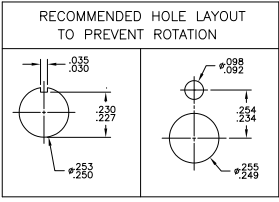
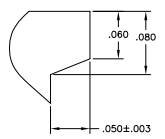
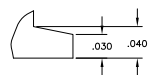
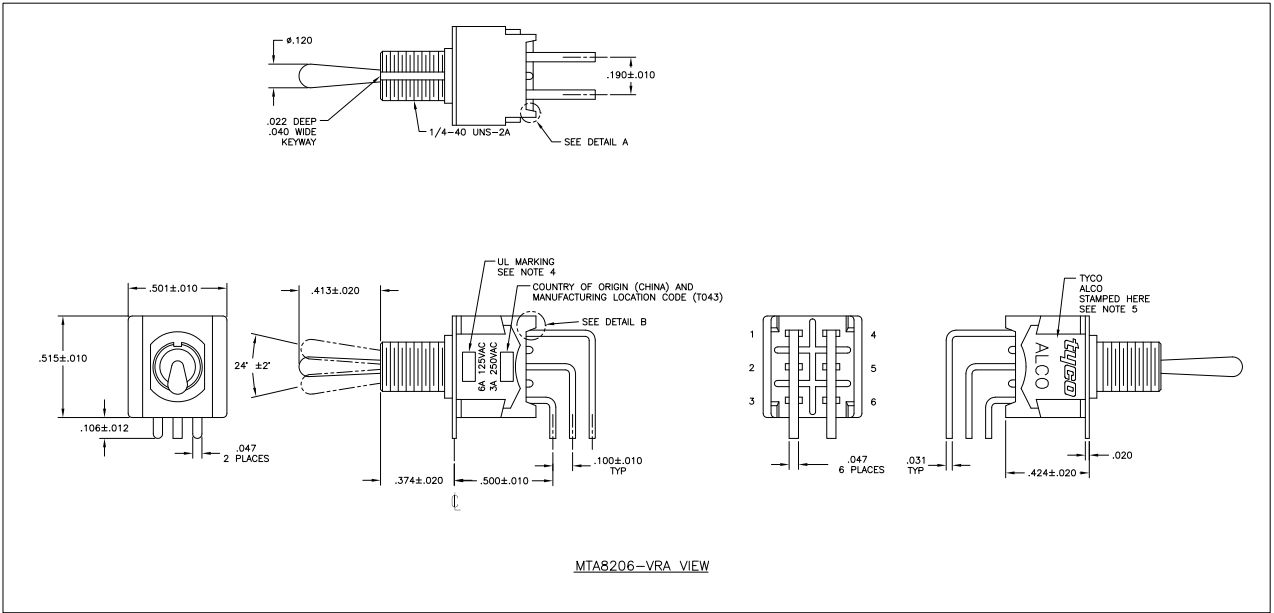
A



THIS DRAWING IS A CONTROLLED DOCUMENT.		REV	DATE	GROUP	BY	DATE	GROUP
REVISIONS		AD	00				
DESCRIPTION		ALCOSWITCH GREEN SERIES TOGGLE SWITCH MTA/MTM RA & VRA					
DRAWN BY		M. P. ZITTO					
CHECKED BY		M. P. ZITTO					
APPROVED BY		M. P. ZITTO					
DATE		00779	01	15	19	22	
CUSTOMER DRAWING		SEE SHEET 1					

THIS DRAWING IS UNPUBLISHED. RECEIVED FOR INFORMATION. ALL RIGHTS RESERVED.

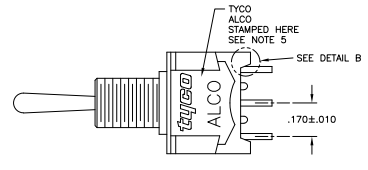
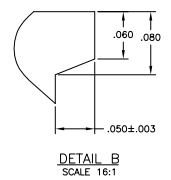
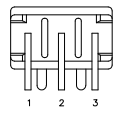
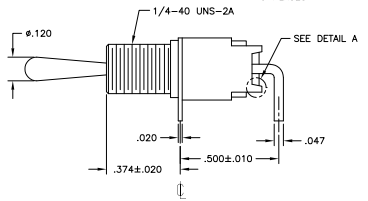
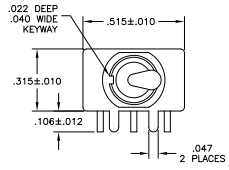
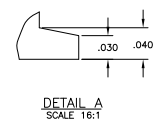
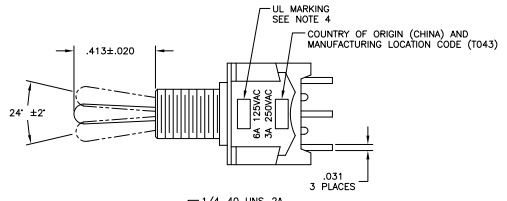
REV	DATE	DESCRIPTION	BY	APP'D
AD 00		SEE SHEET 1		



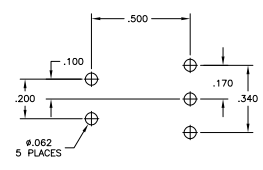
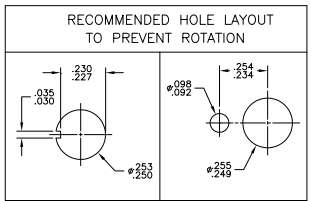
THIS DRAWING IS A CONTROLLED DOCUMENT.		REV	DATE	GROUP	BY	APP'D
DESIGNER'S LABEL:		AD				
NO. OF COPIES	NO. OF COPIES	REV	DATE	GROUP	BY	APP'D
1	1	AD				
CUSTOMER DRAWING		REV	DATE	GROUP	BY	APP'D
		A1	00779	G=1571922		
		REV	DATE	GROUP	BY	APP'D

THIS DRAWING IS UNPUBLISHED. REPRODUCED FOR INFORMATION.
 © 2015 TYCO ELECTRONICS CORPORATION. ALL RIGHTS RESERVED.

REVISONS		DATE	BY	APP'D
AD	00			



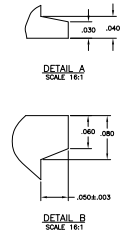
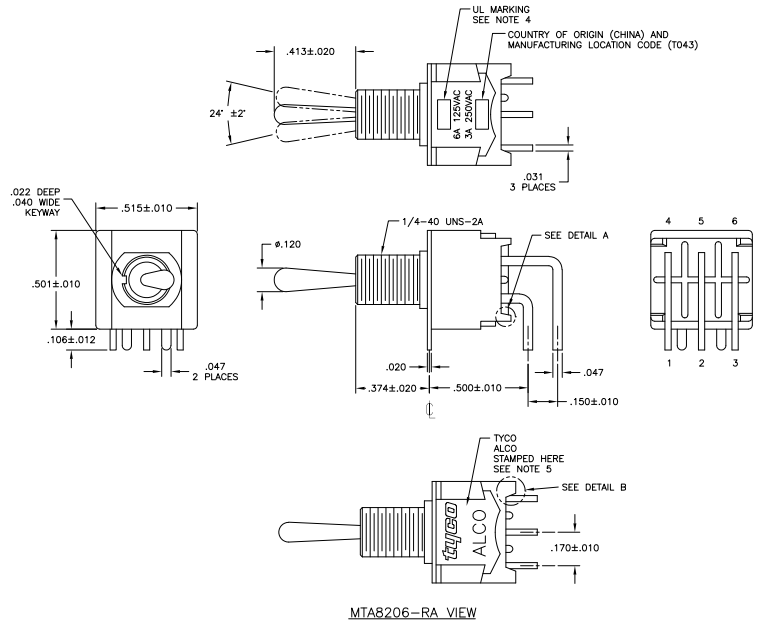
MT8106-RA VIEW



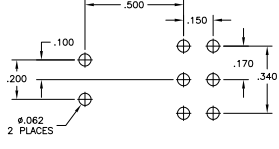
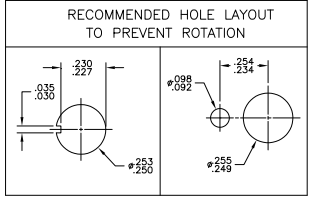
PC BOARD LAYOUT
 TOLERANCE $\pm .002$

THIS DRAWING IS A CONTROLLED DOCUMENT.		REV	DATE	GROUP	BY	CHKD	DATE
DRAWN BY: M. ZITTO		00					
CHECKED BY: M. ZITTO		TYCO ELECTRONICS CORPORATION Harrisburg, PA 17105-3608					
APPROVED BY: M. ZITTO		ALCOSWITCH GREEN SERIES TOGGLE SWITCH M/A/MTM RA & VRA					
PART: M/A 250VAC		SIZE	DATE	ISSUE	DRAWING NO.	REVISED TO	
PART: M/A 250VAC		A1	00779	G	1571922		
CUSTOMER DRAWING		SCALE	4:1	SHEET	4	TOTAL	9

REVISONS		DATE	BY	APP'D
AD	00			



MT8206-RA VIEW

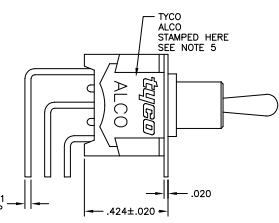
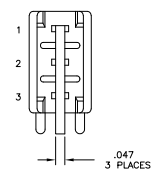
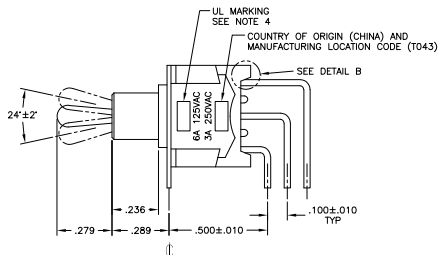
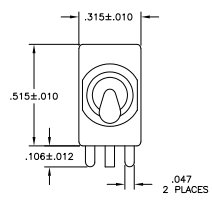
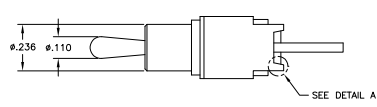


PC BOARD LAYOUT
 TOLERANCE ±.002

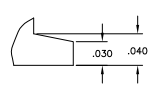
THIS DRAWING IS A CONTROLLED DOCUMENT.		REV	DATE	GROUP	BY	APP'D
REVISIONS		AD	00			
DESCRIPTION		ALCOSWITCH GREEN SERIES TOGGLE SWITCH MTA/MTM RA & VRA				
DRAWN		M. PITHO				
CHECKED		M. PITHO				
APPROVED		M. PITHO				
DATE		00779	01	1571922	REVISIONS TO	
CUSTOMER DRAWING		PAGE 4-1 OF 5				

THIS DRAWING IS UNPUBLISHED
 UNLESS INDICATED OTHERWISE
 © 2015 TYCO ELECTRONICS CORPORATION. ALL RIGHTS RESERVED.

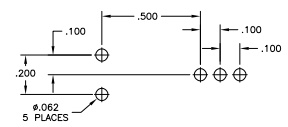
REVISONS		DATE	BY	APP'D
AD	00			



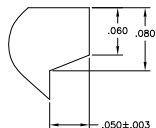
MTM8106-VRA VIEW



DETAIL A
SCALE 16:1



PC BOARD LAYOUT
TOLERANCE ±.002

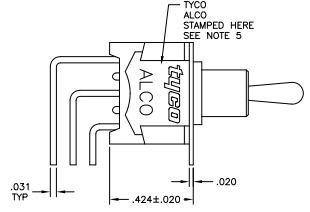
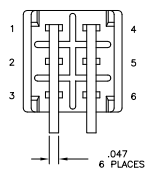
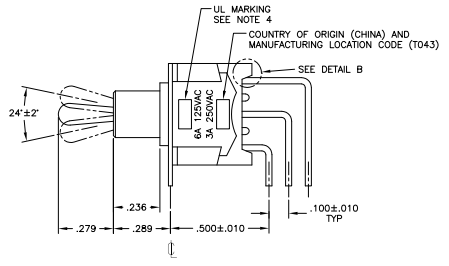
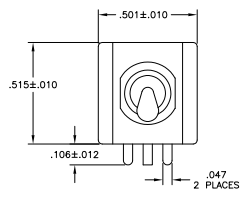
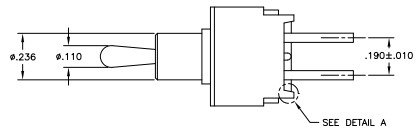


DETAIL B
SCALE 16:1

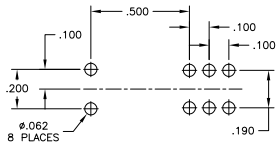
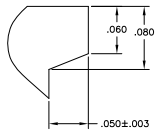
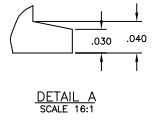
THIS DRAWING IS A CONTROLLED DOCUMENT.		REV	00001	DATE	
DESIGNED BY		CHK		DATE	
DRAWN BY		APP		DATE	
CHECKED BY		TEST		DATE	
APPROVED BY		ENG		DATE	
MATERIAL		REV		DATE	
PROCESS		REV		DATE	
CUSTOMER DRAWING		REV		DATE	

TYCO ELECTRONICS CORPORATION
 Harrisburg, PA 17105-3608
 ALCO SWITCH GREEN SERIES TOGGLE SWITCH
 MTA/MTM RA & VRA
 SIZE DATE SIZE DRAWING NO. REV. REWORKED TO
 A1 00779 G=1571922
 SHEET 4-1 OF 6 9 A

REVISONS		DATE	BY	APP'D
AD	00			

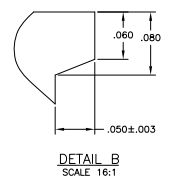
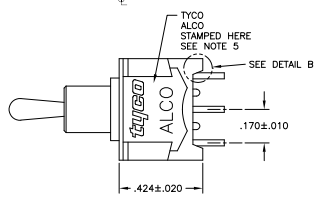
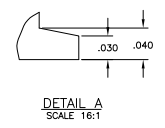
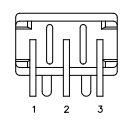
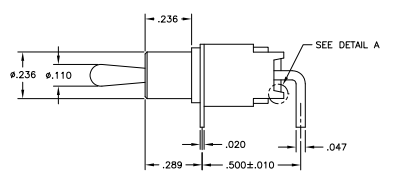
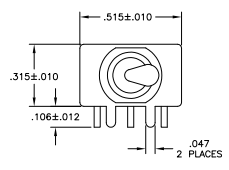
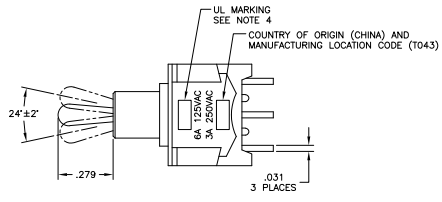


MTMB206-VRA VIEW

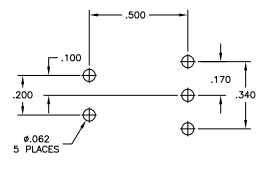


PC BOARD LAYOUT
TOLERANCE ± 0.002

THIS DRAWING IS A CONTROLLED DOCUMENT.		REV	GROUP	Tyco Electronics Corporation Harrisburg, PA 17105-3608	
DESIGNER	DATE	BY	DATE	ALCOSWITCH GREEN SERIES TOGGLE SWITCH MTA/MTM RA & VRA	
APPROVED		REVISED		SIZE	DATE ISSUED
				A1	00779
				REVISED TO	1571922
				DATE	7 9
				BY	A



MTM8106-RA VIEW

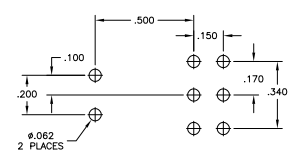
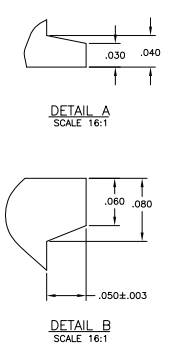
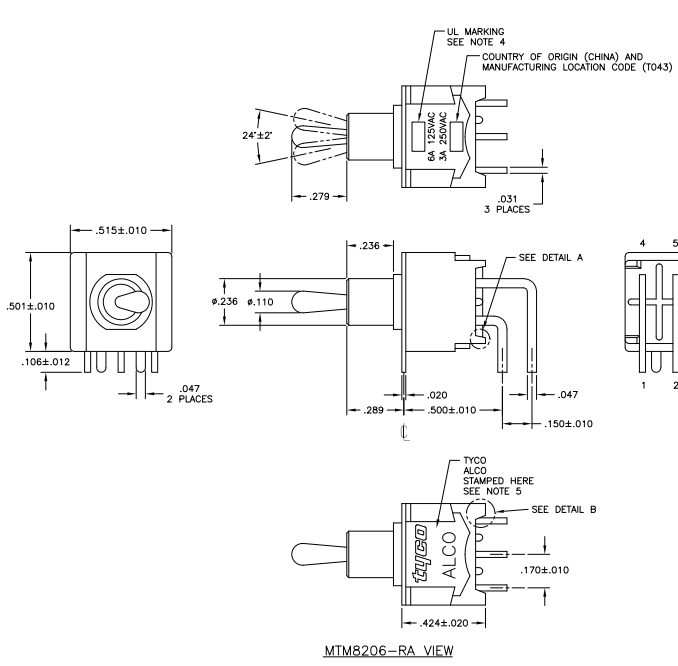


PC BOARD LAYOUT
TOLERANCE ±.002

THIS DRAWING IS A CONTROLLED DOCUMENT.		REV	DATE	GROUP	BY	CHKD	DATE
REVISIONS		AD	00				
DESCRIPTION		ALCOSWITCH GREEN SERIES TOGGLE SWITCH MTA/MTM RA & VRA					
DRAWN		M. PITHO					
CHECKED		M. PITHO					
APPROVED		M. PITHO					
DATE		00779		DRAWING NO.		1571922	
CUSTOMER DRAWING		A1		REV		8 9 A	

THIS DRAWING IS UNPUBLISHED. RECEIVED FOR INFORMATION.
 © 2015 TYCO ELECTRONICS CORPORATION. ALL RIGHTS RESERVED.

REVISONS		DATE	BY	APP'D
AD	00			



MTM8206-RA VIEW

PC BOARD LAYOUT
 TOLERANCE ±.002

THIS DRAWING IS A CONTROLLED DOCUMENT.		REV	DATE	GROUP	BY	DATE	GROUP
DRAWING NO.		AD	00				
REVISIONS							
DESCRIPTION							
MATERIAL							
QUANTITY							
DRAWN BY							
CHECKED BY							
APPROVED BY							
DATE							
DRAWING NO.							
CUSTOMER DRAWING							