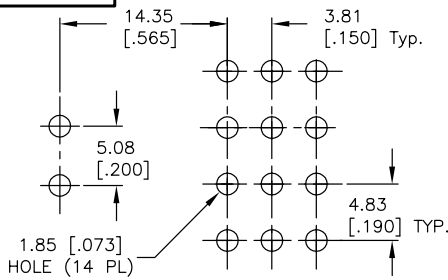
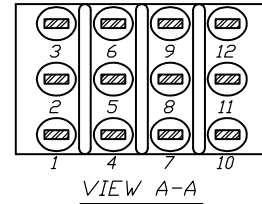
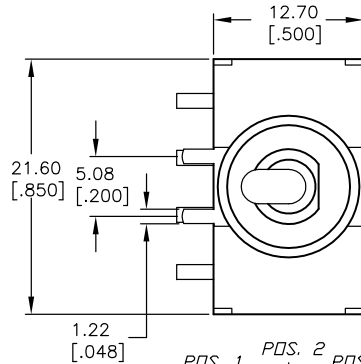


SHEET 1 OF 1

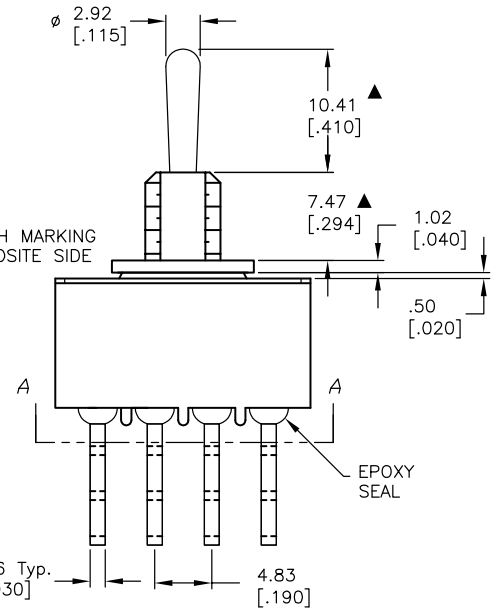
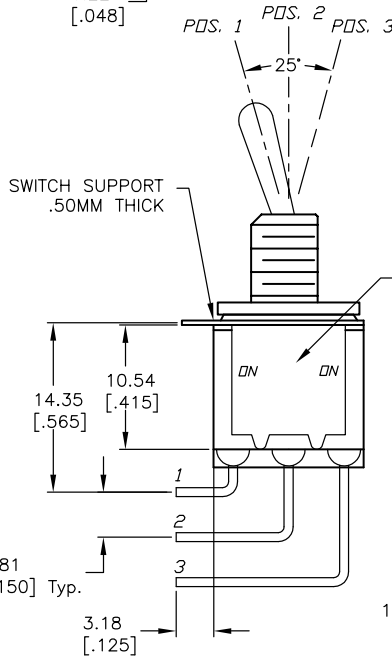


RECOMMENDED P.C.B. LAYOUT
SCALE: 2X



VIEW A-A

SWITCH FUNCTION		
POS. 1 DN	POS. 2 NONE	POS. 3 DN
2-3,5-6 8-9,11-12	OPEN	2-1,5-4 8-7,11-10



NOTES:

1. ALL DIMENSIONS IN MM [INCH]
2. GENERAL TOLERANCE: X.X=±0.4
X.XX=±0.25
3. TERMINAL NUMBERS FOR REF ONLY
4. RATING: 5A @120VACor 28VDC
2A @250VAC. w/resistive loads
5. CONTACT & TERM MATERIAL:
▲ Cu Alloy w/Silver plate.
6. ELECTRIC LIFE: 50,000 make-and-break cycles at full load.
7. INSULATION RESISTANCE: 1,000 Mega-ohm min.
8. DIELECTRIC STRENGTH: 1,000 V RMS @sea level.
9. OPERATING TEMP.: -30°C to 85°C
10. ▲ DENOTES CRITICAL PARAMETER.

E-SWITCH®

1004P1T1B9M7QE

REV.	ECN No.	DESCRIPTION	DATE	CHKD
A	13914	RELEASED FOR PRODUCTION	4/15/04	AR

TITLE				
SCALE	DATE	DR	DWG	REV
2:1	4/15/04	AR	T147001	A

THE INFORMATION CONTAINED IN THIS DOCUMENT IS PROPRIETARY TO E-SWITCH AND IS NOT TO BE COPIED OR TRANSFERRED