

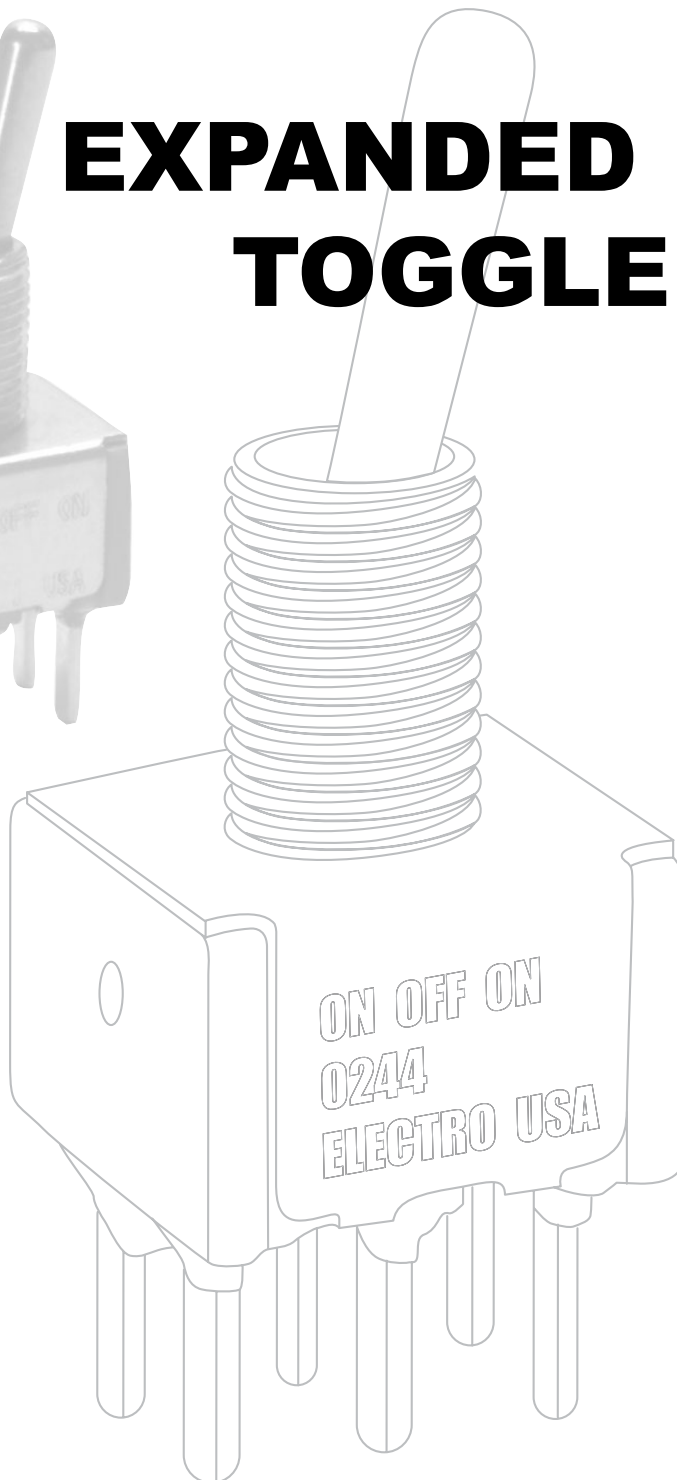


**ELECTROSWITCH**  
• **ELECTRONIC PRODUCTS**  

---

*UNIT OF ELECTRO SWITCH CORP.*

# EXPANDED "A SERIES" TOGGLE SWITCHES



**ISO 9001 Registered**

Phone: 888-768-2797 or 919-833-0707

Fax: 800-909-9171 or 919-833-8016

Web site: <http://www.electro-nc.com>

E-mail: [sales@electro-nc.com](mailto:sales@electro-nc.com)

## **Electroswitch Offers New Toggle Combinations to Cross Competition.**

Electroswitch is pleased to present this new expanded toggle brochure created to provide many additional crosses against competition:

**C&K 7000 and E Series**

**Alco A and MTA Series**

**NKK M2T and M Series**

**Apem ST and 5000 Series**

**E-Switch 100 and 100A Series**

All the new toggle switch combinations are produced at our plant in Raleigh, NC and you get the value of over 55 years of Electroswitch quality.

In the coming months we plan to further expand our miniature switch line to include competitive crosses for rockers and washables.

For information on all of our miniature and rotary switches, please check our web site at [www.electro-nc.com](http://www.electro-nc.com)





## SPECIFICATIONS:

### Contact Ratings -

Letter codes G,L and Q,M - 6 amp at 125 VAC, 3 amp @ 250 VAC (U.L. recognized, CSA certified) or 6 amp at 28 VDC resistive. Letter codes B,K and G,L - 0.5 volt-amp (VA) maximum @ 28 V maximum (AC or DC).

**Life Under Load** - 60,000 make-and-break cycles — resistive load only.

**Initial Contact Resistance** -10 milliohms maximum initial at 3 VDC, 100 ma for both silver and gold plated contacts.

**Insulation Resistance** - 1,000 megohms, min.

**Dielectric Strength** - 1,000 volts RMS minimum at sea level.

**Weight (including hardware)** - SP 0.19 oz.; DP 0.23 oz.; 3-pole 0.28 oz.; 4-pole 0.32 oz.

## STANDARD MATERIALS:

**Base (body)** - Diallyl Phthalate (DAP).

**Lever (toggle)** - Brass, chrome plated.

**Flat Lever** - Brass, satin chrome finish.

**Locking Lever Cap** - Anodized aluminum.

**Bushing** - Brass, nickel plated.

**Clamp (frame)** - Stainless steel.

**Support Brackets** - Steel, tin plated.

**Switching Contacts and Rockers** -

Letter Code B,K - gold/nickel/brass

Letter Code G,L - gold/nickel/silver

Letter Code Q,M - Coin silver

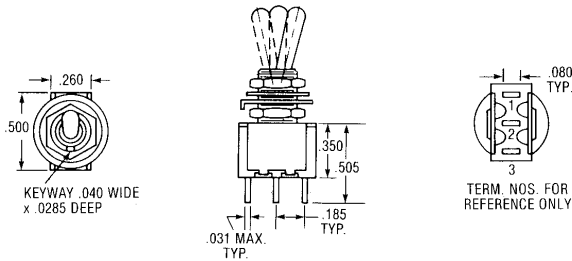
**Center Terminal**

Letter Codes B,K, G,L - Gold flash/nickel/brass

Letter Code Q,M - Silver plated brass.

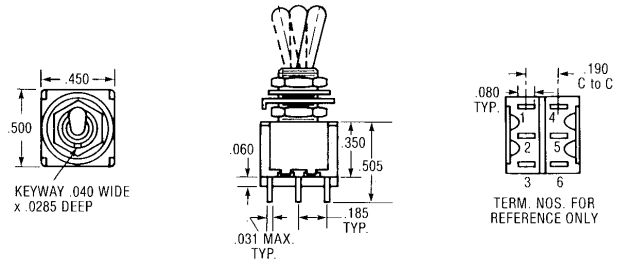
**Epoxy sealed terminals are supplied as standard**

## STANDARD DIMENSIONS & PART NUMBERS



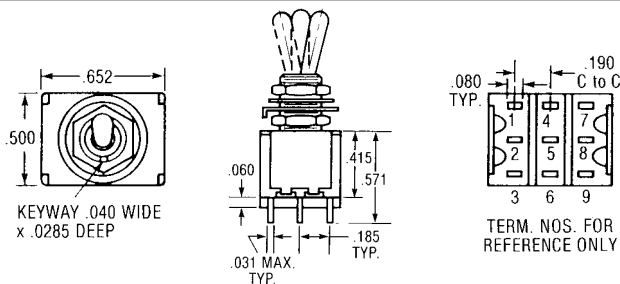
### ONE POLE

Keyway			Code	Part Number
ON	OFF	POS. "C"		
ON	OFF	ON	21	A121S1YZQ
ON	NONE	ON	23	A123S1YZQ
ON	NONE	ON*	26	A126S1YZQ
ON*	OFF	ON*	27	A127S1YZQ



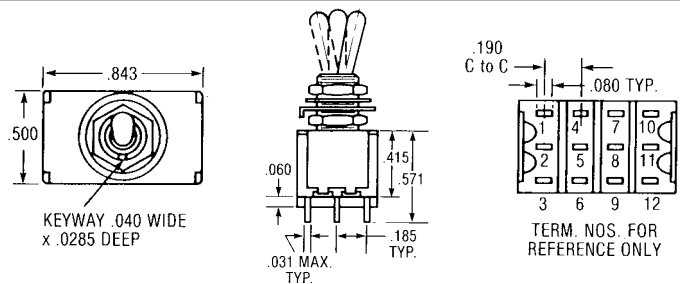
### TWO POLE

Keyway			Code	Part Number
ON	OFF	POS. "C"		
ON	OFF	ON	21	A221S1YZQ
ON	NONE	ON	23	A223S1YZQ
ON	NONE	ON*	26	A226S1YZQ
ON*	OFF	ON*	27	A227S1YZQ



### THREE POLE

Keyway			Code	Part Number
ON	OFF	POS. "C"		
ON	OFF	ON	21	A321S1YZQ
ON	NONE	ON	23	A323S1YZQ
ON	NONE	ON*	26	A326S1YZQ
ON*	OFF	ON*	27	A327S1YZQ



### FOUR POLE

Keyway			Code	Part Number
ON	OFF	POS. "C"		
ON	OFF	ON	21	A421S1YZQ
ON	NONE	ON	23	A423S1YZQ
ON	NONE	ON*	26	A426S1YZQ
ON*	OFF	ON*	27	A427S1YZQ

# TOGGLE LEVER OPTIONS

<p><b>S</b> Std. Bat (.410")</p>	<p><b>T</b> Large Toggle</p>	<p><b>T1</b> Large Toggle</p>	<p><b>T2</b></p> <p><b>NEW</b></p>
<p><b>M</b> Short (.200")</p>	<p><b>P1</b> Flatted (.840")</p> <p>Not available with lever seal</p>	<p><b>P3</b> Flatted (.448")</p> <p>Not available with lever seal</p>	<p><b>P4</b> Flatted (.250")</p> <p>Not available with lever seal</p>
<p><b>L0</b> Long (.840")</p> <p>Lever shown with dimensions for .352 long bushings</p>	<p><b>L1</b> Long (.640")</p> <p>Lever shown with dimensions for .352 long bushings</p>	<p><b>L2</b> Long (.550")</p> <p>Lever shown with dimensions for .352 long bushings</p>	<p><b>L3</b> Plastic (.840")</p> <p>Lever shown with dimensions for .352 long bushings</p>
<p><b>L4</b> Plastic (.571")</p> <p>Lever shown with dimensions for .352 long bushings</p>	<p><b>K1</b> Locking Lever</p> <p>Lever cap supplied with anodized finish only. No lever seals.</p>	<p><b>K12</b> Threaded <b>K19</b> Unthreaded</p> <p><b>NEW</b></p> <p>Lever cap supplied with anodized finish only. No lever seals.</p>	<p><b>K2</b> Threaded <b>K9</b> Unthreaded</p> <p><b>NEW</b></p> <p>Lever cap supplied with anodized finish only. No lever seals.</p>

## LEVER LOCK BUSHING STYLES

<p><b>STYLE 1</b></p> <p>ON-OFF-ON</p> <p>Locked In Three Positions</p>	<p><b>STYLE 2</b></p> <p>ON-NONE-ON</p> <p>Locked Out Of Center Positions</p>	<p><b>STYLE 3</b></p> <p>ON-NONE-ON*</p> <p>Locked Into Side Opposite Keyway – Momentary Keyway Side</p>	<p><b>STYLE 4</b></p> <p>ON*-OFF-ON*</p> <p>Locked In Center Position – Momentary Either Side</p>	<p><b>STYLE 5</b></p> <p>ON-OFF-ON*</p> <p>Locked In Center Position – Momentary Keyway Side</p>
---	---	--	---	--

# BUSHING OPTIONS

<b>CX</b>	Threaded with Lever Seal
<b>Y</b>	Threaded
<b>Y9</b>	Smooth (No Keyway)
<b>Y91</b>	Smooth w / Keyway

**NEW**

<b>D</b>	Threaded
<b>D9</b>	Smooth (No Keyway)
<b>D91</b>	Smooth w / Keyway
<b>D8</b>	Smooth w / Flat

**NEW**

Add 0.070 to actuator length when using a .280 long bushing.

<b>H</b>	High Torque Flatted with Shoulder
----------	-----------------------------------

WILL WITHSTAND 12 IN.-LBS. OF TORQUE WITH NO DISTORTION

<b>H4</b>	8mm Threaded High Torque
-----------	--------------------------

**NEW**

Will withstand 12 in-lbs of torque with no distortion.

<b>H3</b>	High Torque
-----------	-------------

WILL WITHSTAND 12 IN.-LB OF TORQUE WITH NO DISTORTION. FOR H3 OPTION SUBTRACT .020 FROM ALL TOGGLE LENGTHS.

<b>H31</b>	(.315") Threaded High Torque
------------	------------------------------

**NEW**

Will withstand 12 in-lbs of torque with no distortion.

<b>Y1</b>	(.370") Threaded High Torque
<b>Y4</b>	(.370") Flat Threaded High Torque

**NEW**

<b>Y5</b>	Long Bushing (.437")
-----------	----------------------

<b>T&amp;TX</b>	Bushing for T, T1 and T2 Bats
-----------------	-------------------------------

<b>CW</b>	Splashproof Sealed Lever and Panel Seal
-----------	---

<b>TW</b>	Splashproof Sealed Lever and Panel Seal
-----------	---

<b>P</b>	Anti-Rotation
----------	---------------

ANTI-ROTATION (OPTION P) IS AVAILABLE FOR MOST BUSHING TOGGLE COMBINATIONS.

Anti rotation for 15/32" bushing not done w/pin.

# TERMINATION SWITCHES

C	Printed Circuit	W	Wire-Wrap	W1	Wire-Wrap	W3	Wire-Wrap	W4	Wire-Wrap	Z	Standard	Z3	Quick Connect
							Not available in K,L, and M contact materials.						

## TERMINATION / MOUNTING SWITCHES

<b>A</b> <b>A3</b>	Right Angle PC Std. Right Angle Snap in						<b>ONE POLE</b>	Terminal bend radii manufacturing option.
<b>A</b> <b>A3</b>	Right Angle PC Std. Right Angle Snap in						<b>TWO POLE</b>	Terminal bend radii manufacturing option.
<b>A</b> <b>A3</b>	Right Angle PC Std. Right Angle Snap in						<b>THREE POLE</b>	Terminal bend radii manufacturing option.

## EXTENDED TERMINAL OPTIONS (Right Angle PC Terminals)

<b>AW</b>	<b>AW1</b>	<b>AW3</b>	<b>AW4</b>	Right Angle, Extended PC Thru-Hole	<b>AW</b>	<b>AW1</b>	<b>AW4</b>	Right Angle, Extended PC Thru-Hole	<b>AW4</b>	Right Angle, Extended PC Thru-Hole																		
<b>NEW</b>		<table border="1"> <thead> <tr> <th>OPTION CODE</th> <th>DIM "A"</th> </tr> </thead> <tbody> <tr> <td>AW</td> <td>.50</td> </tr> <tr> <td>AW1</td> <td>.72</td> </tr> <tr> <td>AW3</td> <td>.20</td> </tr> <tr> <td>AW4</td> <td>.83</td> </tr> </tbody> </table>	OPTION CODE	DIM "A"	AW	.50	AW1	.72	AW3	.20	AW4	.83	<b>ONE POLE</b>	<b>NEW</b>		<table border="1"> <thead> <tr> <th>OPTION CODE</th> <th>DIM "A"</th> </tr> </thead> <tbody> <tr> <td>AW</td> <td>.19</td> </tr> <tr> <td>AW1</td> <td>.40</td> </tr> <tr> <td>AW4</td> <td>.50</td> </tr> </tbody> </table>	OPTION CODE	DIM "A"	AW	.19	AW1	.40	AW4	.50	<b>TWO POLE</b>	<b>NEW</b>		<b>THREE POLE</b>
OPTION CODE	DIM "A"																											
AW	.50																											
AW1	.72																											
AW3	.20																											
AW4	.83																											
OPTION CODE	DIM "A"																											
AW	.19																											
AW1	.40																											
AW4	.50																											

# TERMINATION / MOUNTING OPTIONS

**A2** Right Angle PC .156" Spacing

**NEW**

Not available w/ CW, H, H3, T, TX, TW, T1, K2, K9, K19, H4, Y1, & Y4. Large bushing and shoulders interfere with printed circuit board.

**A4** Right Angle PC .156" Spacing

**NEW**

Not available w/ CW, H, H3, T, TX, TW, T1, K2, K9, K19, H4, Y1, & Y4. Large bushing and shoulders interfere with printed circuit board.

**A7** Right Angle PC .200" Spacing

**NEW**

Not available w/ CW, H, H3, T, TX, TW, T1, K2, K9, K19, H4, Y1, & Y4. Large bushing and shoulders interfere with printed circuit board.

**R** Right Angle Same Throw

**ONE POLE**

Not available w/ CW, H, H3, T, TX, TW, T1, K2, K9, K19, H4, Y1, & Y4. Large bushing and shoulders interfere with printed circuit board. Not UL or CSA recognized.

**R2** Right Angle Opposite Throw

**ONE POLE**

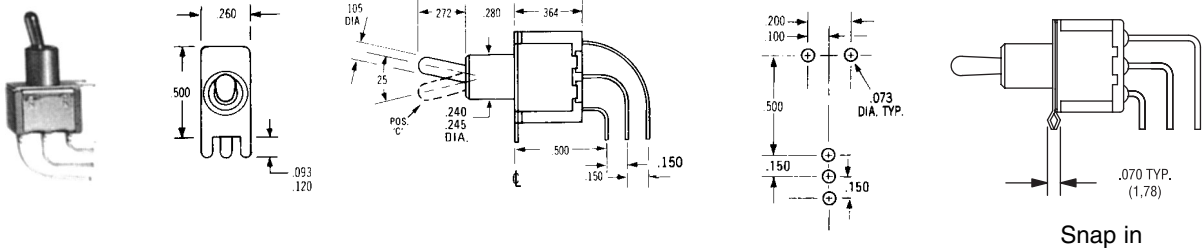
Not available w/ CW, H, H3, T, TX, TW, T1, K2, K9, K19, H4, Y1, & Y4. Large bushing and shoulders interfere with printed circuit board.



# TERMINATION / MOUNTING OPTIONS

- AV w/.100" Terminal Spacing
- AV2 w/.150" Terminal Spacing (pictured below)
- AV3 w/.150" Terminal Spacing Snap in Bracket

**NEW**

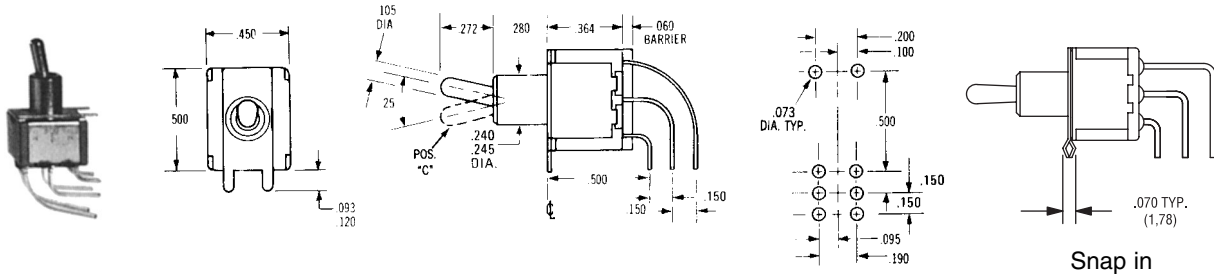


## ONE POLE

Terminal bend radii manufacturing option.

- AV w/.100" Terminal Spacing
- AV2 w/.150" Terminal Spacing (pictured below)
- AV3 w/.150" Terminal Spacing Snap in Bracket

**NEW**

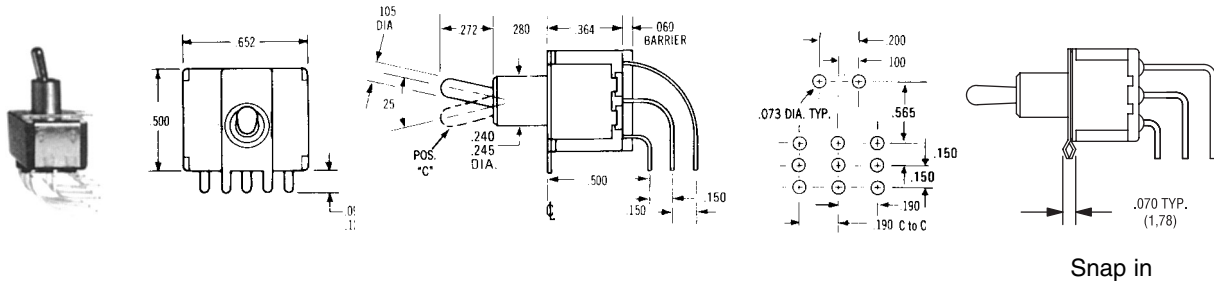


## TWO POLE

Terminal bend radii manufacturing option.

- AV w/.100" Terminal Spacing
- AV2 w/.150" Terminal Spacing (pictured below)
- AV3 w/.150" Terminal Spacing Snap in Bracket

**NEW**

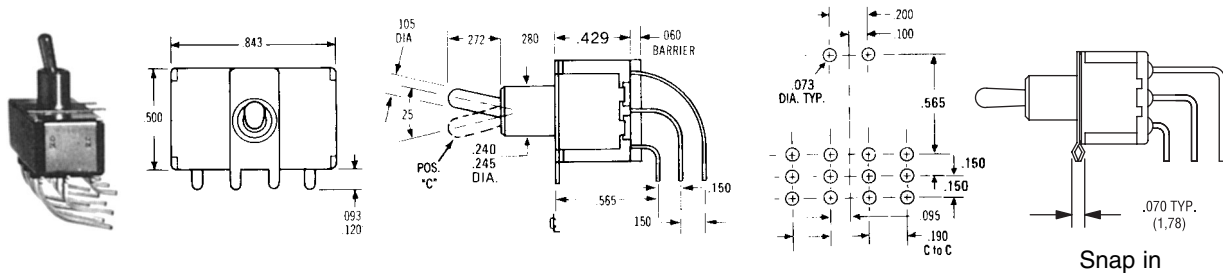


## THREE POLE

Terminal bend radii manufacturing option.

- AV w/.100" Terminal Spacing
- AV2 w/.150" Terminal Spacing (pictured below)
- AV3 w/.150" Terminal Spacing Snap in Bracket

**NEW**



## FOUR POLE

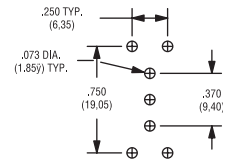
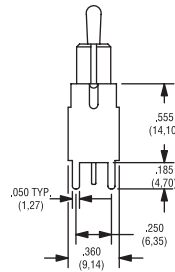
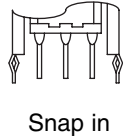
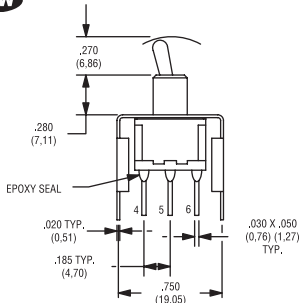
Terminal bend radii manufacturing option.

# TERMINATION MOUNTING OPTIONS

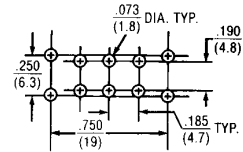
**V20** .555" high bracket HD

**V21** Snap In HD

**NEW**



**ONE POLE**

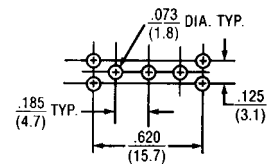
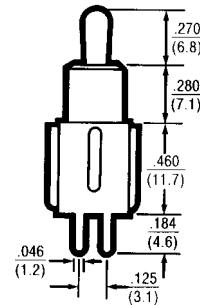
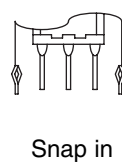
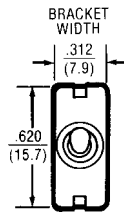
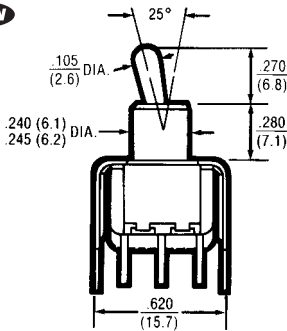


**TWO POLE**

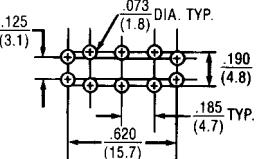
**V30** .460" high bracket

**V31** Snap In

**NEW**



**ONE POLE**

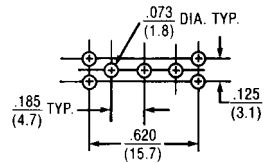
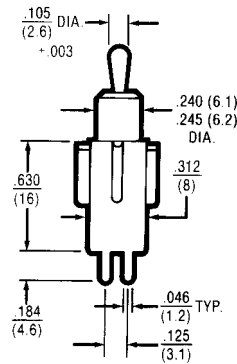
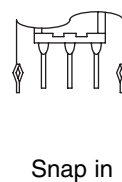
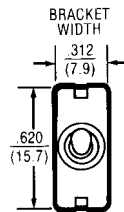
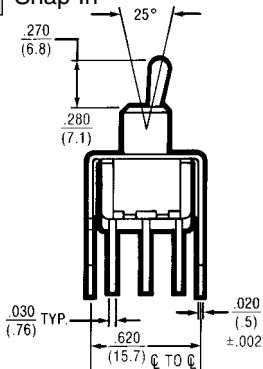


**TWO POLE**

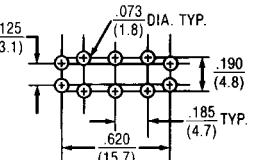
**V40** .630" high bracket

**V41** Snap In

**NEW**



**ONE POLE**

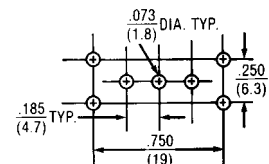
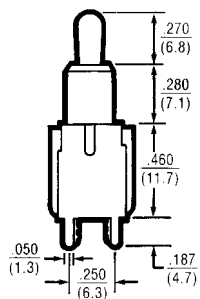
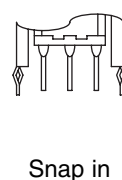
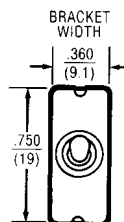
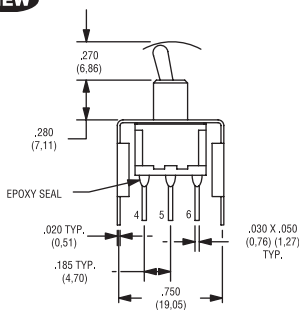


**TWO POLE**

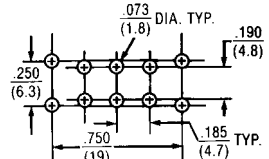
**V60** .460" high bracket HD

**V61** Snap In HD

**NEW**



**ONE POLE**

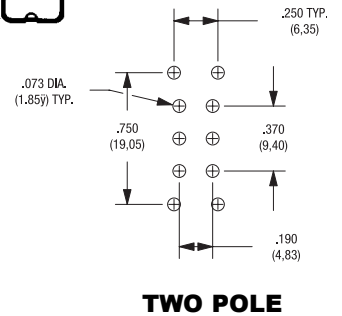
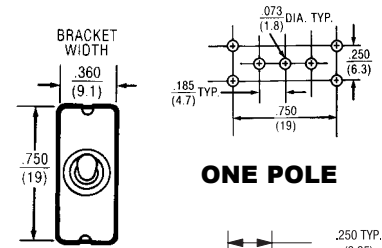
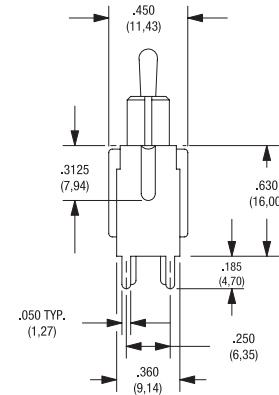
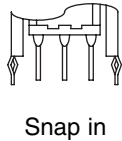
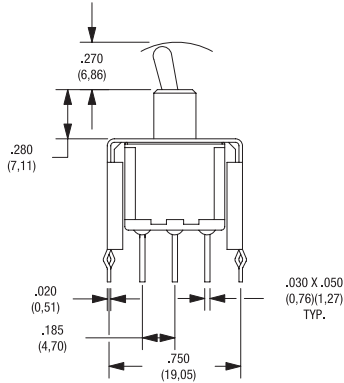


**TWO POLE**

# TERMINATION / MOUNTING OPTIONS

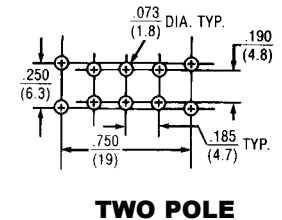
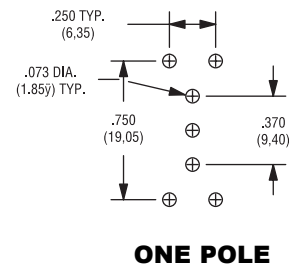
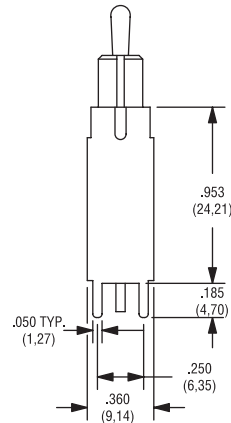
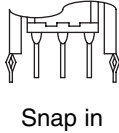
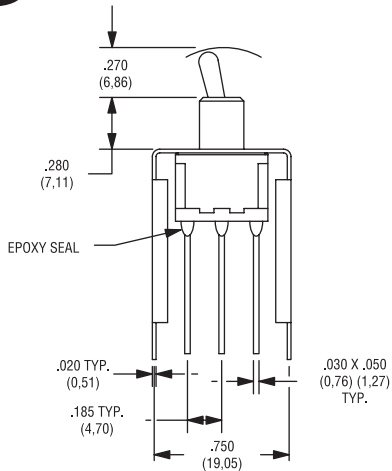
**V70** .630" high bracket HD  
**V71** Snap In HD

**NEW**



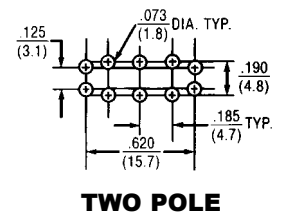
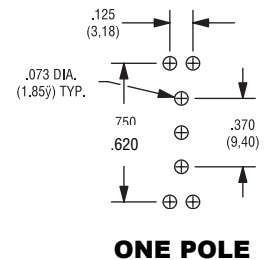
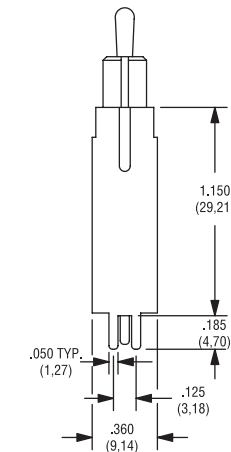
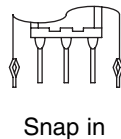
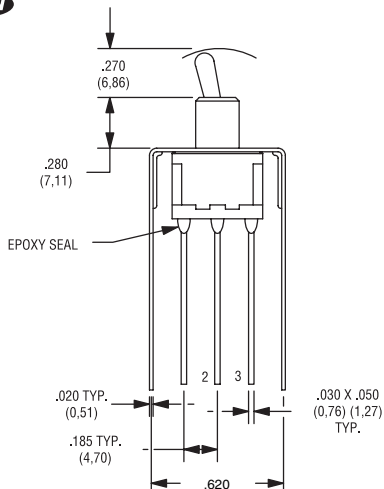
**V80** .953" high bracket HD  
**V81** Snap In HD

**NEW**



**V90** 1.150" high bracket  
**V91** Snap In

**NEW**





2010 Yonkers Road  
Raleigh, North Carolina 27604 USA  
Phone: 888-768-2797 or 919-833-0707  
Fax: 800-909-9171 or 919-833-8016  
Web site: <http://www.electro-nc.com>  
E-mail: [sales@electro-nc.com](mailto:sales@electro-nc.com)