

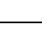
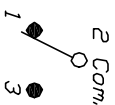


SWITCH FUNCTION		
POS. 1	POS. 2	POS. 3
		
DN	OFF	<DN>
2-3	DPEN	2-1

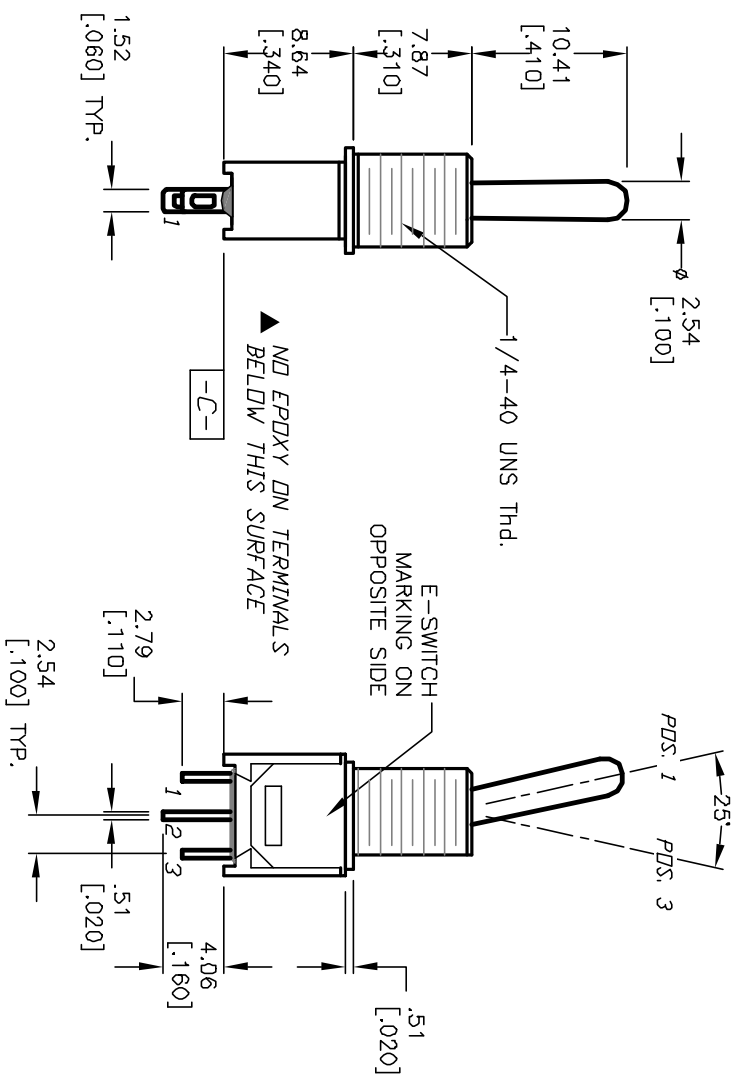
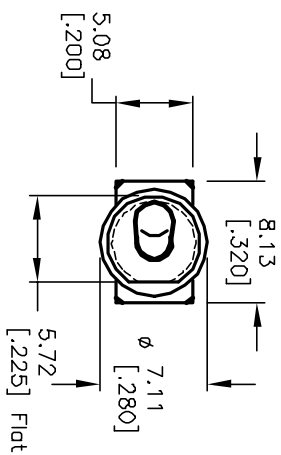
< >=Momentary



CIRCUIT: SPDT
CONTACT CONFIGURATION

NOTES:

1. ALL DIMENSIONS IN MM [INCH]
2. GENERAL TOLERANCE: X.X=±0.4
X.XX=±0.25
3. TERM. NOS. FOR REF. ONLY
4. CONTACT RATING: 3A @120VAC or 28VDC;
1A @250VAC
5. FIXED TERMINAL & MOVING CONTACT:
Copper alloy w/Silver plate.
6. ELECTRIC LIFE: 30,000 make-and-break cycles
at full load.
7. INSULATION RESISTANCE: 1,000 M ohm min.
8. DIELECTRIC STRENGTH: 1,000 V RMS @sea level.
9. OPERATING TEMP.: -30°C to 85°C
- ▲ 10. DESIGNATE MAJOR FEATURE:



E-SWITCH®

REV.	ECN NO.	DESCRIPTION	DATE	CHKD
A	12268	RELEASED FOR PRODUCTION	6/26/02	CJB

TITLE	SCALE	DATE	DR	DWG	REV
200 MSP-5 T4 B5 M1 Q E	2:1	6/26/02	CJB	T211087	A

THE INFORMATION CONTAINED IN THIS DOCUMENT IS PREPARED FOR THE SWITCH AND IS NOT TO BE COPIED OR TRANSMITTED