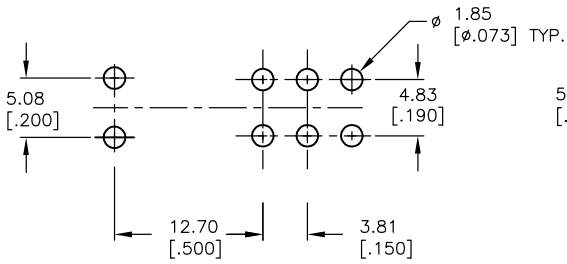
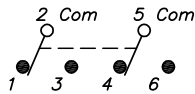


SHEET OF



RECOMMENDED P.C.B. LAYOUT

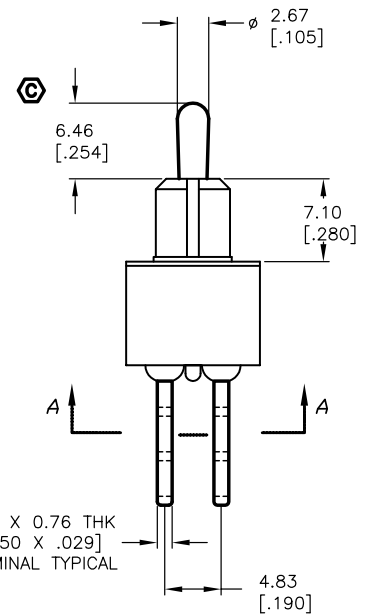
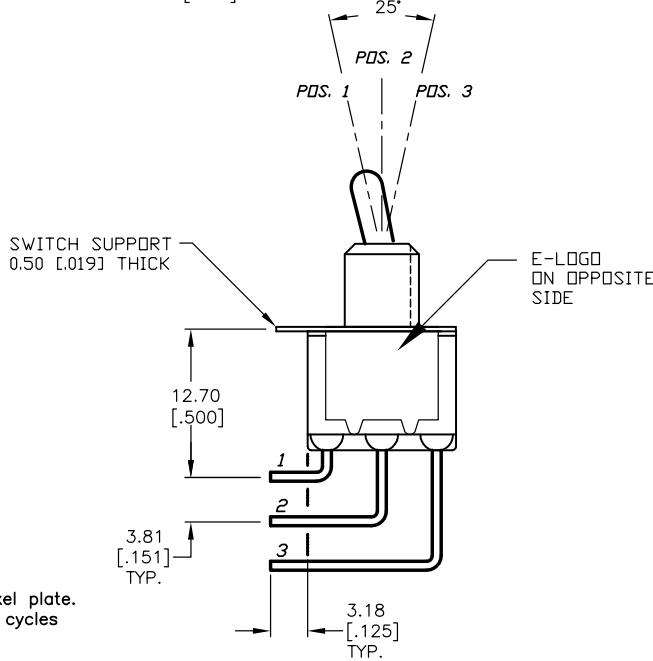
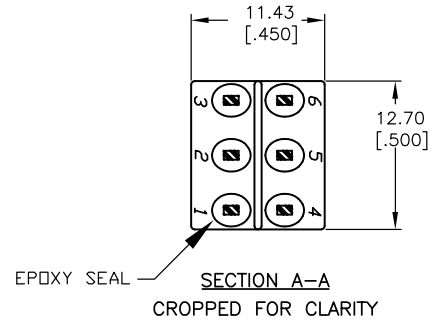
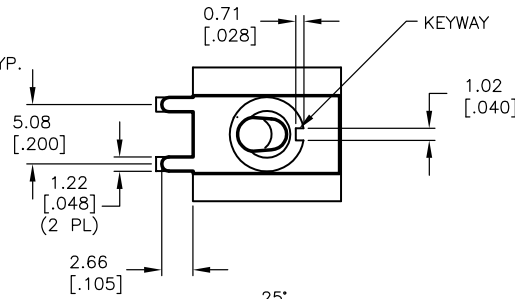


CIRCUIT: DPDT CONTACT CONFIGURATION

SWITCH FUNCTION		
PDS. 1	PDS. 2	PDS. 3
ON	NONE	ON
2-3,5-6	OPEN	2-1,5-4

NOTES:

1. ALL DIMENSIONS IN MM [INCH]
2. GENERAL TOLERANCE: X.X=±0.4  
X.XX=±0.25
3. TERM. NOS. FOR REF. ONLY
4. RATING: 0.4VA @20V AC/DC max.
- ▲ 5. FIXED TERM. & MOVING CONTACT:  
Copper Alloy W/GOLD plate over Nickel plate.
6. ELECTRICAL LIFE: 50,000 make-and-break cycles at full load.
7. INSULATION RESISTANCE: 1,000M ohm min.
8. DIELECTRIC STRENGTH: 1,000V RMS @sea level.
9. OPERATING TEMP.: -30°C to +85°C.



**E-SWITCH®**

C	14057	CORRECTED ACTUATOR HEIGHT	6/1/04	AR
B	12005	REVISED AND REDRAWN	3/20/02	CJB
REV.	ECN No.	DESCRIPTION	DATE	CHKD

TITLE				
100 DP-1 T2 B4 M7 R E (GOLD CONTACTS)				
SCALE	DATE	DR	DWG	REV
2:1	3/20/02	CJB	T121053	C

THE INFORMATION CONTAINED IN THIS DOCUMENT IS PROPRIETARY TO E-SWITCH AND IS NOT TO BE COPIED OR TRANSFERRED