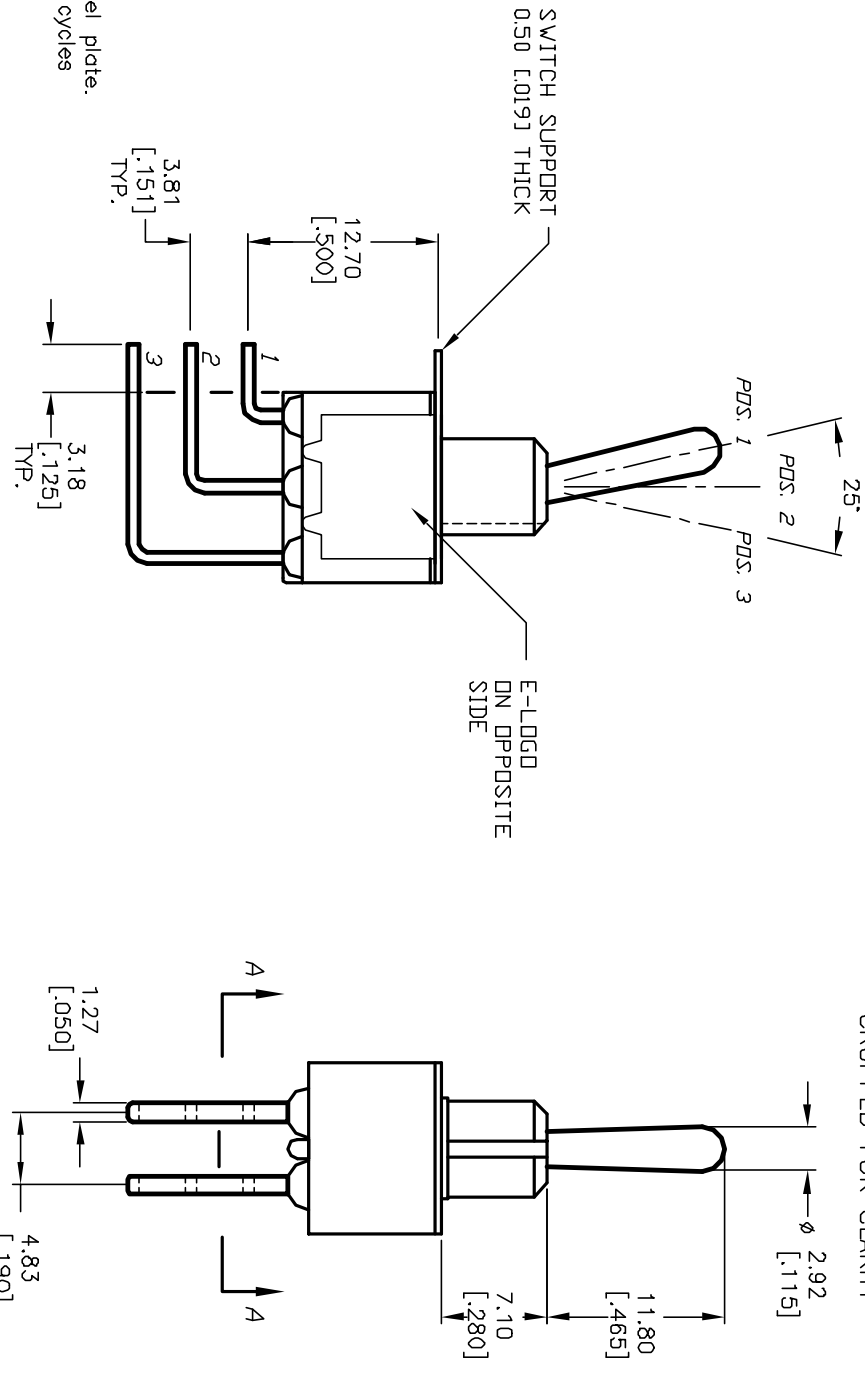


| SWITCH FUNCTION | | |
|-----------------|--------|---------|
| PDS. 1 | PDS. 2 | PDS. 3 |
| DN | N/DNE | DN |
| 2-3,5-6 | DPEN | 2-1,5-4 |

NOTES:

1. ALL DIMENSIONS IN MM [INCH]
2. GENERAL TOLERANCE: X.X=±0.4 X.XX=±0.25
3. TERM. NOS. FOR REF. ONLY
4. RATING: 0.4VA @20V AC/DC max.
5. FIXED TERM. & MOVING CONTACT:
Copper Alloy W/GOLD plate over Nickel plate.
at full load.
6. ELECTRICAL LIFE: 50,000 make-and-break cycles
7. INSULATION RESISTANCE: 1,000M ohm min.
8. DIELECTRIC STRENGTH: 1,000V RMS @sea level.
9. OPERATING TEMP.: -30°C to +85°C.



| | | | | | | | | | | | |
|------------|--|---------------------|--|---------|--|------|--|-------|--|---------------------------------------|--|
| REV. 12005 | | REVISED AND REDRAWN | | 3/20/02 | | CJB | | TITLE | | 100 DP-1 T1 B4 M7 R E (GOLD CONTACTS) | |
| ECN No. | | DESCRIPTION | | DATE | | CHKD | | SCALE | | DATE | |
| | | | | | | | | 2:1 | | 3/20/02 | |
| | | | | | | | | DR | | CJB | |
| | | | | | | | | DWG | | T121001 | |
| | | | | | | | | REV | | B | |

THE INFORMATION CONTAINED IN THIS DOCUMENT IS PRELIMINARY AND SUBJECT TO CHANGE WITHOUT NOTICE. THIS DOCUMENT IS NOT TO BE COPIED OR REPRODUCED.

E-SWITCH®