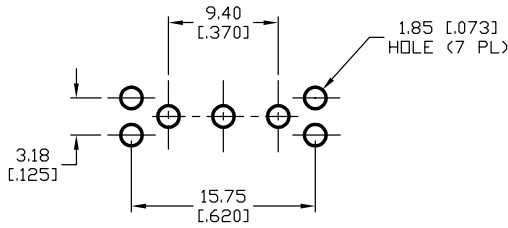


SHEET OF



RECOMMENDED P.C.B LAYOUT
SCALE: 2X

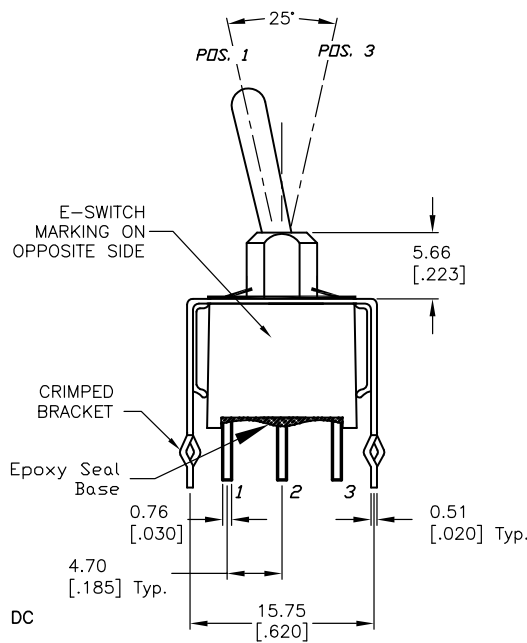
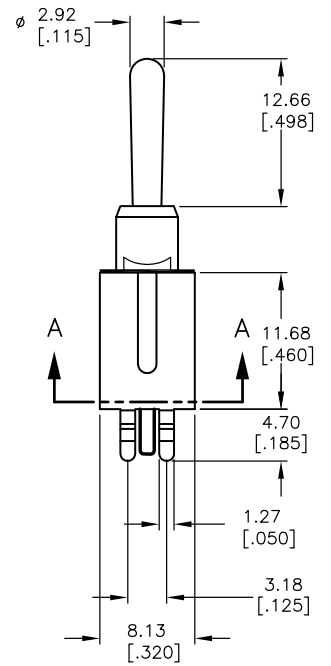
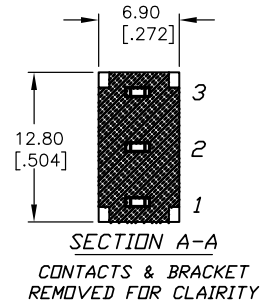
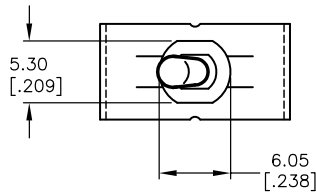


SPDT CIRCUIT
CONTACT CONFIGURATION

SWITCH FUNCTION		
POS. 1	POS. 2	POS. 3
ON	OFF	ON
2-3	OPEN	2-1

NOTES:

1. ALL DIMENSIONS IN MM
2. GENERAL TOLERANCE: X.X=±0.4
X.XX=±0.25
3. TERMINAL NUMBERS FOR REF ONLY
4. RATING: 0.4 VOLT AMPS MAX. @20V MAX AC OR DC
5. FIXED TERM. & MOVING CONTACT:
COPPER ALLOY WITH GOLD PLATE OVER NICKLE PLATE
6. ELECTRIC LIFE: 50,000 make-and-break cycles
at full load.
7. INSULATION RESISTANCE: 1,000 Mega-ohm min.
8. DIELECTRIC STRENGTH: 1,000 V RMS @sea level.
9. OPERATING TEMP.: -30°C to 85°C



E-SWITCH®

A	13975	RELEASED FOR PRODUCTION	4/30/04	AR
REV.	ECN No.	DESCRIPTION	DATE	CHKD

THE INFORMATION CONTAINED IN THIS DOCUMENT IS PROPRIETARY TO E-SWITCH AND IS NOT TO BE COPIED OR TRANSFERRED

TITLE				
100AWSP3T1B4VS21RE				
SCALE	DATE	DR	DWG	REV
2:1	4/30/04	AR	T101010	A