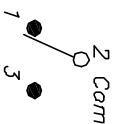


RECOMMENDED P.C.B. LAYOUT



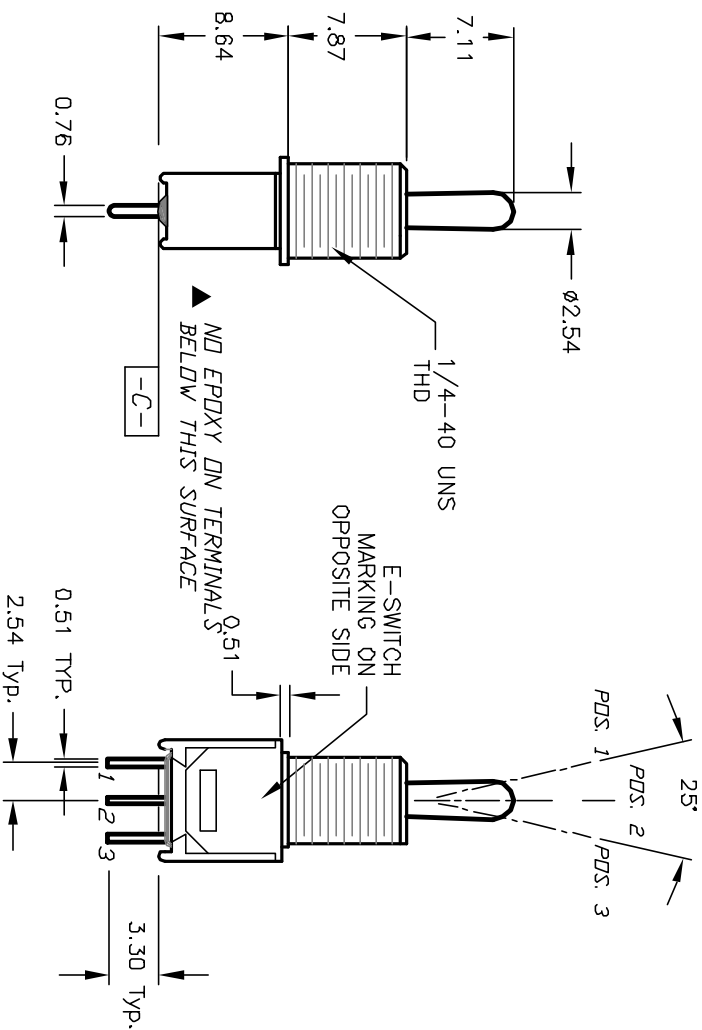
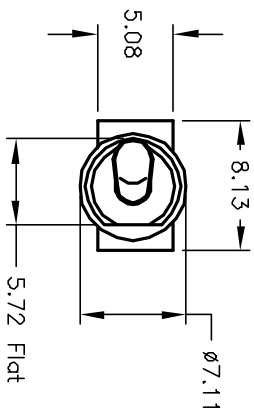
CIRCUIT: SPDT

SWITCH FUNCTION		
PDS. 1	PDS. 2	PDS. 3
(DN)	(UP)	(DN)
2-3	OPEN	2-1

() =Momentary

NOTES:

1. ALL DIMENSIONS IN MM
2. GENERAL TOLERANCE: X.X=±0.4
X.XX=±0.25
3. TERM. NOS. FOR REF. ONLY
4. CONTACT RATING: 3A @120VAC OR 28VDC,
1A @250VAC
5. FIXED TERM/MOVING CONTACT
COPPER ALLOY W/SILVER PLATE.
6. ELECTRIC LIFE: 30,000 make-and-break cycles
at full load.
7. INSULATION RESISTANCE: 1,000 M ohm min.
8. DIELECTRIC STRENGTH: 1,000 V RMS @sea level.
9. OPERATING TEMP. -30°C to 85°C
10. ▲ DESIGNATE MAJOR FEATURE



E-SWITCH®

200 MSP-4 T2 B1 M2 Q E

REV.	ECN NO.	DESCRIPTION	DATE	CHK'D
A	12587	RELEASED FOR PRODUCTION	11/20/02	CJB

TITLE	SCALE	DATE	DR	DWG	REV
200 MSP-4 T2 B1 M2 Q E	2:1	11/20/02	CJB	T214050	A

THE INFORMATION CONTAINED IN THIS DOCUMENT IS PRELIMINARY AND IS SUBJECT TO CHANGE WITHOUT NOTICE. IT IS NOT TO BE COPIED OR TRANSMITTED.