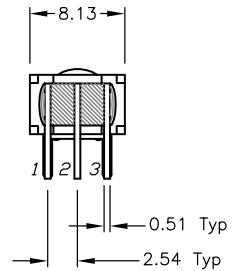
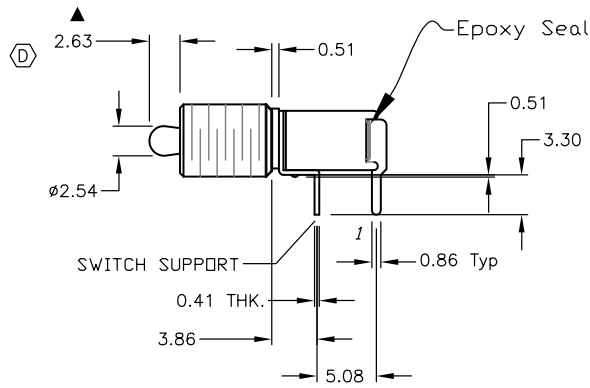
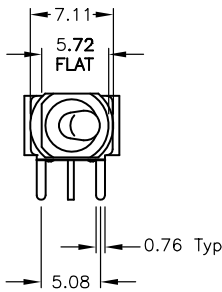
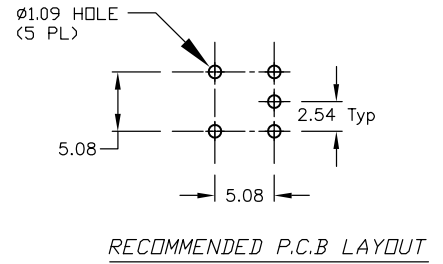
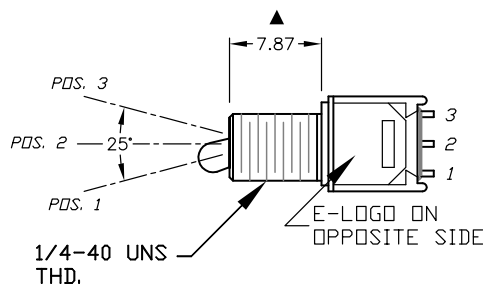


SWITCH FUNCTION		
PDS. 1	PDS. 2	PDS. 3
ON	NONE	ON
2-3	OPEN	2-1



NOTES:

- ALL DIMENSIONS IN MM
- GENERAL TOLERANCE: X.X=±0.4
X.XX=±0.25
- TERM. NOS. FOR REF. ONLY
- CONTACT RATING: 3A@ 120VAC. OR 28VDC:
1A@ 250VAC.
- ▲ FIXED TERMINAL & MOVING CONTACT: Cu alloy w/ Silver plate
- ELECTRIC LIFE: 30,000 make-and-break cycles at full load.
- INSULATION RESISTANCE: 1,000 M ohm min.
- DIELECTRIC STRENGTH: 1,000 V rms @sea level.
- OPERATING TEMP.: -30°C to 85°C
- ▲ DENOTES CRITICAL PARAMETER.

D	13450	DIM 2.64 WAS 3.04	9/16/03	AR
C	13430	DIM 3.04 WAS 2.84	9/8/03	AR
B	13412	CORRECT ACTUATOR LENGTH	8/29/03	AR
A	13178	RELEASED FOR PRODUCTION	6/4/03	AR
REV.	ECN No.	DESCRIPTION	DATE	CHKD

THE INFORMATION CONTAINED IN THIS DOCUMENT IS PROPRIETARY TO E-SWITCH AND IS NOT TO BE COPIED OR TRANSFERRED

E-SWITCH®

200MSP1T2B5M6QE

TITLE

SCALE

2:1

DATE

6/4/03

DR

AR

DWG

T211255

REV

D