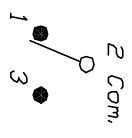


RECOMMENDED P.C.B. LAYOUT



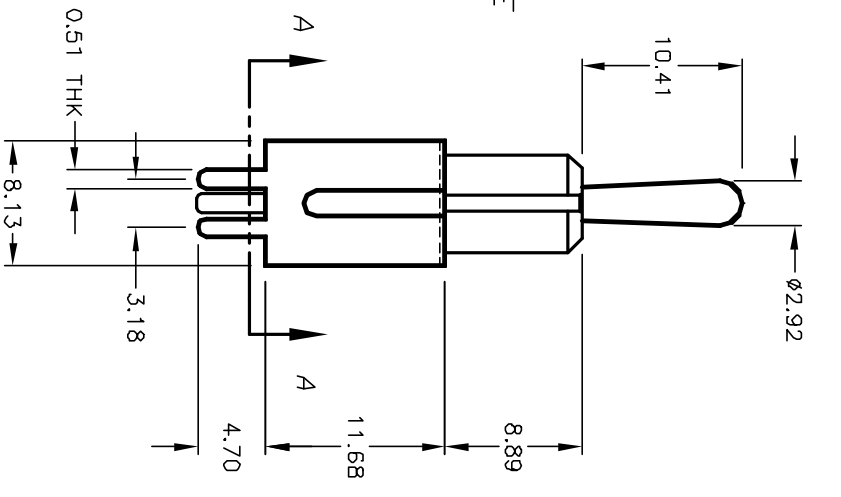
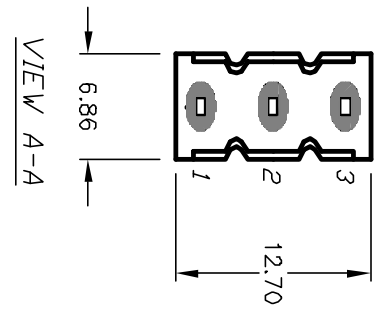
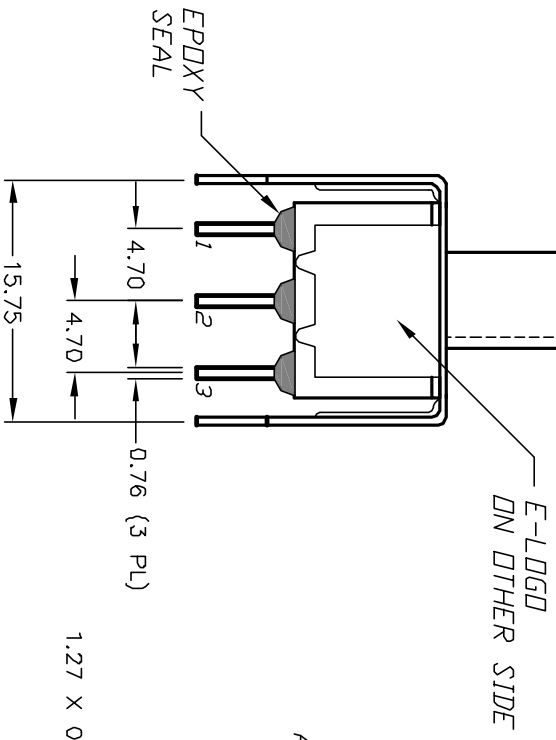
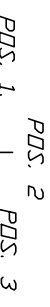
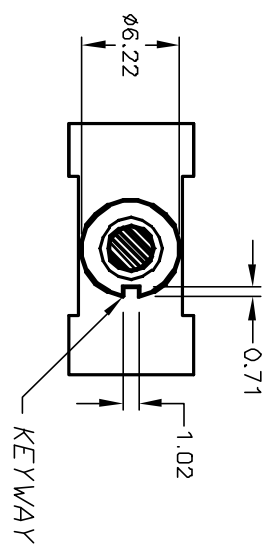
CIRCUIT: SPDT

SWITCH FUNCTION		
POS. 1	POS. 2	POS. 3
(CND)	DEF	(CND)
2-3	OPEN	2-1

() = Momentary

NOTES:

1. ALL DIMENSIONS IN MM [INCH]
2. GENERAL TOLERANCE: X.X=±0.4
X.XX=±0.25
3. TERMINAL NUMBERS FOR REF ONLY
4. RATING: 0.4VA @20V AC or DC max.
5. FIXED TERM. & MOVING CONTACT:
COPPER Alloy w/GOLD plate over
Nickel plate.
6. ELECTRIC LIFE: 50,000 make-and-break cycles
at full load.
7. INSULATION RESISTANCE: 1,000 Mega-ohm min.
8. DIELECTRIC STRENGTH: 1,000 V RMS @sea level.
9. OPERATING TEMP.: -30°C to +85°C



E-SWITCH®

A		12030	RELEASED FOR PRODUCTION	4/12/01	CJB
B		ECN No.	DESCRIPTION	DATE	CHKD
REV.		ECN No.	DESCRIPTION	DATE	CHKD

TITLE		100 SP-4 T1 B2 V22 RE (GOLD)		SCALE	2:1	DATE	--	DR	--	DWG	T114044	REV	A
-------	--	------------------------------	--	-------	-----	------	----	----	----	-----	---------	-----	---

THE INFORMATION CONTAINED IN THIS DOCUMENT IS PROPRIETARY TO E-SWITCH AND IS NOT TO BE COPIED OR TRANSFERRED