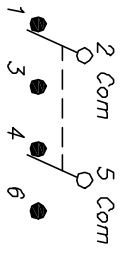
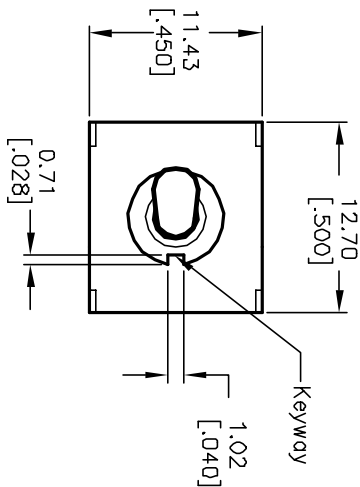


RECOMMENDED P.C.B. LAYOUT
SCALE: 2:1

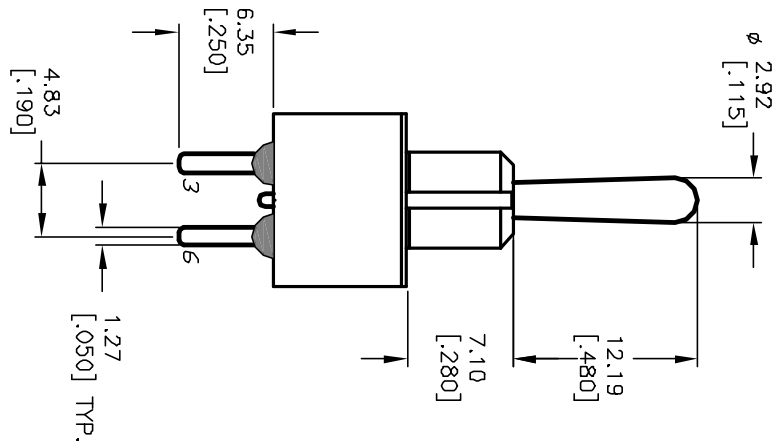
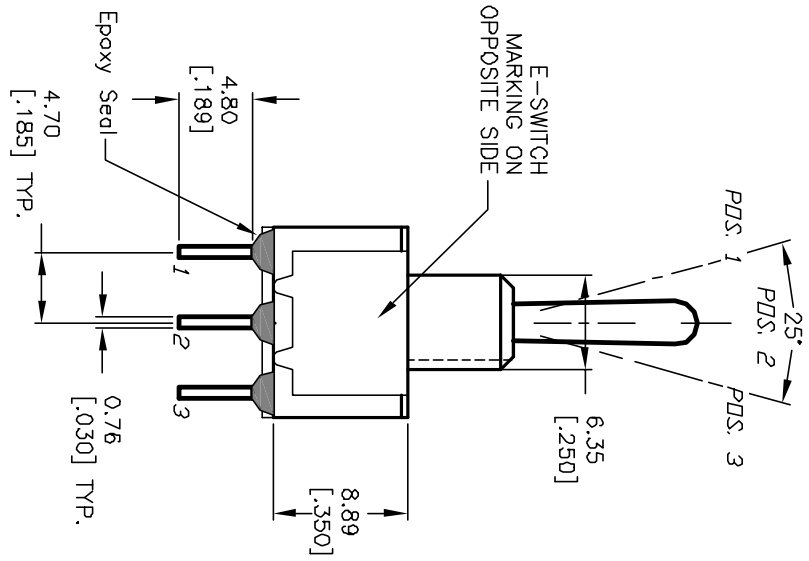


SWITCH FUNCTION	PDS. 1	PDS. 2	PDS. 3
<DN>	DN	DN	DN
<UP>	DN	DN	DN

NOTES:

1. ALL DIMENSIONS IN MM [INCH]
2. GENERAL TOLERANCE: X.X=±0.4
X.XX=±0.25
3. TERM. NOS. FOR REF. ONLY
4. RATING: 5A @120VAC OR 28VDC
2A @250VAC
5. MATERIALS: FIXED TERM. & MOVING CONTACT:
Copper Alloy W/Silver plate.
6. ELECTRICAL LIFE: 50,000 make-and-break
cycles at full load.
7. INSULATION RESISTANCE: 1,000M ohm min.
8. DIELECTRIC STRENGTH: 1000V RMS @sea level
9. OPERATING TEMP.: -30°C to 85°C

< >=Momentary



E-SWITCH®

REV.	ECN No.	DESCRIPTION	DATE	CHKD
A	12399	RELEASED FOR PRODUCTION	9/3/02	CJB

TITLE	SCALE	DATE	DR	DWG	REV
100 DP-4 T1 B4 M2 Q E	2:1	7/20/01	CJB	T124015	A

THE INFORMATION CONTAINED IN THIS DOCUMENT IS PROPRIETARY TO E-SWITCH AND IS NOT TO BE COPIED OR TRANSMITTED