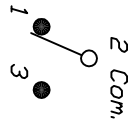


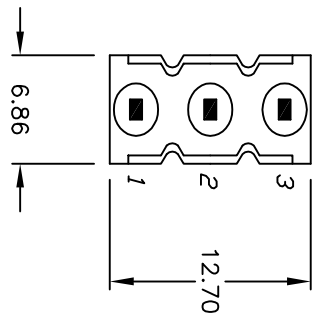
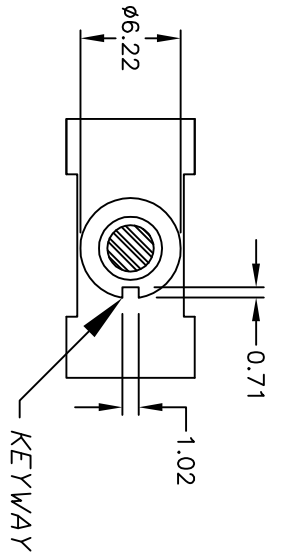
RECOMMENDED P.C.B. LAYOUT

SWITCH FUNCTION		
POS. 1	POS. 2	POS. 3
DN	OFF	(ON)
2-3	OPEN	2-1

() = Momentary

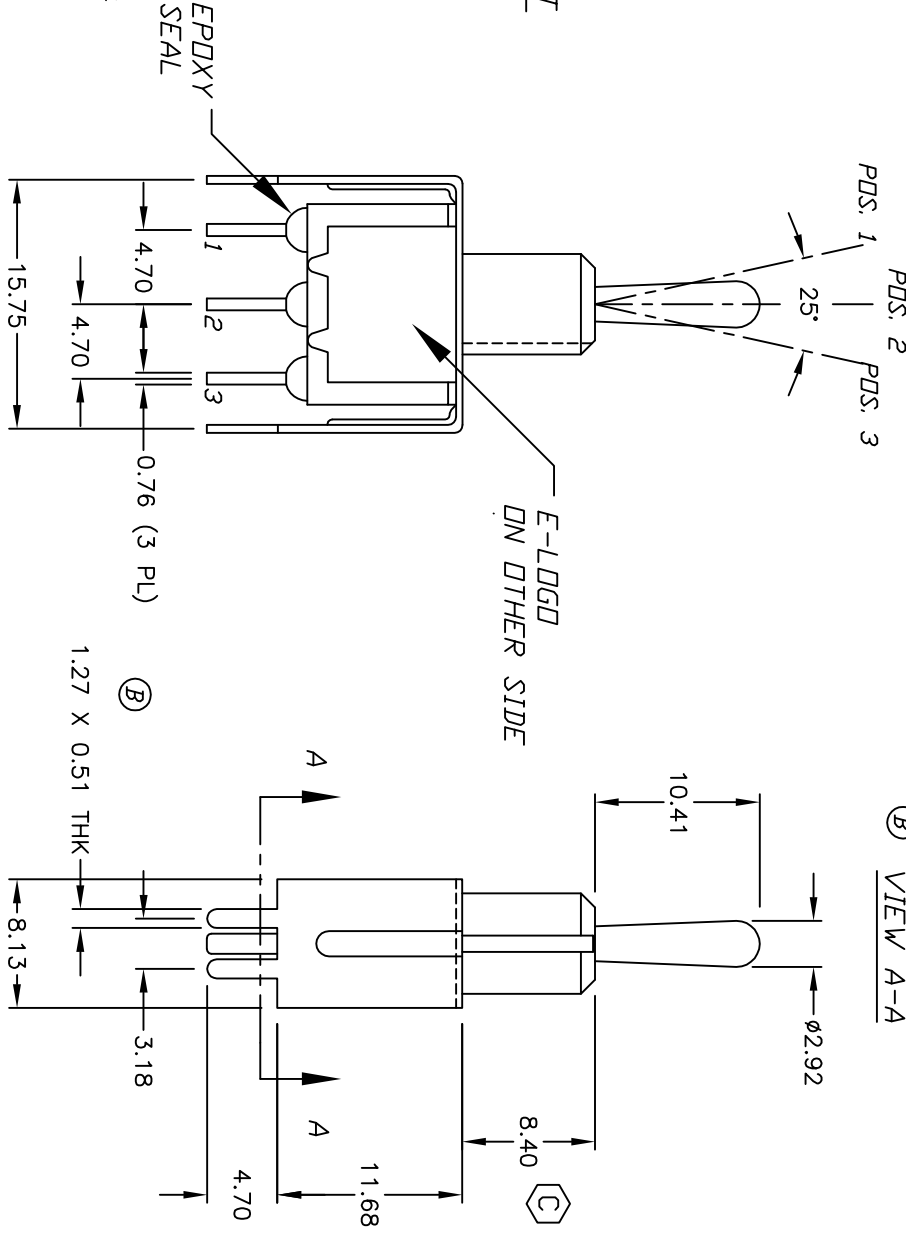


CIRCUIT: SPDT



(B) VIEW A-A

- NOTES:
1. ALL DIMENSIONS IN MM
 2. GENERAL TOLERANCE: X.X=±0.4
X.XX=±0.25
 3. TERM. NOS. FOR REF. ONLY
 4. RATING: 5A @120VAC OR 28VDC
2A @250VAC w/Resistive loads
 5. FIXED TERM. & MOVING CONTACT:
Copper alloy w/SILVER plate
 6. ELECTRICAL LIFE: 50,000 make-and-break cycles at full load.
 7. INSULATION RESISTANCE: 1000M ohm min.
 8. DIELECTRIC STRENGTH: 1000V RMS min. @sea level.
 9. OPERATING TEMP.: -30°C to +85°C
 10. 2002/95/EC (ROHS) COMPLIANT



REV.	ECN NO.	DESCRIPTION	DATE	CHKD
C	18762	DIM FOR BUSHING HEIGHT UPDATED	1/11/10	BLR
B	12030	REVISED & REDRAWN	4/2/02	CJB
A	10724	RELEASED FOR PRODUCTION	7/3/03	GLG

TITLE		SCALE	DATE	DR	DWG	REV
100 SP-5 T1 B2 VS2 Q E		2:1	1/11/10	BLR	T114999	C

