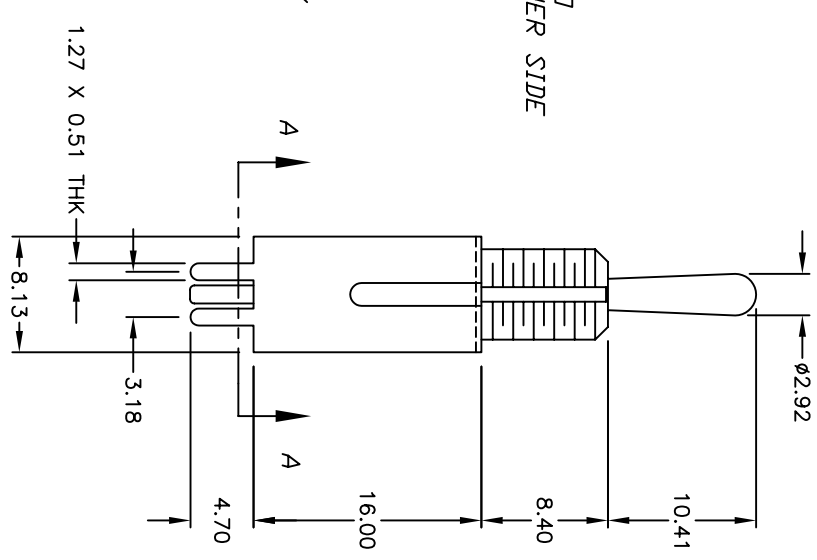
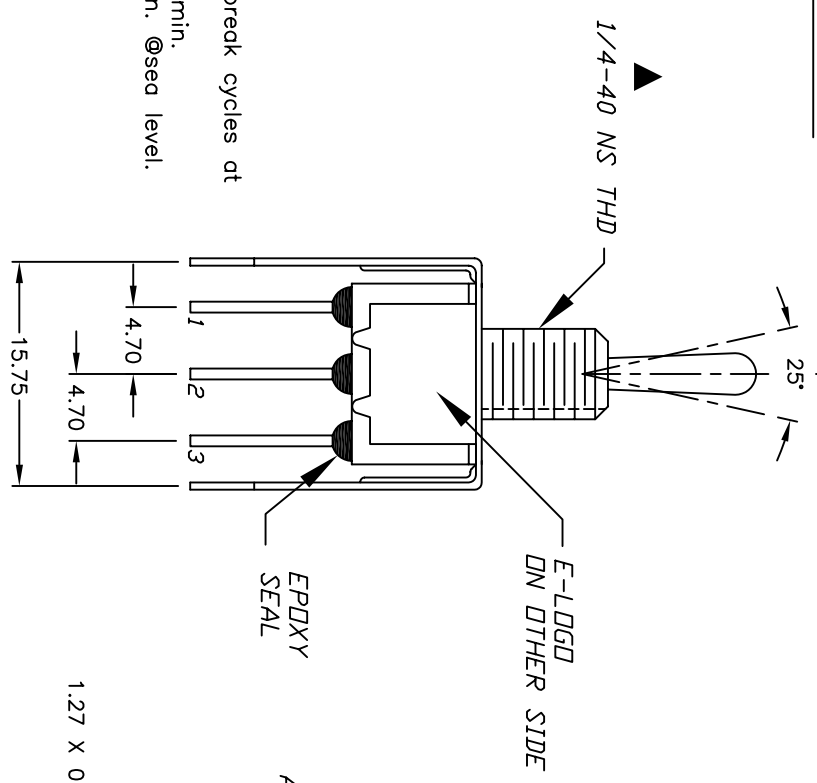
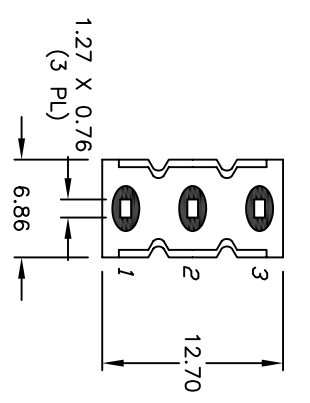
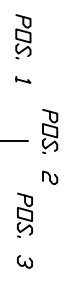
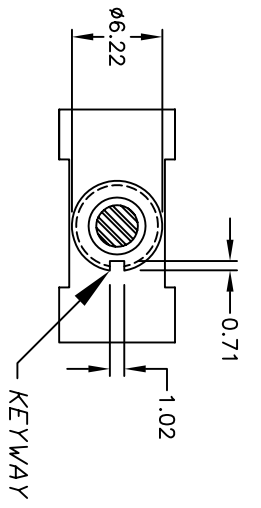


SWITCH FUNCTION			
PDS. 1	PDS. 2	PDS. 3	
DN	DN	DN	
DN	NONE	DN	
2-3	OPEN	2-1	

NOTES:

1. ALL DIMENSIONS IN MM
2. GENERAL TOLERANCE: X.X=±0.4
X.XX=±0.25
3. TERM. NOS. FOR REF. ONLY
4. RATING: 5A @120VAC OR 28VDC
2A @250VAC w/Resistive loads
5. FIXED TERM. & MOVING CONTACT:
Copper alloy w/SILVER plate
6. ELECTRICAL LIFE: 50,000 make-and-break cycles at full load.
7. INSULATION RESISTANCE: 1000M ohm min.
8. DIELECTRIC STRENGTH: 1000V RMS min. @sea level.
9. OPERATING TEMP.: -30°C to +85°C
10. 2002/95/EC (ROHS) COMPLIANT
11. HARDWARE TO BE SUPPLIED BULK:
T100011-LOCK WASHER QTY-1
T100015-LOCK RING QTY-1
T100000-HEX NUT QTY-2



REV.	ECN NO.	DESCRIPTION	DATE	CHKD
C	15875	EDIT DIMENSION	3/17/06	PH
B	15538	DIM FROM 8.89 TO 8.40	11/16/05	PH
A	15491	RELEASED FOR PRODUCTION	11/2/05	PH

TITLE		SCALE	DATE	DR	DWG	REV
100 SP-1 T1 B1 VS3 Q EH		2:1	11/2/05	CB	ST110021	C

