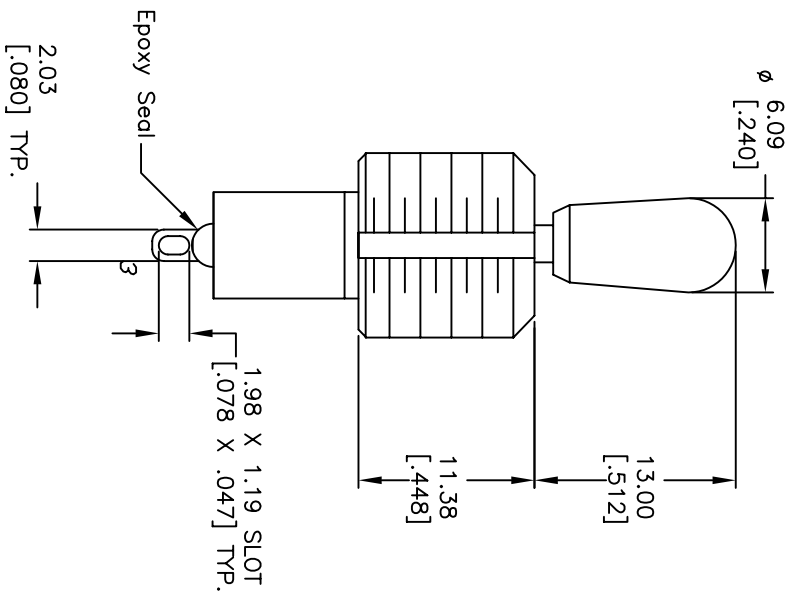
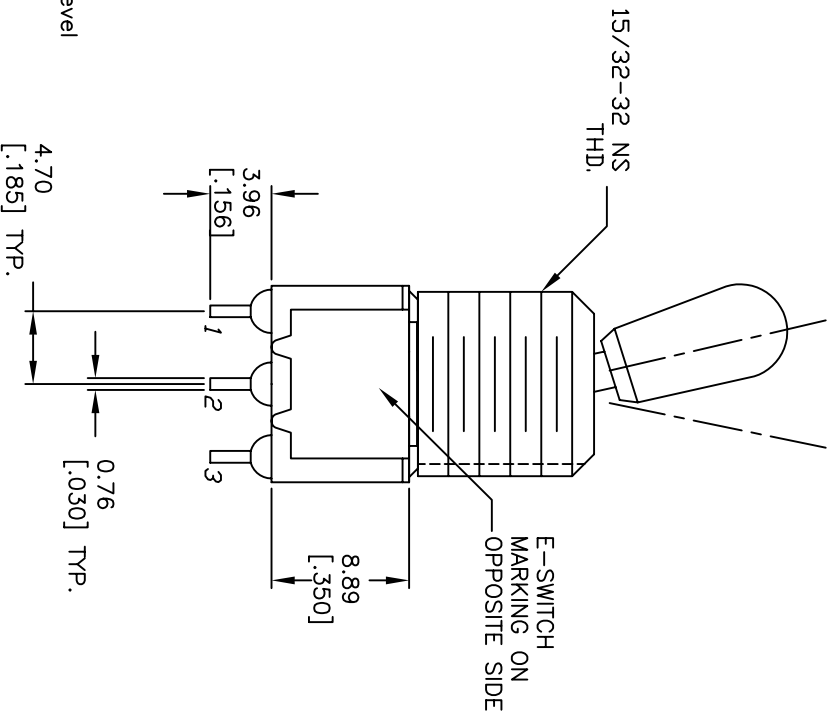


CIRCUIT: SPDT

SWITCH FUNCTION		
PDS. 1	PDS. 2	PDS. 3
DN	DN	DN
2-3	OPEN	2-1

PDS. 1 PDS. 2



NOTES:

1. ALL DIMENSIONS IN MM [INCH]
2. GENERAL TOLERANCE: X.X=±0.4  
X.XX=±0.25
3. TERM. NOS. FOR REF. ONLY
4. RATING: 5A @120VAC OR 28VDC;  
2A @250VAC
5. FIXED TERM. & MOVING CONTACT;  
Copper ALLOY W/Silver plate.
6. ELECTRICAL LIFE: 50,000 make-and-break  
cycles at full load.
7. INSULATION RESISTANCE: 1,000M ohm min.
8. DIELECTRIC STRENGTH: 1000V RMS @sea level
9. OPERATING TEMP.: -30°C to 85°C
10. 2002/95/EC (ROHS) COMPLIANT  
HARDWARE TO BE SUPPLIED BULK:
11. T100012-LOCK WASHER QTY-1  
T100003-LOCK RING QTY-1  
T100004-HEX NUT QTY-2

**E-SWITCH®**

100 SP-1 T7 B13 M1 Q EH

REV.	ECN No.	DESCRIPTION	DATE	CHKD
A	15519	RELEASED FOR PRODUCTION	11/10/05	PH

THE INFORMATION CONTAINED IN THIS DOCUMENT IS PROPRIETARY TO E-SWITCH AND IS NOT TO BE COPIED OR TRANSFERRED

TITLE	SCALE	DATE	DR	DWG	REV
100 SP-1 T7 B13 M1 Q EH	2:1	11/10/05	PH	ST111082	A