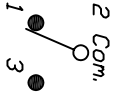


RECOMMENDED PCB LAYOUT

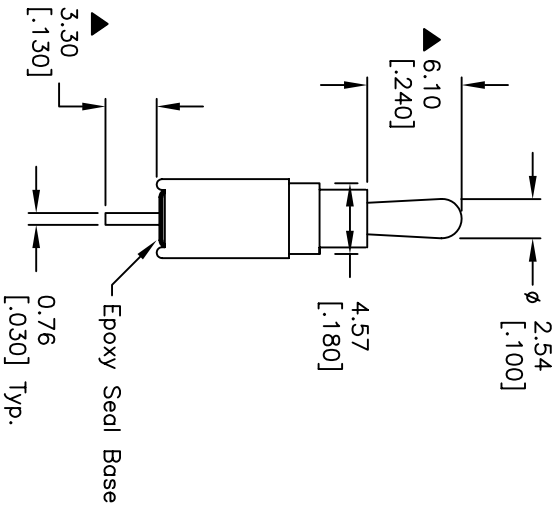
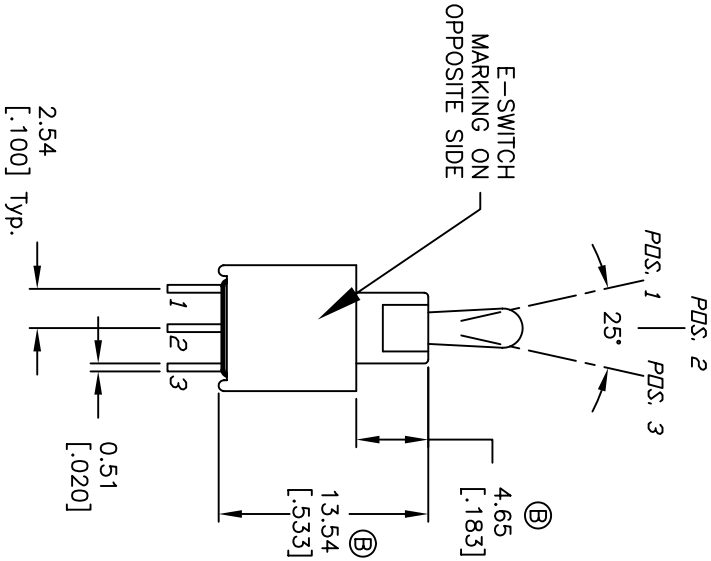
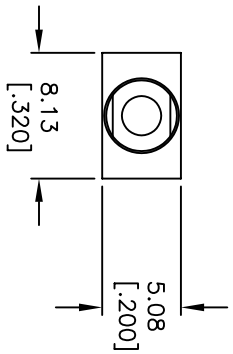


CIRCUIT: SPDT
CONTACT CONFIGURATION

SWITCH FUNCTION		
PDS: 1	PDS: 2	PDS: 3
DN	DFF	DN
2-3	OPEN	2-1

NOTES:

1. ALL DIMENSIONS IN MM [INCH]
2. GENERAL TOLERANCE: X.X=±0.4
X.XX=±0.25
3. TERMINAL NUMBERS FOR REF ONLY
4. RATING: 3A @120V AC or 28VDC;
1A @250VAC.
5. FIXED TERM. & MOVING CONTACT:
Copper ALLOY W/Silver plate.
6. MECHANICAL LIFE: 30,000 make-and-break cycles
at full load.
7. CONTACT RESISTANCE: 20 MILLE-OHM MAX.
8. INSULATION RESISTANCE: 1,000 Mega-ohm min.
9. DIELECTRIC STRENGTH: 1,000 V RMS @sea level.
10. OPERATING TEMP.: -30°C to +85°C
11. ▲ DENOTES CRITICAL PARAMETER.
12. 2002/95/EC (ROHS) COMPLIANT



B	17922	CORRECT 2 DIMENSIONS	1/15/08	BLR
A	12200	RELEASED FOR PRODUCTION	5/31/02	CB

REV.	ECN No.	DESCRIPTION	DATE	CHKD
THE INFORMATION CONTAINED IN THIS DOCUMENT IS PROPRIETARY TO E-SWITCH AND IS NOT TO BE COPIED OR TRANSFERRED				

E • SWITCH™

TITLE		SCALE		DATE	DR	DWG	REV
2004 WMSP-3 T2 A1 M2 Q E		2:1		1/15/08	BLR	T201302	B