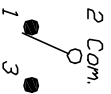


RECOMMENDED PCB LAYOUT

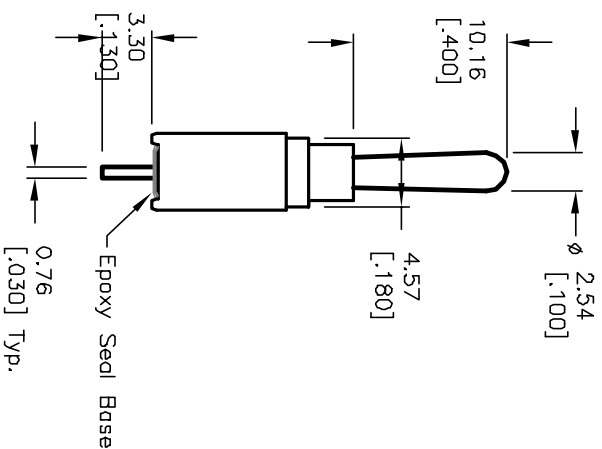
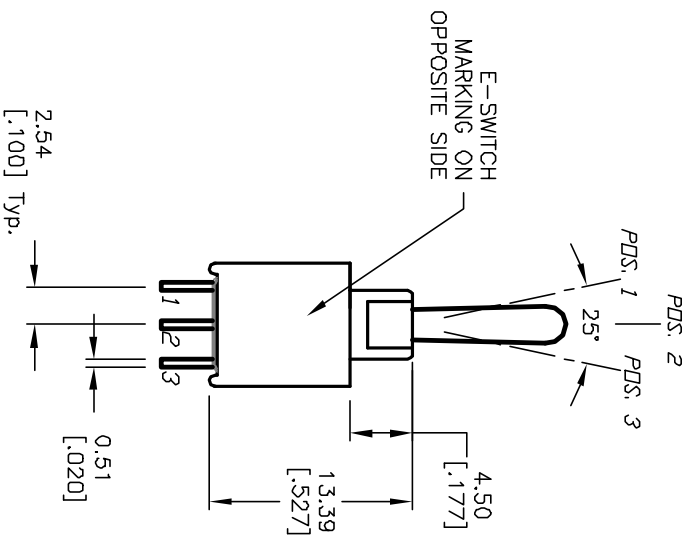
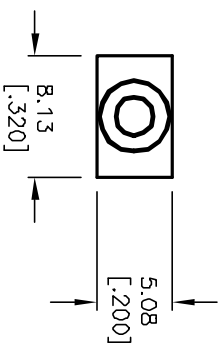


CIRCUIT: SPDT CONTACT CONFIGURATION

SWITCH FUNCTION		
PDS. 1	PDS. 2	PDS. 3
DN	DFF	DN
2-3	DPEN	2-1

NOTES:

1. ALL DIMENSIONS IN MM [INCH]
2. GENERAL TOLERANCE: X.X=±0.4
X.XX=±0.25
3. TERMINAL NUMBERS FOR REF ONLY
4. RATING: 3A @120V AC or 28VDC;
1A @250VAC;
5. FIXED TERM. & MOVING CONTACT:
Copper ALLOY W/Silver plate.
6. ELECTRIC LIFE: 50,000 make-and-break cycles
at full load.
7. INSULATION RESISTANCE: 1,000 Mega-ohm min.
8. DIELECTRIC STRENGTH: 1,000 V RMS @sea level.
9. OPERATING TEMP.: -30°C to +85°C



E-SWITCH®

2004 WMSP-3 T1 A1 M2 Q E

REV.	ECN NO.	DESCRIPTION	DATE	CHK'D
D	12200	REVISED AND REDRAWN	5/31/02	CB

TITLE	SCALE	DATE	DR	DWG	REV
2004 WMSP-3 T1 A1 M2 Q E	2:1	5/31/02	CB	T201206	D

THE INFORMATION CONTAINED IN THIS DOCUMENT IS PREPARED FOR E-SWITCH AND IS NOT TO BE COPIED OR TRANSMITTED