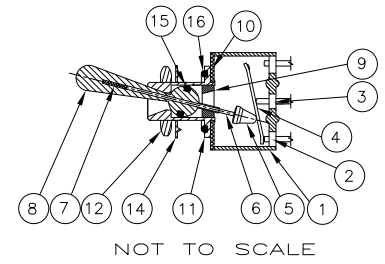


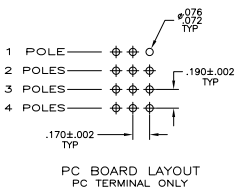
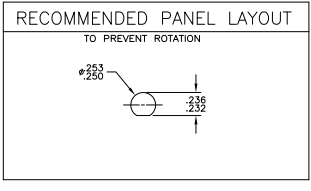
THIS DRAWING IS UNPUBLISHED
 ALL RIGHTS RESERVED

REV	DATE	DESCRIPTION	BY	APP
AD	00			
CS		REVISED PER ECO-11-005566		OTW/11 [PSK] MW

Materials			
No.	Component name	Base material	Finish
1	Housing	High Temp., UL 94V-0, green	
2	End terminal	silver clad copper alloy	5 microinches min. gold
3	Center terminal	copper alloy	5 microinches min. gold
4	Rocker contact	silver clad copper alloy	5 microinches min. gold
5	Actuator	Phenol resin, UL94 HB, black	
6	Plunger	stainless steel	
7	Spring	music wire	
8	Toggle	brass	chrome or Nickel
9	Retainer	Polyamide, UL94 HB, black	
10	Frame	cold rolled steel	zinc or Nickel
11	Bushing	brass	100 microinches min. nickel over 10 microinches min. copper
12	Mounting nut (1)	brass	200 microinches min. bright nickel
14	Internal tooth lockwasher	steel	zinc or Nickel
15	O-Ring, toggle seal		
16	O-Ring, panel seal		



Specifications-see note 3			
Current rating UL & CSA	6A @ 125 VAC (resistive)		
	3A @ 250 VAC (resistive)		
	4A @ 28 VDC (resistive)		
Termination resistance	20 milliohms max @ 2-4 VDC, 1A		
Insulation resistance	1,000 megohms min.		
Withstanding voltage	1,000 VAC		
Travel	24 +/- 6 degrees		
Actuation force	.05 to 1.5 kgf		
Operating temperature	-20C to +85C		
Storage temperature	-40C to +85C		
Contact timing	break before make		
Terminal seal	epoxy or insert molded		
Durability	Parameter	2 Position	3 Position
	mechanical (no load)	150,000	100,000
	250 VAC (3A resistive)	80,000	60,000
	125 VAC (6A resistive)	80,000	60,000
28 VDC (4A resistive)	60,000	50,000	40,000



- NOTES:
- TERMINAL NUMBERS ARE FOR REFERENCE ONLY AND DO NOT APPEAR ON THE SWITCHES.
 - EACH SWITCH SUPPLIED WITH THE FOLLOWING MOUNTING HARDWARE:
 (2) 1/4-40 UNS-2B HEX NUTS
 (1) INTERNAL TOOTH LOCKWASHER
 (1) LOCATING RING
 - WIRE LUG CONTACTS WILL ACCEPT 2 #20 AWG SOLID OR STRANDED WIRES.
 - CUSTOMER INSTALLED EXTERNAL JUMPER BETWEEN TERMINALS 2 AND 4 REQUIRED FOR 1 POLE 3 THROW FUNCTION.
- OBSELETE

Part Number	Alco Model	Poles	Throws	Function	Terminal	Terminal Diagram	Comments
8-1437558-1	MTE406P	4	2	ON OFF ON	Wire lug		2-3, 5-6, 8-9, 11-12
8-1437558-0	MTE406N	4	2	ON ON	Wire lug		Off
7-1437558-9	MTE306E	3	2	ON OFF ON	Wire lug		2-1, 5-4, 8-7
7-1437558-8	MTE306D	3	2	ON ON	Wire lug		Off
7-1437558-7	MTE206T	2	2	ON OFF (ON)	Wire lug		2-3, 5-6
7-1437558-6	MTE206S	2	2	(ON) OFF (ON)	Wire lug		Off
7-1437558-5	MTE206R	2	2	ON (ON)	Wire lug		2-3, 5-6
7-1437558-4	MTE206PA	1	3	ON ON ON	Wire lug		5-6
7-1437558-3	MTE206P	2	2	ON OFF ON	Wire lug		5-3
7-1437558-2	MTE206N	2	2	ON ON	Wire lug		2-3
7-1437558-1	MTE106G	1	2	(ON) OFF (ON)	Wire lug		Off
7-1437558-0	MTE106F	1	2	ON (ON)	Wire lug		2-3
6-1437558-9	MTE106E	1	2	ON OFF ON	Wire lug		Off
6-1437558-8	MTE106D	1	2	ON ON	Wire lug		2-3

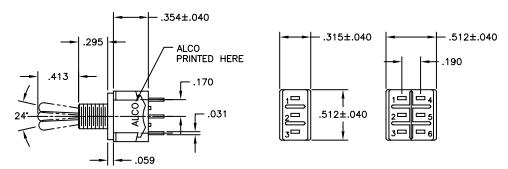
THIS DRAWING IS A CONTROLLED DOCUMENT.

TE Connectivity
 TOGGLE SWITCH, MTE SERIES
 VERTICAL MOUNT

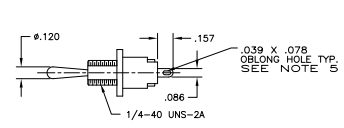
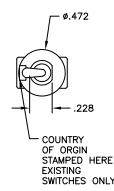
DATE: 00779
 SIZE: 2:1
 SHEET: 1 OF 3

THIS DRAWING IS UNPUBLISHED
 ALL RIGHTS RESERVED

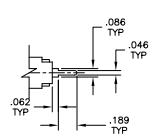
REVISES		DATE	BY	APP'D
AD	00			



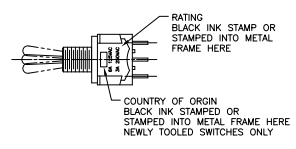
MTE-106 MTE-206



WIRE LUG TERMINAL



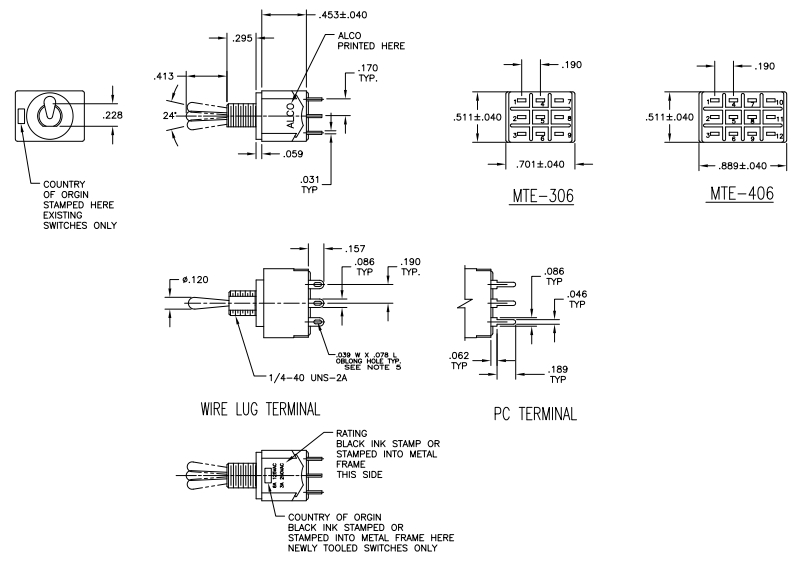
PC TERMINAL



THIS DRAWING IS A CONTROLLED DOCUMENT.		BY: RENDER	GROUP: CONNECT	TE Connectivity
CHECKED: RENDER		BY: RENDER	GROUP: CONNECT	
DESIGNED: RENDER		BY: RENDER	GROUP: CONNECT	TOGGLE SWITCH, MTE SERIES VERTICAL MOUNT
DRAWN: RENDER		BY: RENDER	GROUP: CONNECT	
DATE: 10/11/01		SIZE: A1	DATE: 10/11/01	REVISION: 0
PROJECT: 00779		DATE: 10/11/01	SIZE: 2 1/2	BY: RENDER
CUSTOMER DRAWING				

THIS DRAWING IS UNPUBLISHED
 ALL RIGHTS RESERVED

REV	DATE	DESCRIPTION	BY	APP
AD	00	SEE SHEET 1	-	-



THIS DRAWING IS A CONTROLLED DOCUMENT.		BY: TE	DATE: 2-1	REV: 3	APP: CA
DESIGNER: TE	ENGINEER: TE	DATE: 2-1	REV: 3	APP: CA	
CUSTOMER DRAWING		TE Connectivity			
TOGGLE SWITCH, MTE SERIES VERTICAL MOUNT		A1 00779 6-1437558-8			