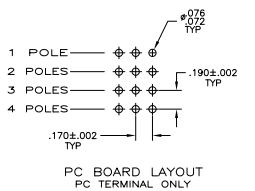
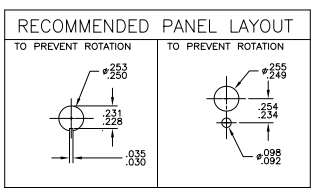
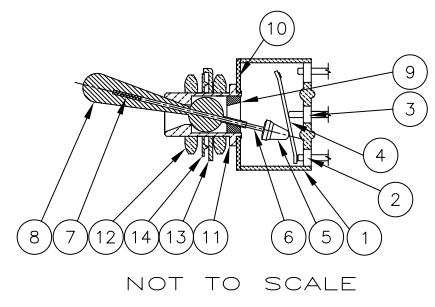


THIS DRAWING IS UNAPPROVED FOR FABRICATION
 ALL RIGHTS RESERVED

REV	DATE	DESCRIPTION	BY	APP
AD	00	REVISED PER EDD-11-005556	OTMMR11	PSK/MW

ID.	COMPONENT NAME	MATERIALS	FINISH
1	Housing	Epoxy Resin, UL94 V-0, Green or Blue	
2	End terminal	silver clad copper alloy	5 microinches min. gold
3	Center terminal	copper alloy	5 microinches min. gold
4	Rocker contact	silver clad copper alloy	5 microinches min. gold
5	Actuator	Phenol resin, UL94 HB, black	
6	Plunger	stainless steel	
7	Spring	music wire	
8	Toggle	brass	chrome or nickel
9	Retainer	Polyamide, UL94 HB, black	
10	Frame	cold rolled steel	zinc or nickel
11	Bushing	brass	100 microinches min. nickel over 10 microinches min. copper
12	Mounting nuts (2)	brass	200 microinches min. bright nickel
13	Locating ring	cold rolled steel	zinc or nickel
14	Internal tooth lockwasher	steel	zinc or nickel

SPECIFICATIONS—SEE NOTE 3			
CURRENT RATING UL & CSA	6A @ 125 VAC (resistive) 3A @ 250 VAC (resistive) 4A @ 28 VDC (resistive)		
TERMINATION RESISTANCE	20 milliohms max @ 2-4 VDC, 1A		
INSULATION RESISTANCE	1,000 megohms min.		
WITHSTANDING VOLTAGE	1,000 VAC		
TRAVEL	24 +/- 6 degrees		
ACTUATION FORCE	.05 to 1.5 kgf		
OPERATING TEMPERATURE	-20C to +85C		
STORAGE TEMPERATURE	-40C to +85C		
CONTACT TRIP	break before make		
TERMINAL SEAL	epoxy or insert molded		
DURABILITY	PARAMETER	2 POSITION	3 POSITION
	mechanical (no load)	150,000	100,000
	250 VAC (3A resistive)	80,000	60,000
	125 VAC (6A resistive)	80,000	60,000
	28 VDC (4A resistive)	60,000	50,000



PART NUMBER	ALCO MODEL	POLES	THROWS	FUNCTION	TERMINAL	ALCO	ALCO	ALCO	COMMENTS
5-1437559-4	MTM406NPC	4	2	ON ON	PC	3 2 1 6 5 4 9 8 7	12 11 10	12 11 10	
5-1437559-3	MTM306DPC	3	2	ON ON	PC	2-3, 5-6, 8-9	---	2-1, 5-4, 8-7	
5-1437559-2	MTM206SPC	2	2	(ON) OFF (ON)	PC	2-3, 5-6	OFF	2-1, 5-4	
5-1437559-1	MTM206PPC	2	2	ON OFF ON	PC	2-3, 5-6	OFF	2-1, 5-4	
5-1437559-0	MTM206PAPC	1	3	ON ON ON	PC	5-6	5-3	5-1	note 5
4-1437559-9	MTM206NPC	2	2	ON ON	PC	2-3, 5-6	---	2-1, 5-4	
4-1437559-8	MTM106FPC	1	2	ON (ON)	PC	2-3	---	2-1	
4-1437559-7	MTM106EPC	1	2	ON OFF ON	PC	2-3	Off	2-1	
4-1437559-6	MTM106DPC	1	2	ON ON	PC	2-3	---	2-1	

- PER SPEC 202-37
- NOTES:
- TERMINAL NUMBERS ARE FOR REFERENCE ONLY AND DO NOT APPEAR ON THE SWITCHES.
 - EACH SWITCH SUPPLIED WITH THE FOLLOWING MOUNTING HARDWARE:
 - (2) 1/4-40 UNS-2B HEX NUTS
 - (1) INTERNAL TOOTH LOCKWASHER
 - (1) LOCATING RING
5. CUSTOMER INSTALLED EXTERNAL JUMPER BETWEEN TERMINALS 2 AND 4 REQUIRED FOR 1 POLE 3 THROW FUNCTION.
- ⚠ OBSOLETE

THIS DRAWING IS A CONTROLLED DOCUMENT.

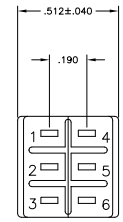
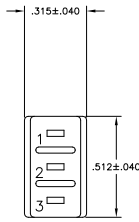
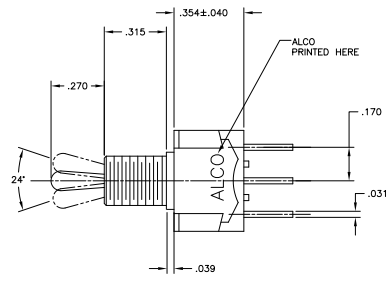
TE Connectivity

TOGGLE SWITCH, MTM SERIES
VERTICAL MOUNT

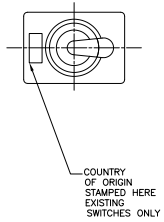
SIZE: 4.1 INCHES
DATE: 11/13/02
DRAWING NO: 4-1437559-9
REVISED TO: E2

THIS DRAWING IS UNPUBLISHED
 ALL RIGHTS RESERVED

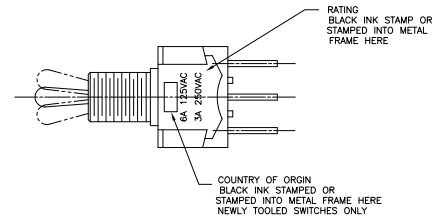
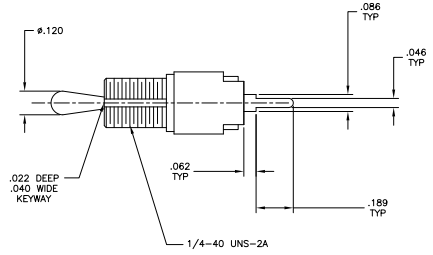
REV	DATE	DESCRIPTION	BY	APP
AD	00	SEE SHEET 1	-	-



MTM-106 MTM-206



COUNTRY OF ORIGIN STAMPED HERE EXISTING SWITCHES ONLY

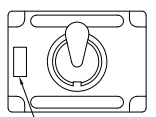


COUNTRY OF ORIGIN BLACK INK STAMPED OR STAMPED INTO METAL FRAME HERE NEWLY TOOLED SWITCHES ONLY

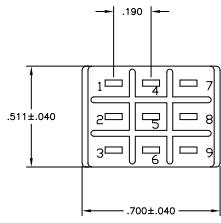
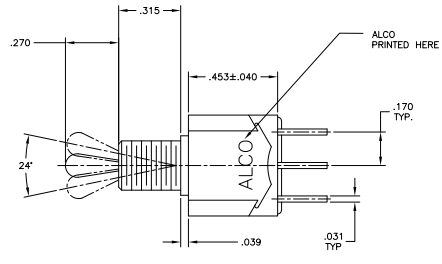
THIS DRAWING IS A CONTROLLED DOCUMENT.		REV	DATE	DESCRIPTION	BY	APP
UNLESS OTHERWISE SPECIFIED:	UNLESS OTHERWISE SPECIFIED:	DATE	DATE	DATE	DATE	DATE
1. DIMENSIONS	2. FINISHES	3. MATERIALS	4. TOLERANCES	5. SURFACE TREATMENT	6. COATING	7. OTHER
1. DIMENSIONS	2. FINISHES	3. MATERIALS	4. TOLERANCES	5. SURFACE TREATMENT	6. COATING	7. OTHER
CUSTOMER DRAWING		REV	DATE	DESCRIPTION	BY	APP
CUSTOMER DRAWING		REV	DATE	DESCRIPTION	BY	APP

THIS DRAWING IS UNPUBLISHED
 ALL RIGHTS RESERVED

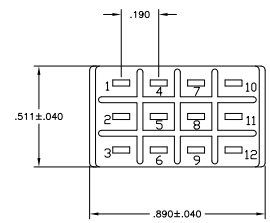
REV. NO.		REVISIONS	
REV.	DATE	DESCRIPTION	BY
AD	00	SEE SHEET 1	



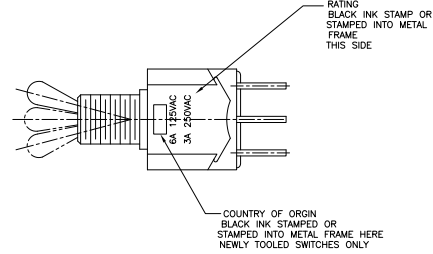
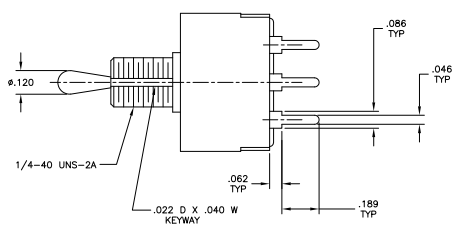
COUNTRY OF ORIGIN STAMPED HERE EXISTING SWITCHES ONLY



MTM-306



MTM-406



THIS DRAWING IS A CONTROLLED DOCUMENT.		REV. NUMBER	REVISED	TE TE Connectivity
WORKS		REV. DATE	REVISED DATE	
	APPROVED	DESIGNED	DATE	TOGGLE SWITCH, MTM SERIES VERTICAL MOUNT
	DRAWN	CHECKED		
	ISSUED	DATE		
CUSTOMER DRAWING			A1	00779
			SIZE	4.1
			SHEET	3
			OF	3