

CATALOG LISTING
4TL1 SERIES
CHART 2

ISSUE
31

REVISIONS
A CO-8850
26 JUN 95
B CO9262
5 MAR 98
C CO-9262
23 NOV 99

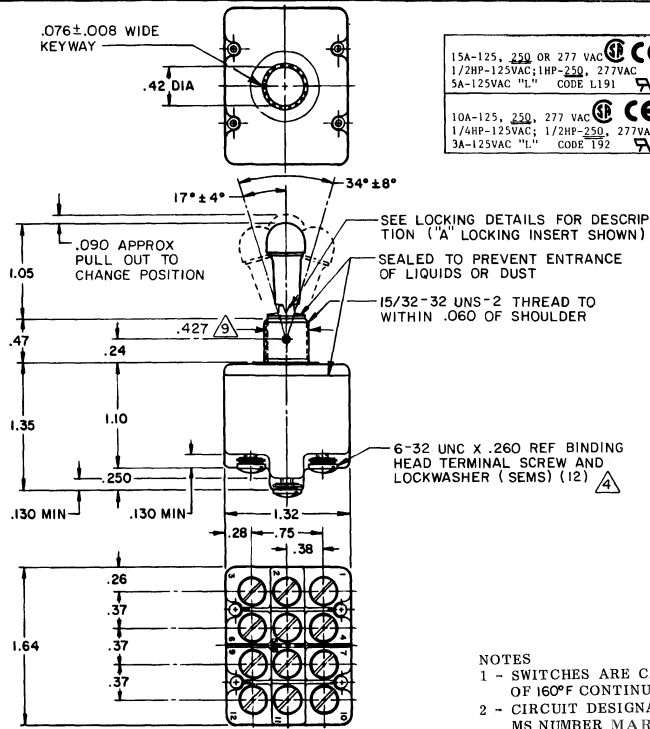
FORMTEK
DRAWN
WJM
7 DEC 82
CHECK
WJM
19 DEC 82

MICRO SWITCH
FREMONT ILLINOIS U.S.A.
A DIVISION OF HONEYWELL
FED. MFG. CODE 91228

SWITCH - TOGGLE

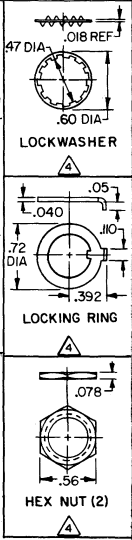
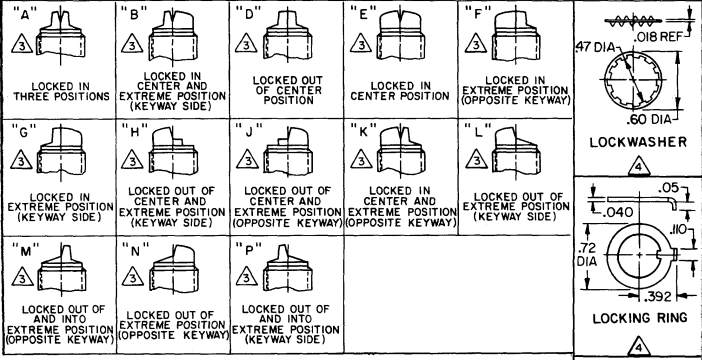
CATALOG LISTING
4TL1 SERIES
CHART 2

THIS DRAWING COVERS A PROPRIETARY ITEM AND IS THE PROPERTY OF MICRO SWITCH, A DIVISION OF HONEYWELL. THIS DRAWING IS NOT TO BE COPIED OR USED WITHOUT THE APPROVAL OF MICRO SWITCH.



15A-125, 250 OR 277 VAC 1/2HP-125VAC; 1HP-250, 277VAC 5A-125VAC "L" CODE L191	UL CE
10A-125, 250, 277 VAC 1/4HP-125VAC; 1/2HP-250, 277VAC 3A-125VAC "L" CODE 192	UL CE

MS NUMBER	CATALOG LISTING	AVAILABLE LOCKING COMBINATIONS FOR CONFIGURATION SEE LETTERING DETAILS	CIRCUIT MADE WITH TOGGLE LEVER IN			MILITARY RATING (AMPS)							
			KEYWAY SIDE (1-2, 4-5) (7-8, 10-11)	CENTER (1-2, 4-5) (7-8, 10-11)	OPPOSITE KEYWAY (2-3, 5-6) (8-9, 11-12)	RESISTIVE LOAD		LAMP LOAD		IND. LOAD			
						DC VOLTS	AC VOLTS	DC VOLTS	AC VOLTS	DC VOLTS	AC VOLTS	DC VOLTS	AC VOLTS
24660-21	4TL1-1	A,B,D,E,F,G,H,K,L,M,NP	ON	OFF	ON								
24660-22	4TL1-2	D, F, G	OFF	NONE	ON								
24660-23	4TL1-3	D, F, G	ON	NONE	ON								
24660-24	4TL1-21	E, F, K, M	NONE	OFF	ON								
24660-33	4TL1-31	E, F, K, M	NONE	ON	ON								
24660-29	4TL1-4	F	MOM OFF	NONE	ON								
24660-31	4TL1-5	E, F, K, L, M, N	MOM ON	OFF	ON								
24660-30	4TL1-6	F	MOM ON	NONE	OFF								
24660-27	4TL1-7	E, L, N	MOM ON	OFF	MOM ON								
24660-26	4TL1-8	F	MOM ON	NONE	ON								
24660-32	4TL1-51	E	NONE	ON	MOM ON								
24660-28	4TL1-61	E	MOM ON	OFF	NONE								



- NOTES
- 1 - SWITCHES ARE CAPABLE OF WITHSTANDING TEMPERATURE OF 160°F CONTINUOUSLY AT FULL RATED LOAD
 - 2 - CIRCUIT DESIGNATION, MICRO SWITCH CATALOG LISTING AND MS NUMBER MARKED ON SIDE OF SWITCH
 - 3 - KEYWAY SHOWN ON LEFT SIDE
 - 4 - FURNISHED UNASSEMBLED
 - 5 - THESE SWITCHES ARE QUALIFIED UNDER MIL-S-3950
 - 6 - FOR TERMINAL COVER SEE MICRO SWITCH CATALOG LISTING 5PA9
 - 7 - SUFFIX LETTER MUST BE ADDED FOR DESIRED TYPE TOGGLE LOCKING
 - 8 - SEE CHART FOR AVAILABLE LOCKING COMBINATIONS
 - 9 - APPLIES ONLY TO "ON" AND "MOM ON" POSITIONS
 - 10 - FROM BOTTOM OF KEYWAY TO MAJOR DIAMETER OF 15/32 THREAD

THIRD ANGLE PROJECTION

SCALE FULL

DO NOT SCALE PRINT

TOLERANCES

APPLY TO DIMENSIONS UNLESS OTHERWISE SPECIFIED

NO. PLACES	FRAC.	DEC.	FRAC.	DEC.
1	1/16	0.0625	1/32	0.03125
2	1/32	0.03125	1/64	0.015625
3	1/64	0.015625	1/128	0.0078125
4	1/128	0.0078125	1/256	0.00390625

DESIGN UNITS: METRIC U.S. CUSTOMARY

WEIGHT