

DK/EK-Series Heavy Duty Toggle Switches



The switch that can handle your heavy duty requirements. Single or double pole with wire lead or screw terminations, and ratings to 20A 125V 10A 250V, the ac/dc DK/EK-Series is the most heavy duty toggle switch in the Carling line. Its sturdy metal construction and stiff actuation force will withstand the abuses of virtually any stringent application. The quick make/quick break contact mechanism is ideal for high voltage DC applications. The DK/EK-Series has long been a staple of the Industrial Motor control and General Purpose market segments.

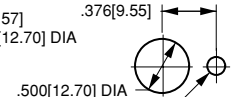
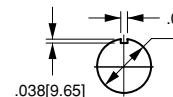
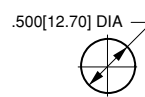
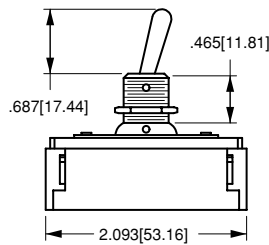
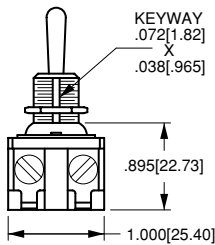
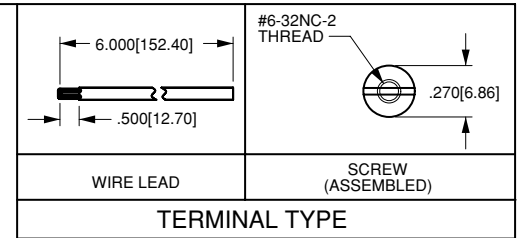
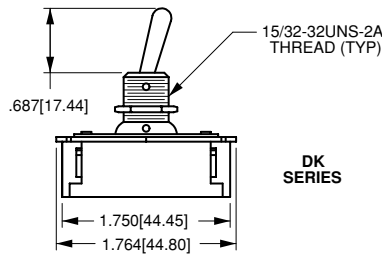
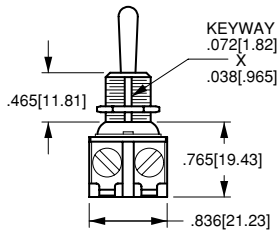
Dielectric Strength
UL/CSA: 1000V - live to dead metal & opposite polarity

Electrical Life
25,000 cycles

Mechanical Life
100,000 cycles

Operating Temperature
0°F to 150°F (-17.8°C to +65.6°C)

DK/EK-Series Dimensional Specifications: in.[mm]



DK284

1
Base Part Number

73

2
Toggle Style

1 BASE PART NUMBER: SERIES/POLES/CIRCUITRY/RATING/TERMINATION

8A 250VAC, 16A 125VAC, 1 HP 125-250VAC
screw term. wire leads

single pole

ON-NONE-OFF **DA284** **DA285**

double pole

ON-NONE-OFF **DK284** **DK285**

10A 250VAC, 20A 125VAC, 1 1/2 HP 125-250VAC
screw term. wire leads

single pole

ON-NONE-OFF **EA204** **EA205**

double pole

ON-NONE-OFF **EK204** **EK205**

2 TOGGLE STYLE¹

unsealed toggle length bushing length

BALL STYLE

32 0.500 0.343

BAT STYLE

73 0.687 0.465

NOTE
1 Additional toggle styles available. Consult factory for details.