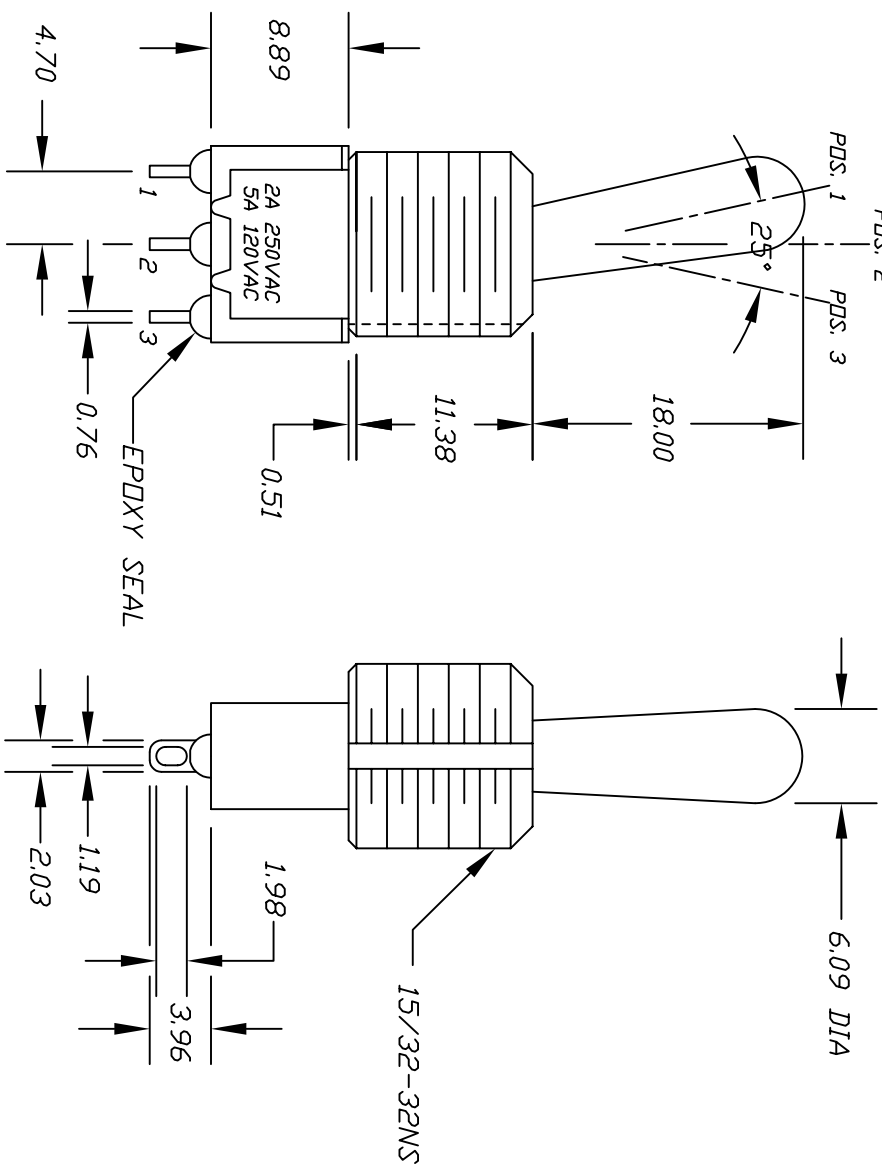
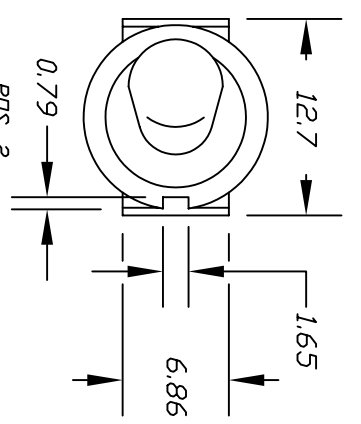


CONTACT CONFIGURATION

SWITCH FUNCTION		
POS. 1	POS. 2	POS. 3
DN	NONE	DN
2-3	OPEN	2-1

NOTES:

- ALL DIMENSIONS IN MM [INCH]
- TERMINAL NUMBERS FOR REDF ONLY
- PLATING MATERIAL: SILVER
- RATING: 5A @ 120VAC DR 28VDC  
2A @ 250VAC
- ELECTRIC LIFE: 40,000 MAKE-AND-BREAK CYCLES AT FULL LOAD
- INSULATION RESISTANCE: 1,000 MEGA-OHM MIN.
- DIELECTRIC STRENGTH: 1,000VRMS @ SEA LEVEL
- OPERATING TEMP: -30°C TO 85°C
- ▲ DENOTES CRITICAL PARAMETER
- 2002/95/EC (ROHS) COMPLIANT
- HARDWARE TO BE SUPPLIED BULK:  
T100012-LOCK WASHER QTY-1  
T100003-LOCK RING QTY-1  
T100004-HEX NUT QTY-2



REV.	ECN NO.	DESCRIPTION	DATE	CHKD
B	16549	FIXED HARDWARE LIST.	10/19/06	TN
A	15511	RELEASED FOR PRODUCTION	11/8/05	PH

THE INFORMATION CONTAINED IN THIS DOCUMENT IS PROPRIETARY TO E-SWITCH AND IS NOT TO BE COPIED OR TRANSFERRED

TOLERANCES

0.0	±0.4
0.00	±0.25

TITLE: 100 SP1 T8 B13 M1 Q EH

SCALE: 2:1

DATE: 11/8/05

DR: PH

DWG: ST111027

REV: B

**E-SWITCH**