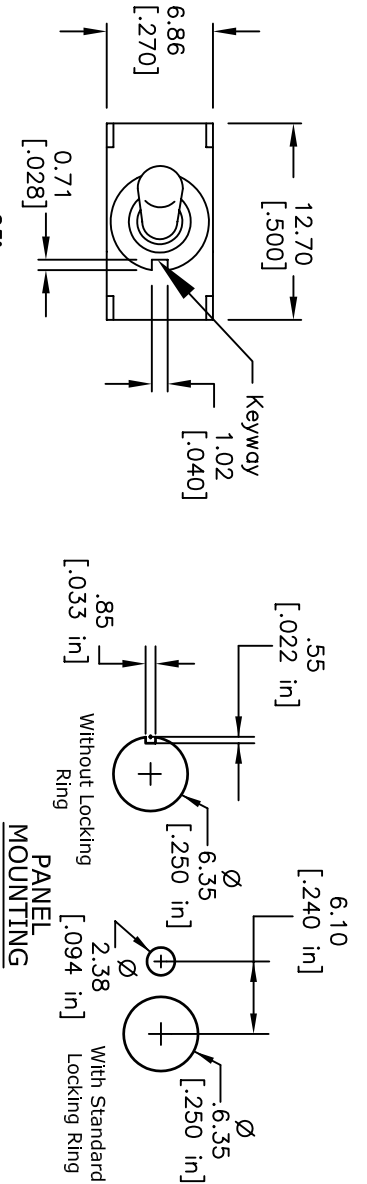
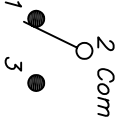


RECOMMENDED P.C.B. LAYOUT



SWITCH FUNCTION		
PDS. 1	PDS. 2	PDS. 3
DN	DEF	(DN)
2-3	OPEN	2-1

() =Momentary



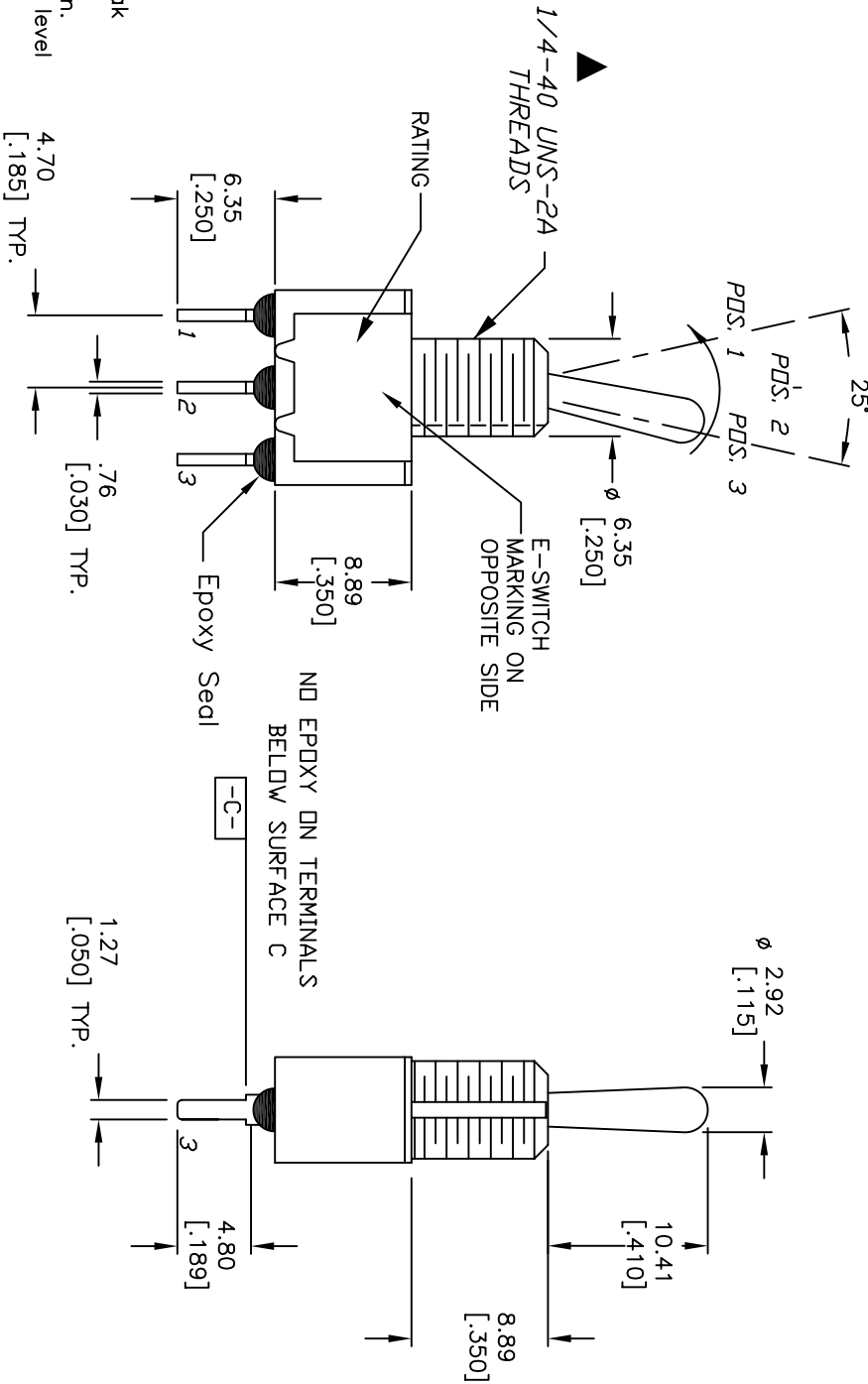
CIRCUIT: SPDT

NOTES:

1. ALL DIMENSIONS IN MM [INCH]
2. GENERAL TOLERANCE: X.X=±0.4
X.XX=±0.25
3. TERM. NOS. FOR REF. ONLY
4. RATING: 5A @120VAC or 28VDC;
2A @250VAC
5. FIXED TERMINAL/MOVING CONTACT:
Copper Alloy W/Silver Plate.
6. ELECTRICAL LIFE: 50,000 make-and-break
cycles at full load.
7. INSULATION RESISTANCE: 1,000M ohm min.
8. DIELECTRIC STRENGTH: 1000V RMS @sea level
9. OPERATING TEMP.: -30°C to +85°C
10. 2002/95/EC (ROHS) COMPLIANT.
11. HARDWARE TO BE SHIPPED BULK

- T100000 - HEXNUT - QTY 2
- T100011 - LOCKWASHER - QTY 1
- T100015 - LOCKRING - QTY 1

12. ▲ DENOTES CRITICAL PARAMETER.



REV. A		18437		RELEASE FOR PRODUCTION		3/13/09		BLR	
REV.		ECN No.		DESCRIPTION		DATE		CHKD	
THE INFORMATION CONTAINED IN THIS DOCUMENT IS PROPRIETARY TO E-SWITCH AND IS NOT TO BE COPIED OR TRANSFERRED									
TITLE				100SP5T1B1M2QE H					
SCALE		DATE		DR		DWG		REV	
2:1		3/13/09		BLR		ST115003		A	