

MICRO SWITCH
a Honeywell Division
FED. MFG. CODE 91929

SWITCH - TOGGLE

32NT91 SERIES CHART 1

THIS DRAWING COVERS A PROPRIETARY ITEM AND IS THE PROPERTY OF MICRO SWITCH, A DIVISION OF HONEYWELL. THIS DRAWING IS NOT TO BE COPIED OR USED WITHOUT THE APPROVAL OF MICRO SWITCH

CATALOG LISTING	CIRCUIT MADE WITH TOGGLE LEVER IN			ELECTRICAL DATA
	KEYWAY SIDE (1-2, 4-5)	CENTER (1-2, 4-5)	OPPOSITE KEYWAY (2-3, 5-6)	
32NT91-1	ON	OFF	ON	L191 15A 125, 250, 277 VAC 1/2HP 125 VAC 1HP 250, 277 VAC 5A 125 VAC "L"
32NT91-2	OFF	NONE	ON	
32NT91-3	ON	NONE	ON	
32NT91-21	NONE	OFF	ON	
32NT91-31	NONE	ON	ON	
32NT91-4	MOM OFF	NONE	ON	
32NT91-5	MOM ON	OFF	ON	
32NT91-6	MOM ON	NONE	OFF	
32NT91-7	MOM ON	OFF	MOM ON	L192 10A 125, 250, 277 VAC 1/4HP 125 VAC 1/2HP 250, 277 VAC 3A 125 VAC "L"
32NT91-8	MOM ON	NONE	ON	
(A)	NONE	ON	MOM ON	
32NT91-61	MOM ON	OFF	NONE	

ELECTRICAL DATA

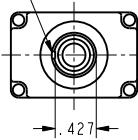
L191 15A 125, 250, 277 VAC
1/2HP 125 VAC
1HP 250, 277 VAC
5A 125 VAC "L"



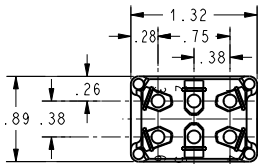
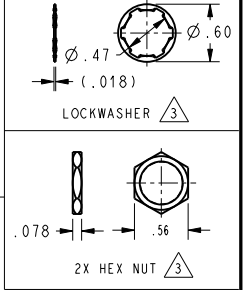
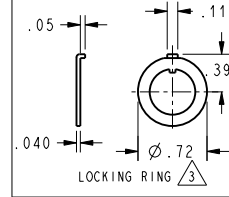
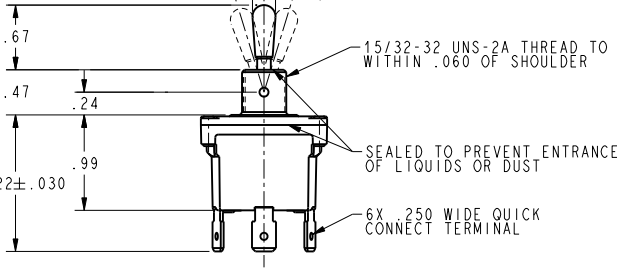
L192 10A 125, 250, 277 VAC
1/4HP 125 VAC
1/2HP 250, 277 VAC
3A 125 VAC "L"



.076±.008 WIDE KEYWAY



17°±4°
34°±8° TOTAL TRAVEL
Ø .240



NOTES

- 1 - SWITCHES ARE CAPABLE OF WITHSTANDING A TEMPERATURE OF 160°F CONTINUOUSLY AT FULL RATED LOAD
- 2 - MICRO SWITCH CAT. LIST. MARKED ON SIDE OF SWITCH FURNISHED UNASSEMBLED
- 3 - APPLIES ONLY TO "ON" AND "MOMENTARY ON" POSITIONS
- 4 - TO ORDER WITHOUT HARDWARE ADD (-NH) SUFFIX TO CATALOG LISTING
- 5 -

THIRD ANGLE PROJECTION	
SCALE	FULL
DO NOT SCALE PRINT	
UNLESS OTHERWISE SPECIFIED TOLERANCES ARE	
ONE PLACE	(.01) ±.030
TWO PLACE	(.00) ±.015
THREE PLACE	(.000) ±.005
ANGLES	±
WEIGHT	

ANSI Y14.5M-1982 APPLIES

CATALOG LISTING
32NT91 SERIES CHART 1
PAGE 1 OF 1
ISSUE 7
RELEASE NO. PR-20625
REPLACES
CHECK
REVISIONS
A C095305 SM 9NOV89
B C0-94361 M/S 23 NOV 89
C 207782 C.S. 1 9NOV99
D 0002684 C.S. 1 27 NOV 93
E 0002302 C.S. 1 10 DEC 93
CHECK
SAV 9NOV99
CHECK
TSM
PTC/CAD 2D
DRAWN