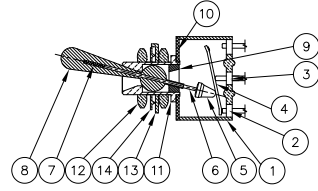


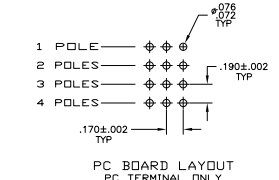
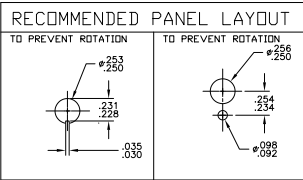
No.	Component name	Base material	Finish
1	Housing	High temp. UL 94V-0, green	
2	End terminal	silver clad copper alloy	5 microinches min. gold
3	Center terminal	copper alloy	5 microinches min. gold
4	Rocker contact	silver clad copper alloy	5 microinches min. gold
5	Actuator	phenolic resin, UL94 HB, black	
6	Plunger	stainless steel	
7	Spring	music wire	
8	Toggle	brass	chrome or nickel
9	Retainer	Polyamide, UL94 HB, black	
10	Frame	cold rolled steel	zinc or nickel
11	Bushing	brass	100 microinches min. nickel over 10 microinches min. copper
12	Mounting nuts (2)	brass	200 microinches min. bright nickel
13	Locating ring	cold rolled steel	zinc or nickel
14	Internal tooth lockwasher	steel	zinc or nickel



NOT TO SCALE

Specifications-see note 3			
<b>Current rating UL &amp; CSA</b>	6A @ 125 VAC (resistive) 3A @ 250 VAC (resistive) 4A @ 28 VDC (resistive)		
<b>Termination resistance</b>	20 milliohms max @ 2-4 VDC, 1A		
<b>Insulation resistance</b>	1,000 megohms min.		
<b>Withstanding voltage</b>	1,000 VAC		
<b>Travel</b>	24 +/- 6 degrees		
<b>Actuation force</b>	.05 to 1.5 kgf		
<b>Operating temperature</b>	-20C to +85C		
<b>Storage temperature</b>	-40C to +85C		
<b>Contact timing</b>	break before make		
<b>Terminal seal</b>	epoxy or insert molded		
<b>Durability</b>		<b>2 Position</b>	<b>3 Position</b>
Parameter			<b>Momentary</b>
mechanical (no load)	150,000	100,000	80,000
250 VAC (3A resistive)	80,000	60,000	60,000
125 VAC (6A resistive)	80,000	60,000	60,000
28 VDC (4A resistive)	60,000	50,000	40,000

Part Number	Alco Model	Poles	Throws	Function	Terminal	Terminal Diagram	Comments
4-1437558-8	MTA406PPC	4	2	ON OFF ON	PC		
4-1437558-7	MTA406PAPC	2	3	ON ON ON	PC		
4-1437558-6	MTA406PA	2	3	ON ON ON	Wire lug		note 7
4-1437558-5	MTA406P	4	2	ON OFF ON	Wire lug		note 7
4-1437558-4	MTA406NPC	4	2	ON ON	PC		
4-1437558-3	MTA406N	4	2	ON ON	Wire lug		
4-1437558-2	MTA306HPC	3	2	ON OFF(ON)	PC		
4-1437558-1	MTA306H	3	2	ON OFF(ON)	Wire lug		
4-1437558-0	MTA306FPC	3	2	ON (ON)	PC		
3-1437558-9	MTA306F	3	2	ON (ON)	Wire lug		
3-1437558-8	MTA306EPC	3	2	ON OFF ON	PC		
3-1437558-7	MTA306E	3	2	ON OFF ON	Wire lug		
3-1437558-6	MTA306DPC	3	2	ON ON	PC		
3-1437558-5	MTA306D	3	2	ON ON	Wire lug		
3-1437558-4	MTA206TPC	2	2	ON OFF(ON)	PC		
3-1437558-3	MTA206TA	1	3	ON ON (ON)	Wire lug		note 6
3-1437558-2	MTA206T	2	2	ON OFF(ON)	Wire lug		
3-1437558-1	MTA206SPC	2	2	(ON) OFF (ON)	PC		
3-1437558-0	MTA206SA	1	3	(ON) ON (ON)	Wire lug		note 6
2-1437558-9	MTA206S	2	2	(ON) OFF (ON)	Wire lug		
2-1437558-8	MTA206RPC	2	2	ON (ON)	PC		
2-1437558-7	MTA206R	2	2	ON (ON)	Wire lug		
2-1437558-6	MTA206PPC	2	2	ON OFF ON	PC		
2-1437558-5	MTA206PAPC	1	3	ON ON ON	PC		note 6
2-1437558-4	MTA206PA	1	3	ON ON ON	Wire lug		note 6
2-1437558-3	MTA206P	2	2	ON OFF ON	Wire lug		
2-1437558-2	MTA206NPC	2	2	ON ON	PC		
2-1437558-1	MTA206N	2	2	ON ON	Wire lug		
1-1437558-9	MTA106HPC	1	2	ON OFF(ON)	PC		
1-1437558-8	MTA106H	1	2	ON OFF(ON)	Wire lug		
1-1437558-7	MTA106GPC	1	2	(ON) OFF (ON)	PC		
1-1437558-6	MTA106G	1	2	(ON) OFF (ON)	Wire lug		
1-1437558-5	MTA106FPC	1	2	ON (ON)	PC		
1-1437558-4	MTA106F	1	2	ON (ON)	Wire lug		
1-1437558-3	MTA106EPC	1	2	ON OFF ON	PC		
1-1437558-2	MTA106E	1	2	ON OFF ON	Wire lug		
1-1437558-1	MTA106DPC	1	2	ON ON	PC		
1571616-1	MTA106DUL	1	2	ON ON	Wire lug		
1-1437558-0	MTA106D	1	2	ON ON	Wire lug		



- NOTES:
- TERMINAL NUMBERS ARE FOR REFERENCE ONLY AND DO NOT APPEAR ON THE SWITCHES.
  - EACH SWITCH SUPPLIED WITH THE FOLLOWING MOUNTING HARDWARE:  
 (2) 1/4-40 UNS-2B HEX NUTS  
 (1) INTERNAL TOOTH LOCKWASHER  
 (1) LOCATING RING
  - WIRE LUG CONTACTS WILL ACCEPT 2 #20 AWG SOLID OR STRANDED WIRES.
  - CUSTOMER INSTALLED EXTERNAL JUMPER BETWEEN TERMINALS 2 AND 4 REQUIRED FOR 1 POLE 3 THROW FUNCTION.
  - CUSTOMER INSTALLED EXTERNAL JUMPER BETWEEN TERMINALS 2 AND 4 AS WELL AS 8 AND 10 REQUIRED FOR 2 POLE 3 THROW FUNCTION.
- OBSOLETE

THIS DRAWING IS A CONTROLLED DOCUMENT. **TE Connectivity**

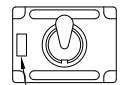
TOGGLE SWITCH, MTA SERIES  
 VERTICAL MOUNT

DATE 03/01/11  
 SIZE 1 3 1/2  
 REV 1

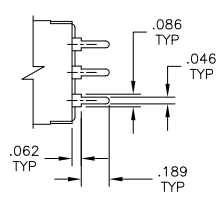
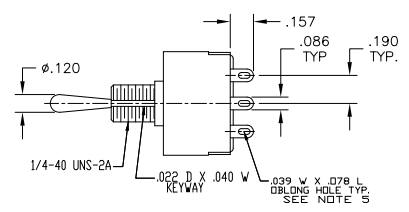
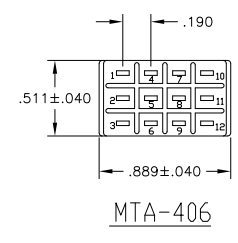
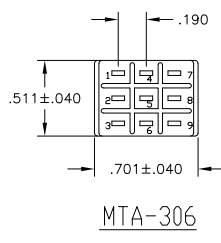
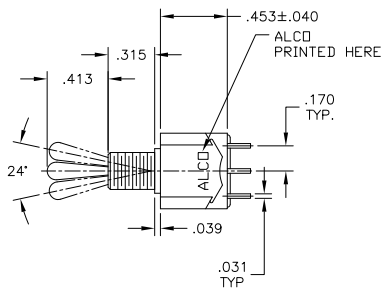


THIS DRAWING IS UNPUBLISHED  
 ALL RIGHTS RESERVED

REV. NO.		REVISIONS		DATE	BY	APP'D
AD	00	1	1			

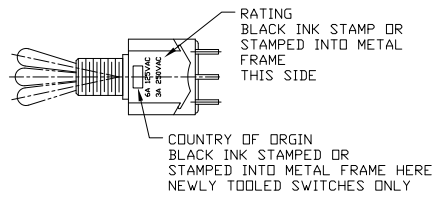


COUNTRY OF ORIGIN STAMPED HERE EXISTING SWITCHES ONLY



WIRE LUG TERMINAL

PC TERMINAL



THIS DRAWING IS A CONTROLLED DOCUMENT.		BY: [blank]	DATE: [blank]	TE Connectivity	
DESIGNED BY: [blank]	DESIGNED DATE: [blank]	BY: [blank]	DATE: [blank]	TOGGLE SWITCH, MTA SERIES VERTICAL MOUNT	
APPROVED BY: [blank]	APPROVED DATE: [blank]	BY: [blank]	DATE: [blank]	SIZE: [blank]	DRAWING NO: [blank]
				SIZE: A1	DATE: 00779
				SCALE: 1:1	SHEET: 3 OF 3