

CONVERSION CHART	
INCH	MM
.002	0.05
.012	0.30
.022	0.56
.028	0.71
.039	0.99
.059	1.50
.079	2.00
.098	2.49
.100	2.54
.134	3.40
.138	3.51
.193	4.90
.217	5.51
.236	6.00
.295	7.50
.315	8.00
.374	9.50
.394	10.01
.709	18.01
.748	19.00
.866	22.00
.945	24.00
1.000	25.40

BCD COMPLEMENT CODE 137									
POS	0	1	2	3	4	5	6	7	8
C	X	X	X	X	X	X	X	X	X
1	X	X	X	X	X	X	X	X	X
2	X	X	X	X	X	X	X	X	X
4	X	X	X	X	X	X	X	X	X
6	X	X	X	X	X	X	X	X	X

BCD CODE 131									
POS	0	1	2	3	4	5	6	7	8
C	X	X	X	X	X	X	X	X	X
1	X	X	X	X	X	X	X	X	X
2	X	X	X	X	X	X	X	X	X
4	X	X	X	X	X	X	X	X	X
6	X	X	X	X	X	X	X	X	X

DECIMAL CODE 111									
POS	0	1	2	3	4	5	6	7	8
C	X	X	X	X	X	X	X	X	X
0	X								
1		X							
2			X						
3				X					
4					X				
5						X			
6							X		
7								X	
8									X
9									

CHANGE OVER SWITCH CODE 400		
POS	C	A
0	X	X
1	X	X
2	X	X
3	X	X
4	X	X
5	X	X
6	X	X
7	X	X
8	X	X
9	X	X

HEXADECIMAL CODE 301															
POS	0	1	2	3	4	5	6	7	8	9	A	B	C	D	E
C	X	X	X	X	X	X	X	X	X	X	X	X	X	X	X
1	X	X	X	X	X	X	X	X	X	X	X	X	X	X	X
2	X	X	X	X	X	X	X	X	X	X	X	X	X	X	X
4	X	X	X	X	X	X	X	X	X	X	X	X	X	X	X
8	X	X	X	X	X	X	X	X	X	X	X	X	X	X	X

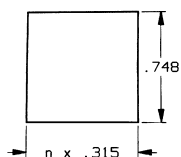
MODEL NUMBER	CODE	DESCRIPTION	CHAR.
DP58111AK	111	DECIMAL CODE (1 of 10)	0-9
DP58131AK	131	1-2-4-8 BCD CODE	0-9
DP58131AL	131	BCD, EXTENDED PCB FOR DIODES	0-9
DP58137AK	137	BCD, COMPLEMENT CODE	0-9
DP58137AL	137	BCD, COMPLEMENT, EXT. PCB FOR DIODE	0-9
DP58400AK	400	SPOT, REPEATING READOUT, 10 POS.	+/-
DP58131AKLS	131	BCD CODE, PC PINS AT REAR	0-9
DP58131AKLSL	131	BCD CODE, RIGHT ANGLE PC PINS	0-9
DP58137AKLS	137	BCD COMPLEMENT CODE, PC PINS	0-9
DP58137AKLSL	137	BCD COMPLEMENT CODE, RIGHT ANGLE PC PINS	0-9
DP58301AK	301	HEXADECIMAL CODE (16 POS.)	0-A-F
DP58301AKLS	301	HEXADECIMAL CODE (16 POS.) PC PINS	0-A-F
DP58301AKLSL	301	HEXADECIMAL CODE (16 POS.) RIGHT ANGLE PC PINS	0-A-F
DP58400AKLS	400	SPOT, 10 POS. REPEATING READOUT	+/-
DP58400AKLSL	400	SPOT, 10 POS. REPEATING READOUT RIGHT ANGLE PC PINS	+/-

#### SPECIFICATIONS:

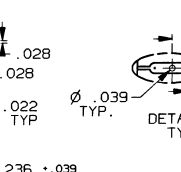
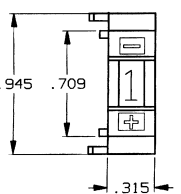
MATERIALS:  
CASE: PPO, BLACK MATTE FINISH.  
ACTUATOR BUTTONS: PPO, BLACK MATTE FINISH.  
WINDOW: THERMOPLASTIC RESIN.  
PCB: GLASS EPOXY TYPE, FR4  
MOVING CONTACT: COPPER ALLOY, GOLD PLATE OVER NICKEL.  
FIXED CONTACT: COPPER, GOLD PLATE OVER NICKEL.  
TERMINALS: COPPER, GOLD PLATE OVER NICKEL.  
ELECTRICAL:  
CONTACT RATING: 0.4 VA @ 20 VDC OR PEAK AC.  
INITIAL CONTACT RESISTANCE: 0.15 OHMS MAX.  
LIFE EXPECTANCY: MORE THAN 10<sup>8</sup> OPERATIONS  
MECHANICAL:  
ACTUATION FORCE: APPROX. 14 oz. (4 N)  
ENVIRONMENTAL:  
OPERATING TEMPERATURE: -4°F TO +176°F (-20°C TO +80°C)

#### NOTES:

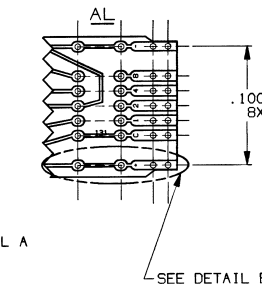
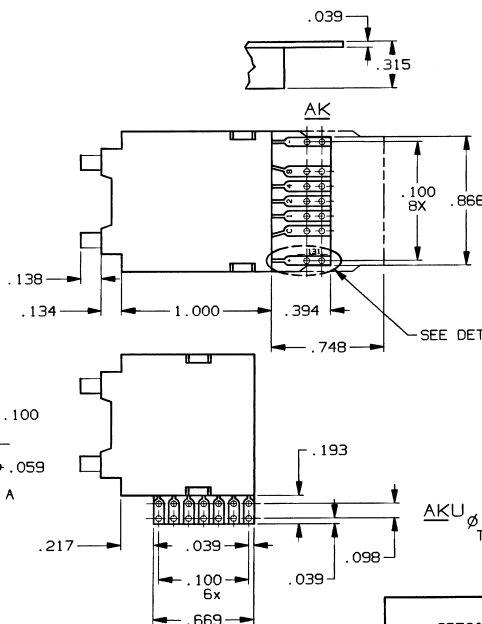
- INTERPRET DRAWING PER ASME Y14.5M-1994.
- ASSEMBLED PARTS TO BE PACKAGED FOR SHIPMENT IN ITEMS ANTISTATIC TREATED TO MEET THE REQUIREMENTS OF AUGAT SPECIFICATION NO. SPEC 224.
- CHARACTER COLOR: WHITE ON BLACK BACKGROUND. CHARACTER HEIGHT: 10/16 DIGIT. .193/.134.



TOLERANCE ±.002  
UNLESS OTHERWISE NOTED



SOLDER PINS FOR  
PRINTED CIRCUITS  
(ORDER DESCRIPTION LS)



#### MARKING DETAIL

131	137	301	400	111	0	1	2	3	4	5	6	7	8	9
131	137	301	400	111	0	1	2	3	4	5	6	7	8	9

#### MARKING DETAIL

131	137	301	400	111	0	1	2	3	4	5	6	7	8	9
131	137	301	400	111	0	1	2	3	4	5	6	7	8	9

OUTLINE DRAWING			
SPECIFICATIONS ARE SUBJECT TO CHANGES WITHOUT NOTICE			
TOLERANCES (EXCEPT AS NOTED) ANGULAR = ±1/2° DECIMAL .XX = ±.012 DECIMAL .XXX = ±.012 DECIMAL .XXXX = ±.012	FILE NAME: 800230UT	OTREACTORY: CODSWITCH	ORIGINAL DATE OF DRAWING: 3/25/81
UNLESS OTHERWISE SPECIFIED DIMENSIONS ARE IN INCHES DO NOT SCALE PRINT	MATERIAL: SEE SPECIFICATIONS ABOVE	FINISH: SEE SPECIFICATIONS ABOVE	DRAWN: V.J. MARTIN
AUGAT CONFIDENTIAL This document contains information which is the exclusive property of Augat Inc. Distribution, reproduction or use by others is not permitted without the expressed written consent of Augat Inc.	CHECKED: B. BUCKHEIT	APPROVED: D. SARKISIAN	DATE: 3/25/81
	CODE IDENT. NO. 91506	DWG. SIZE C	DATE: 1/7/93
	NEXT ASSY:		

AUGAT		P.O. Box 2510 452 John Dietsch Blvd. INC. Attleboro, MA. 02763	
TITLE: OUTLINE DRAWING		REV. 3	
CODE SWITCH DUAL PUSHBUTTON DPS-8 SERIES		DWG. NO. 80023-SD	
PRODUCT CODE: H13		SCALE: 2/1	
SHEET 1 OF 1			