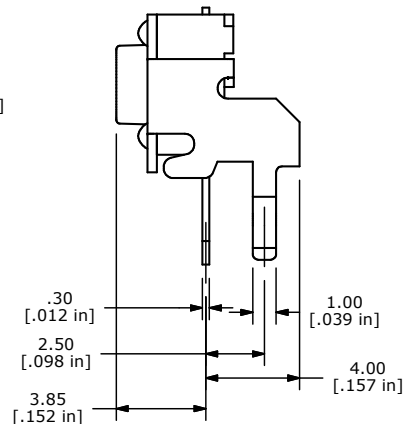
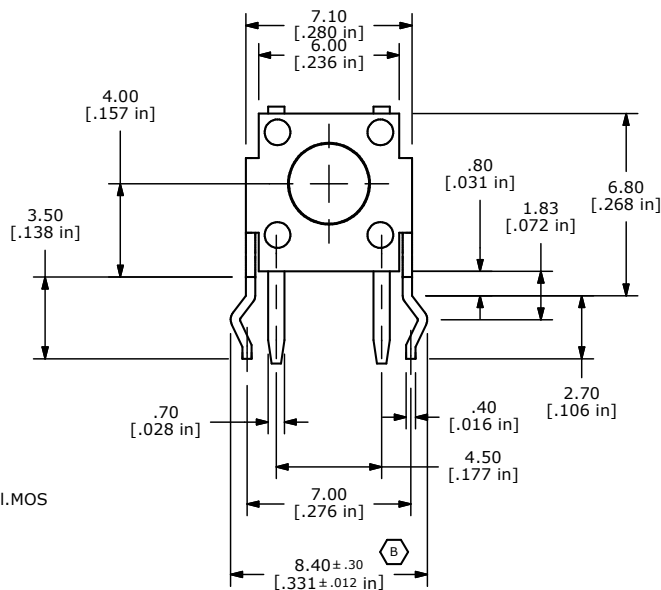
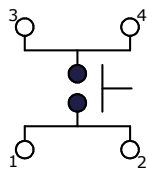
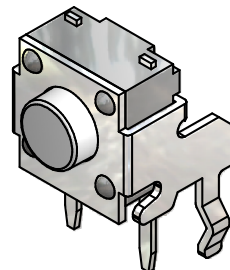
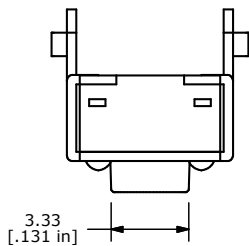
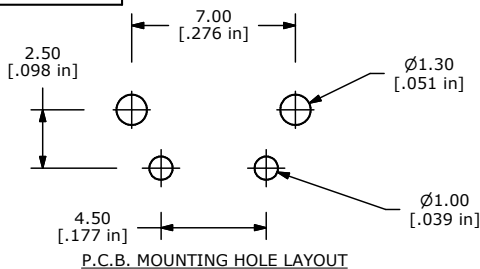


SHEET 1 OF 1



- NOTES:
1. ALL DIMENSIONS IN MM [INCH]
 2. GENERAL TOLERANCE: $x.xx \pm 0.4$
 $x.xx \pm 0.25$
 3. TERM. NOS. FOR REF. ONLY
 4. RATING: 50mA, @12V DC
 5. TRAVEL: 0.25 ± 0.1 mm
 6. CONTACT RESISTANCE: 50m ohms max initial.MOS & TTC COMPATIBLE
 7. ELECTRICAL LIFE: 5,000,000 CYCLES MIN.
 8. INSULTION RESISTANCE: 100M ohms min.
 9. DIELECTRIC STRENGTH: 250VA
 10. OPERATING TEMP.: -30°C to 85°C
 11. ▲ DENOTES CRITICAL PARAMETER
 12. CONTACTS: SILVER PLATED
 - ▲ 13. OPENING FORCE: 65 ± 20 GRAMS
 14. PACKAGING: 1000 PCS PER POLYBAG



E-SWITCH



B	18742	LEG TOLERANCE WAS +/- 0.1	1/4/2010	BLR
A	16116	NEW PART RELEASE	6/13/06	CT
REV	PCR NO	DESCRIPTION	DATE	BY

TITLE LL1105VF065Q				
SCALE 4:1	DATE 1/4/2010	DR BLR	DWG P090004	REV B

THE INFORMATION CONTAINED IN THIS DOCUMENT IS PROPRIETARY TO E-SWITCH AND IS NOT TO BE COPIED OR TRANSFERRED