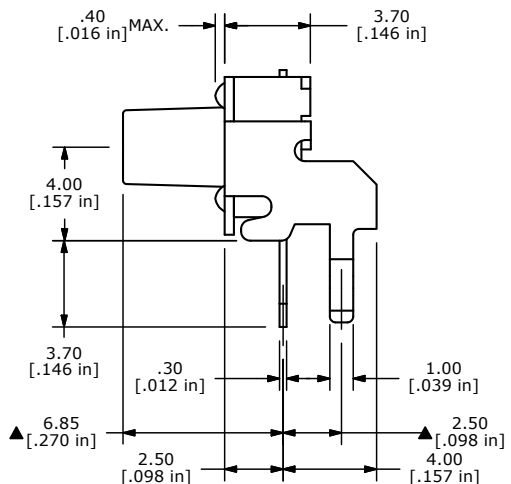
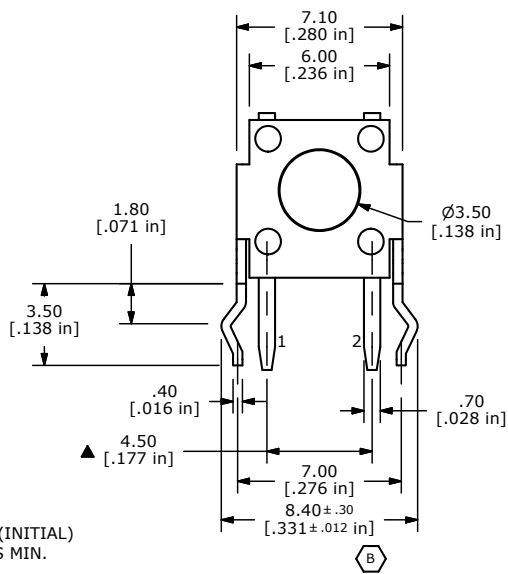
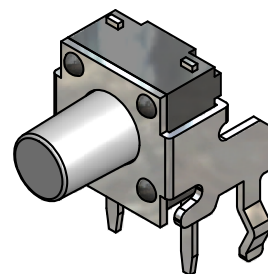
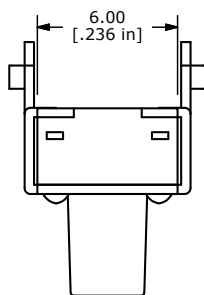


- NOTES:
1. ALL DIMENSIONS IN MM
  2. GENERAL TOLERANCE: X.X=±0.4  
X.XX=±0.25
  3. TERM. NOS. FOR REFERENCE ONLY.
  - ▲ 4. RATING: 12VDC, 50mA
  5. OPERATING FORCE: 100±50 gms
  6. TRAVEL: 0.25 +0.2/-0.1 mm
  7. CONTACT RESISTANCE: 100 MILLI OHMS MAX. (INITIAL)
  8. MECHANICAL/ELECTRICAL LIFE 100,000 CYCLES MIN.
  - ▲ 9. CONTACT MATERIAL: SILVER
  10. ▲ DENOTES CRITICAL PARAMETER
  11. 2002/95/EC (ROHS) COMPLIANT



B	19502	ADDED TOLERANCE	12/08/10	BGL
A	17770	RELEASED FOR PRODUCTION	10/15/07	BF
REV	PCR NO	DESCRIPTION	DATE	BY

TITLE TL1105MF100Q				
SCALE 4:1	DATE 10/15/2007	DR BF	DWG P020238	REV B

THE INFORMATION CONTAINED IN THIS DOCUMENT IS PROPRIETARY TO E-SWITCH AND IS NOT TO BE COPIED OR TRANSFERRED