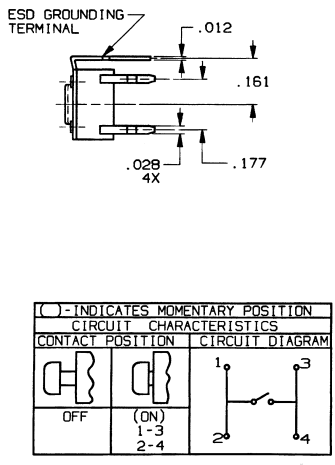
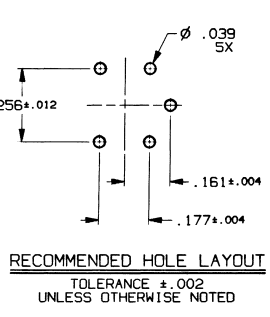
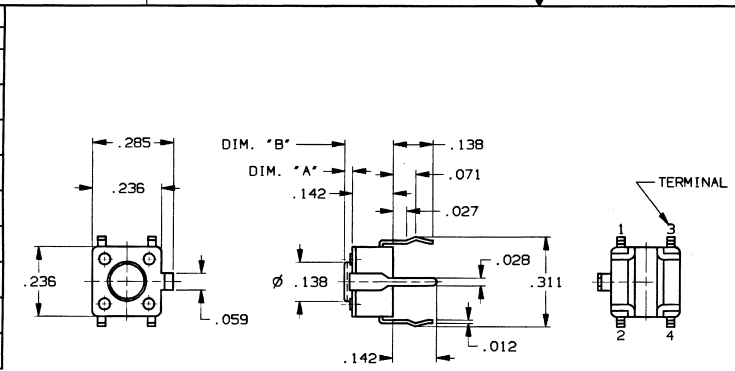


CONVERSION CHART

INCH	MM	INCH	MM
.002	0.05	.287	7.30
.004	0.10	.311	7.90
.010	0.25	.315	8.00
.012	0.30	.335	8.51
.027	0.69	.370	9.40
.028	0.71	.374	9.50
.039	1.00	.512	13.00
.055	1.40	.527	13.39
.059	1.50	.669	17.53
.071	1.80		

RECOMMENDED HOLE LAYOUT

.134	3.40
.138	3.50
.142	3.60
.146	3.70
.161	4.10
.169	4.30
.173	4.40
.177	4.50
.193	4.90
.196	5.00
.232	5.90
.236	6.00
.256	6.50
.276	7.00
.285	7.25



SPECIFICATIONS:

MATERIALS:
CASE: POLYAMIDE, 94HB, COLOR: BLACK.
COVER: STAINLESS STEEL
ACTUATOR BUTTON: SEE TABLE.
MOVING CONTACT: COPPER ALLOY, SILVER CLAD.
FIXED CONTACT/TERMINALS: COPPER ALLOY, SILVER PLATE.

ELECTRICAL:
CONTACT RATING: 50mA @ 12 VDC
INITIAL CONTACT RESISTANCE: 500 MEGOHMS MAX.
INSULATION RESISTANCE: 500 MEGOHMS @ 500 VDC MIN.
DIELECTRIC STRENGTH: 250 VAC
LIFE EXPECTANCY: 20,000 CYCLES MIN.

MECHANICAL:
ACTUATION FORCE: SEE TABLE.
ACTUATION TRAVEL: .010 in. (.25 mm)
SOLDER HEAT RESISTANCE: THROUGH 500°F PER MIL-STD-202 METHOD 210.

ENVIRONMENTAL:
OPERATING TEMPERATURE: -4°F TO +158°F (-20°C TO +70°C)
STORAGE TEMPERATURE: -22°F TO +176°F (-30°C TO +80°C).

NOTES:

1. INTERPRET DRAWING PER ASME Y14.5M-1994.

(#=)	ACTUATION FORCE	ACTUATOR BUTTON COLOR
(BLANK)	100 TO 350g	SEE BELOW
L	50 TO 150g	BROWN
A	160 TO 400g	RED
AA	370 TO 620g	LIGHT BLUE

MODEL NO.	DIM. "A"	DIM. "B"	ACTUATOR BUTTON COLOR	ACTUATOR BUTTON MATERIAL
FSM1J	.028	.169	BLACK	POLYESTER
FSM3J	.055	.196	BLACK	POLYESTER
FSM5J	.134	.276	BLUE	ACETAL
FSM7J	.232	.374	BLACK	ACETAL
FSM9J	.146	.287	IVORY	ACETAL
FSM11J	.173	.315	WHITE	ACETAL
FSM13J	.370	.512	BLACK	ACETAL
FSM15J	.527	.669	BLACK	ACETAL
FSM17J	.193	.335	BLACK	ACETAL

REVISIONS

REV	DESCRIPTION
0	INITIAL RELEASE
1	REVISED
2	REVISED
3	REVISED
4	REVISED
5	REVISED
6	REVISED

OUTLINE DRAWING

SPECIFICATIONS ARE SUBJECT TO CHANGES WITHOUT NOTICE

THIRD ANGLE PROJECTION

TOLERANCES (EXCEPT AS NOTED)
ANGULAR = ±1°
DECIMAL .XX = ±
DECIMAL .XXX = ±.012
DECIMAL .XXXX = ±

UNLESS OTHERWISE SPECIFIED DIMENSIONS ARE IN INCHES DO NOT SCALE PRINT

ORIGINAL DATE OF DRAWING: 12-29-93

DATE: 12-29-93

FILE NAME: 81074OUT

DIRECTORY: PSHSWITCH

DRAWN: C. MORAN

CHECKED: ' DATE: 12-29-93

MATERIAL: SEE SPECIFICATIONS

APPROVED: J. SYLVIA

DATE: 12-30-93

FINISH: SEE SPECIFICATIONS

CODE IDENT. NO. 91506

DWG. SIZE C

NEXT ASSY: ' SCALE: ' SHEET 1 OF 1

AUGAT 482 JOHN DIETSCH BLVD. ATLEBORO FALLS, MASS. 02763 INC.

TITLE: **OUTLINE DRAWING** MICRO-MINIATURE PUSHBUTTON SWITCH FSM1J - FSM17J

DWG. NO. 81074-SD

REV. 6

PRODUCT CODE: BTB

SCALE: SHEET 1 OF 1