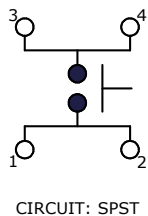
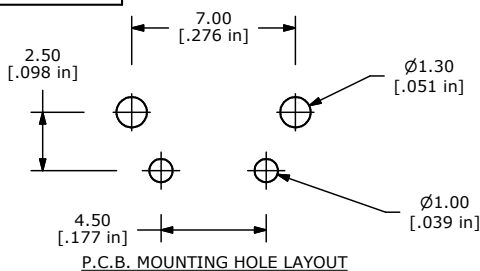
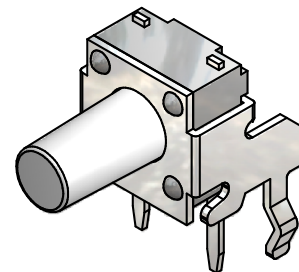
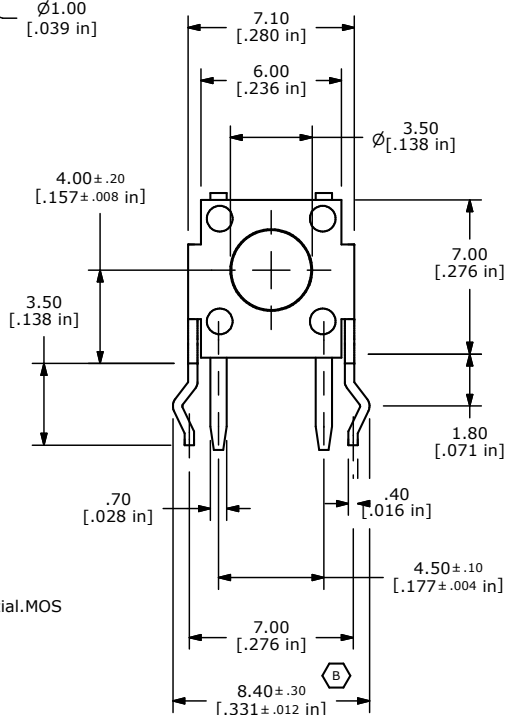


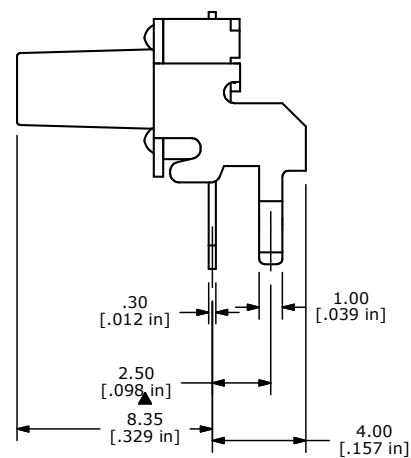
SHEET 1 OF 1



- NOTES:
1. ALL DIMENSIONS IN MM [INCH]
 2. GENERAL TOLERANCE: $x.xx \pm 0.4$
 $x.xx \pm 0.25$
 3. TERM. NOS. FOR REF. ONLY
 4. RATING: 50mA, @12V DC
 5. TRAVEL: 0.25 ± 0.1 mm
 6. CONTACT RESISTANCE: 50m ohms max initial.MOS & TTC COMPATIBLE
 7. ELECTRICAL LIFE: 5 MILLION CYCLES.
 8. INSULTION RESISTANCE: 100M ohms min.
 9. OPERATING TEMP.: -30°C to 85°C
 10. ▲ DENOTES CRITICAL PARAMETER
 - ▲11. CONTACTS: SILVER
 - ▲12. OPENING FORCE: 65 GRAMS
 13. PACKAGE: BULK, 750 PIECES PER POLYBAG
 14. 2002/95/EC (ROHS) COMPLIANT



ISOMETRIC



B	18742	LEG TOLERANCE WAS +/- 0.1	1/4/2010	BLR
A	16607	RELEASED FOR PRODUCTION	11/8/2006	TN
REV	PCR NO	DESCRIPTION	DATE	BY

TITLE LL1105SF065Q				
SCALE 4:1	DATE 1/4/2010	DR BLR	DWG P010242	REV B

THE INFORMATION CONTAINED IN THIS DOCUMENT IS PROPRIETARY TO E-SWITCH AND IS NOT TO BE COPIED OR TRANSFERRED