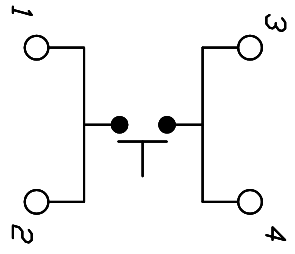
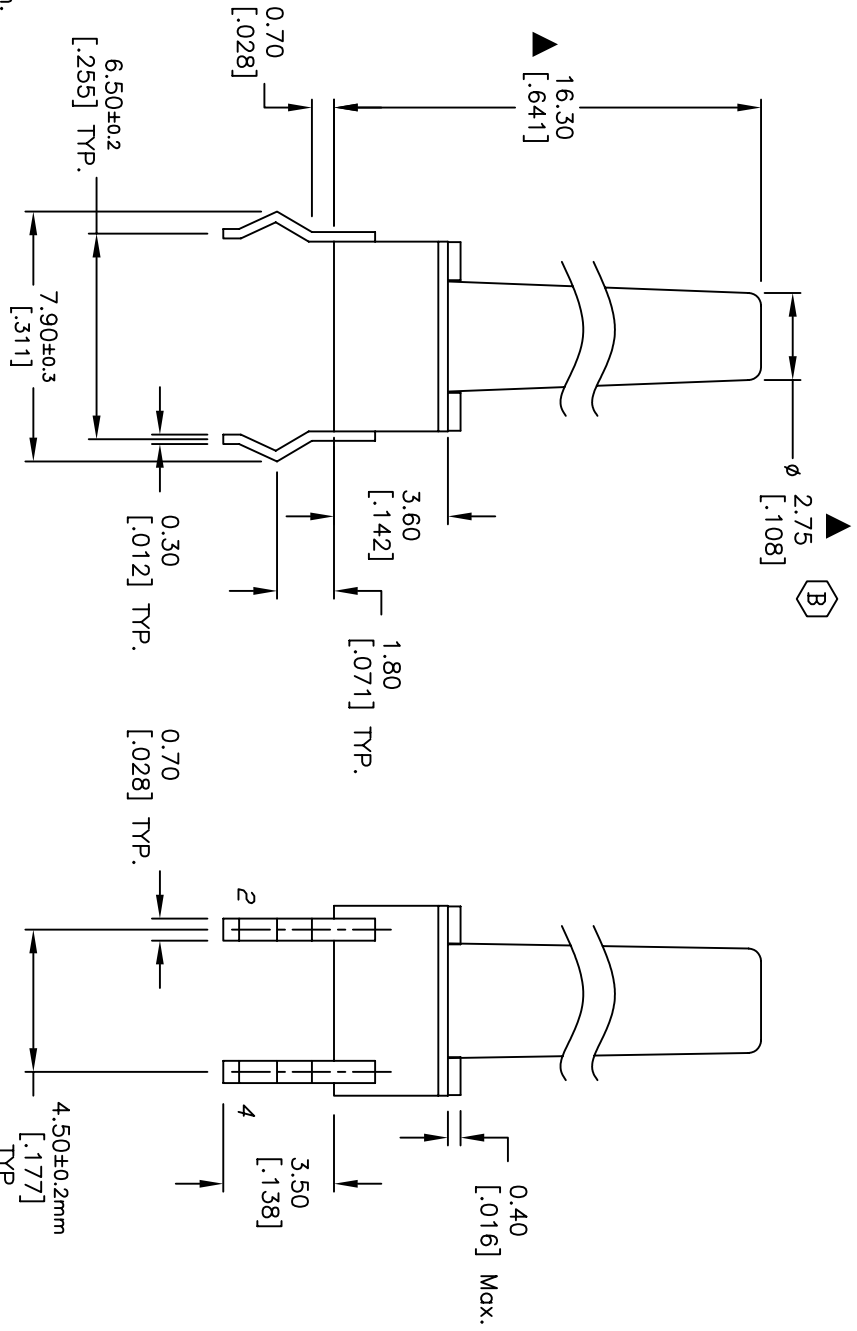


RECOMMENDED P.C.B. LAYOUT
SCALE 3:1



CIRCUIT: SPST

- NOTES:
1. ALL DIMENSIONS IN MM [INCH]
 2. GENERAL TOLERANCE: X.X=±0.4
X.XX=±0.25
 3. TERM. NOS. FOR REFERENCE ONLY.
 4. RATINGS: 12VDC, 50ma
 5. OPERATING FORCE: 100±50gf
 6. TRAVEL: 0.25±0.1mm
 7. CONTACT RESISTANCE: 100 mΩ-Ωms Max.
 8. DIELECTRIC STRENGTH: 250V RMS min.
 9. INSULATION RESISTANCE: 100 Mega-Ωms min.
 10. ELECTRICAL LIFE: 100,000 CYCLES min.
 11. ▲ DESIGNATE MAJOR FEATURE:
 12. 2002/95/EC (ROHS) COMPLIANT.



B	18460	DIM CHANGE (WAS 3.30)	3/20/09	BLR
A	12302	RELEASED FOR PRODUCTION	7/10/02	CJB
REV.	ECN No.	DESCRIPTION	DATE	CHKD

THE INFORMATION CONTAINED IN THIS DOCUMENT IS PROPRIETARY TO E-SWITCH AND IS NOT TO BE COPIED OR TRANSMITTED		TITLE		SCALE	DATE	DR	DWG	REV
E-SWITCH		LAMB INDUSTRIES		4:1	3/20/09	BLR	D310080	B
		TL1105Y F100 Q						