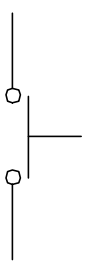


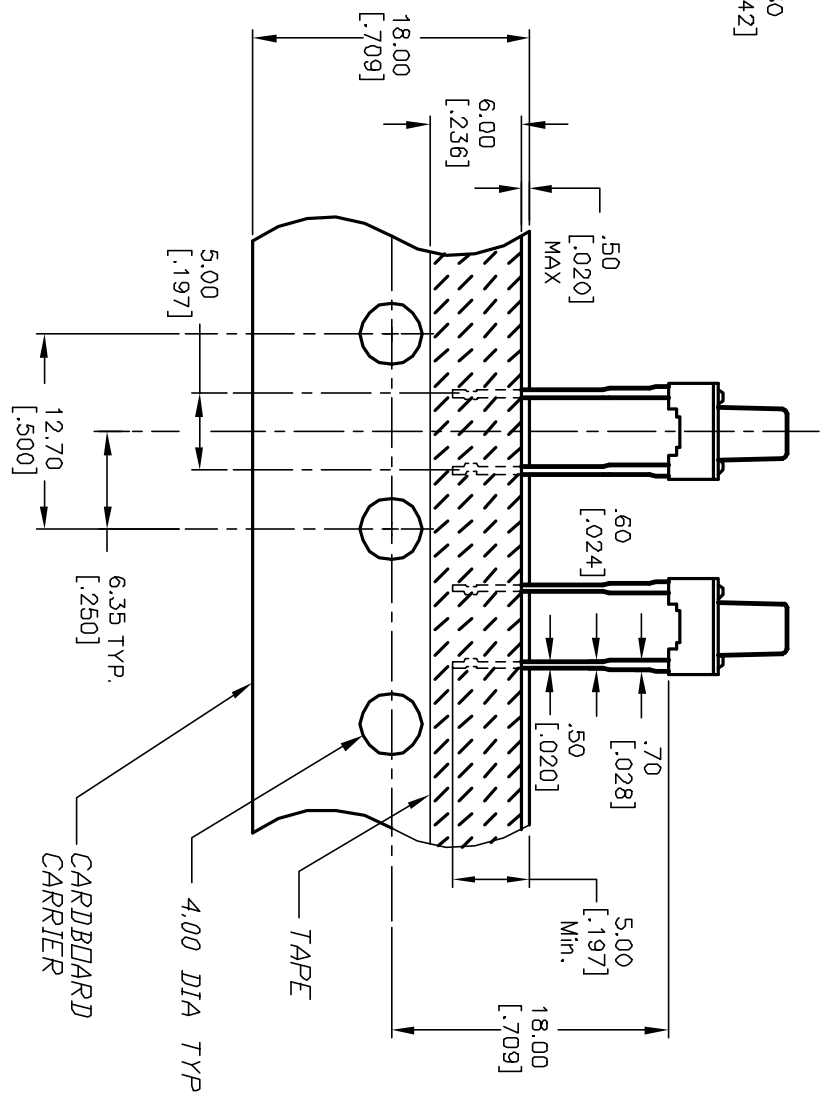
RECOMMENDED P.C.B. LAYOUT



CIRCUIT: SPST



- NOTES:
1. ALL DIMENSIONS IN MM [INCH]
  2. GENERAL TOLERANCE: X.X=±0.4  
X.XX=±0.25
  3. CONTACT RATING: 50mA @12V DC
  4. CONTACT MATERIAL: SILVER
  5. OPERATING FORCE: 260±50gf
  6. TRAVEL: 0.25 +0.2/-0.1
  7. CONTACT RESISTANCE: 100mILLI Ohms max.
  8. ELECTRICAL LIFE: 100,000 CYCLES
  9. PACKAGING:  
CARRIER IS FOLDED EVERY 25 PITCHES  
(24) SWITCHES PER FOLD  
(1,000) SWITCHES PER BOX



REV.	ECN No.	DESCRIPTION	DATE	CHKD
A	11623	RELEASED FOR PRODUCTION	8/21/01	CB

TITLE	SCALE	DATE	DR	DWG	REV
TL59C F260 Q	2:1	8/21/01	CB	D310563	A

**E-SWITCH®**

THE INFORMATION CONTAINED IN THIS DOCUMENT IS PROPRIETARY TO E-SWITCH AND IS NOT TO BE COPIED OR TRANSFERRED