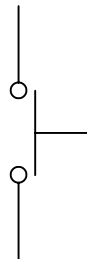
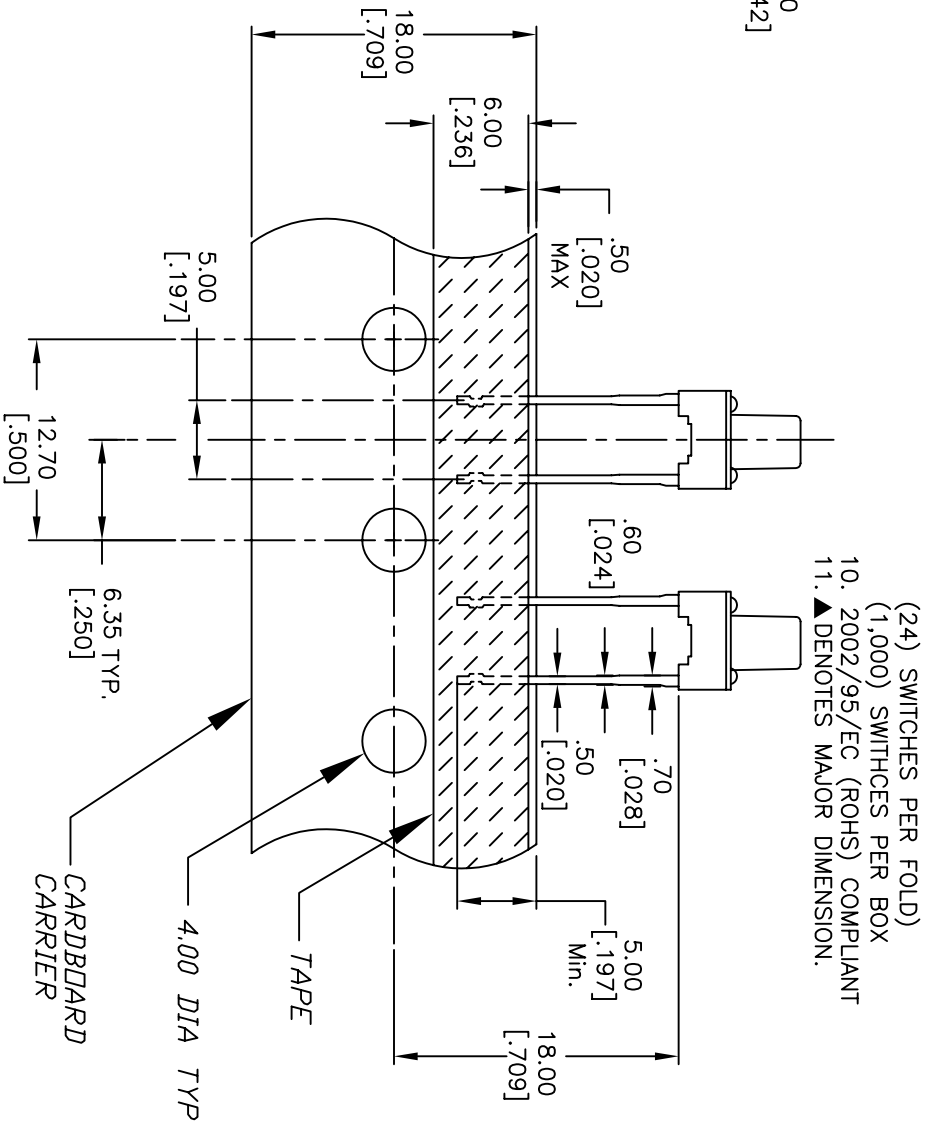


RECOMMENDED P.C.B. LAYOUT



CIRCUIT: SPST

- NOTES:
1. ALL DIMENSIONS IN MM [INCH]
 2. GENERAL TOLERANCE: X.X=±0.4 X.XX=±0.25
 3. CONTACT RATING: 50mA @12V DC
 4. CONTACT MATERIAL: SILVER
 5. OPERATING FORCE: 160±50gf
 6. TRAVEL: 0.25 +0.2/-0.1
 7. CONTACT RESISTANCE: 100mILLI Ohms max.
 8. ELECTRICAL LIFE: 100,000 CYCLES
 9. PACKAGING:
CARRIER IS FOLDED EVERY 25 PITCHES (24) SWITCHES PER FOLD (1,000) SWITCHES PER BOX
 10. 2002/95/EC (ROHS) COMPLIANT
 11. ▲ DENOTES MAJOR DIMENSION.



| | | | | |
|------|---------|--------------------------|---------|------|
| B | 16892 | UPDATE NOTES, .30 TO .25 | 1/19/07 | TN |
| A | 11623 | RELEASED FOR PRODUCTION | 8/21/01 | CB |
| REV. | ECN No. | DESCRIPTION | DATE | CHKD |

| | | | | |
|-------|-----------|----|---------|-----|
| SCALE | DATE | DR | DWG | REV |
| 2:1 | 1/19/2007 | TN | P010581 | B |



TL59CF160Q

THE INFORMATION CONTAINED IN THIS DOCUMENT IS PROPRIETARY TO E-SWITCH AND IS NOT TO BE COPIED OR TRANSMITTED