

KSM Series Side Actuated Detect Switches

Features/Benefits

- Low profile – 1,5 mm
- Momentary, normally closed contact
- Thermo-formed tape & reel
- RoHS compliant and compatible

Typical Applications

- Automotive
- Position sensing switch
- Edge card reset switch
- Smart card presence switch detector
- DSL and fiber optic networks



Specifications

FUNCTION: Momentary action

CONTACT TYPE: SPST Normally closed

Mechanical

TRAVEL TO BREAK: $0.3 \text{ mm} \leq T_e \leq 0.70 \text{ mm}$

TOTAL TRAVEL: $1.72 \text{ mm} \leq T_m \leq 2.12 \text{ mm}$

FORCE AT MAXIMUM TRAVEL: $0.99 \text{ N} \leq F_a \leq 1.34 \text{ N}$

OPERATING LIFE: 50,000 cycles

Packaging

Switches are delivered on continuous tape, in reels of 2,000 pieces

Electrical

MAXIMUM POWER:	1.0 VA
MAXIMUM VOLTAGE:	32 VDC
MINIMUM VOLTAGE:	20 mV
MAXIMUM CURRENT DC:	50 mA
MINIMUM CURRENT DC:	1 mA
CONTACT RESISTANCE:	$\leq 900 \text{ m}\Omega$
INSULATION RESISTANCE:	$\geq 10^9 \Omega$
DIELECTRIC STRENGTH:	$\geq 250 \text{ Vrms}$
BOUNCE TIME:	$\leq 3 \text{ ms}$

Environmental

OPERATING TEMPERATURE:	-40°C to +85°C
STORAGE TEMPERATURE:	-55°C to +85°C

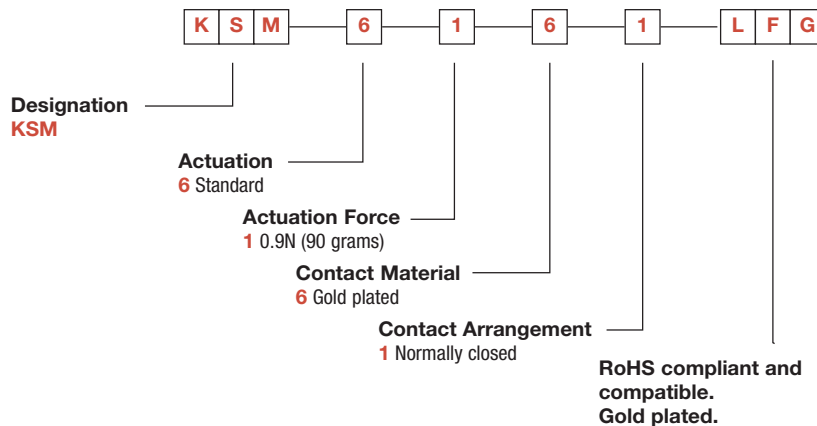
Process

SOLDERING: Compatible with lead free reflow process

NOTE: Specifications listed above are for switches with standard options. For information on specific and custom switches, consult Customer Service Center.

Build-A-Switch

To order, simply select desired option from each category and place in the appropriate box. Available options are shown and described on page E-23. For additional options not shown in catalog, consult our Customer Service Center.



Detect

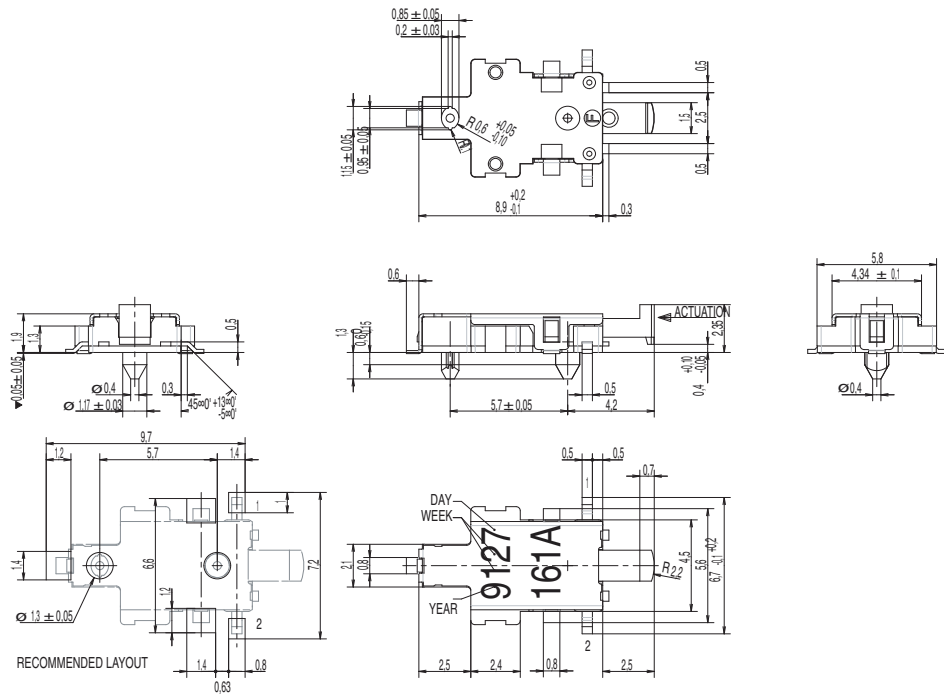


Dimensions are shown: mm
Specifications and dimensions subject to change

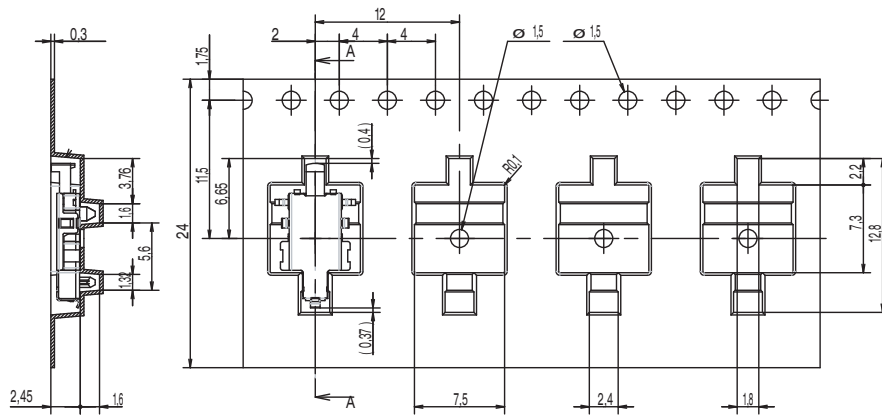
C&K

KSM Series Side Actuated Detect Switches

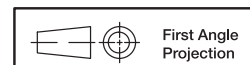
KSM



TAPE & REEL



Detect



Dimensions are shown: mm
Specifications and dimensions subject to change