

4

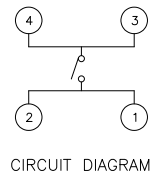
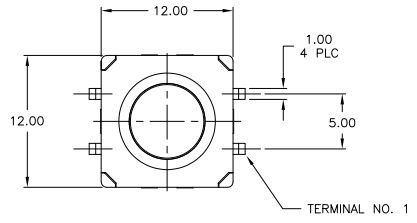
3

2

1

THIS DRAWING IS UNPUBLISHED. RELEASED FOR PUBLICATION. BY TYCO ELECTRONICS CORPORATION. ALL RIGHTS RESERVED.

LOC	DIST	REVISIONS		
F	LR	DESCRIPTION	DATE	BY
F		ECO-07-000908	02JUL07	MB MS



SPECIFICATIONS

MATERIALS
CASE: THERMOPLASTIC, UL94V-0, BLACK
ACTUATOR: THERMOPLASTIC, UL94V-0, BLACK
COVER: STAINLESS STEEL
SEAL: SILICON RUBBER, BLACK
CONTACT: STAINLESS STEEL, PLATING-SILVER
TERMINAL: BRASS, PLATING-SILVER/NICKEL

ELECTRICAL
MAX CONTACT RATING: 50MILLIAMPS@24V DC
MIN CONTACT RATING: 10MICROAMPS@1V DC
INITIAL CONTACT RESISTANCE: 100 MILLIOHMS MAX, PER EIA RS-448, METHOD 1
INSULATION RESISTANCE: 100 MEGOHMS MIN @ 100VDC PER EIA RS-186-13E
DIELECTRIC STRENGTH: 500 VAC
CONTACT BOUNCE: 10 MILLISECOND MAX PER EIA-448-18, METHOD 15

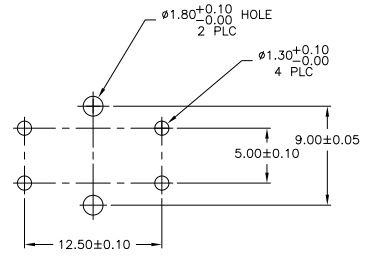
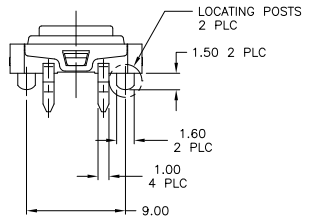
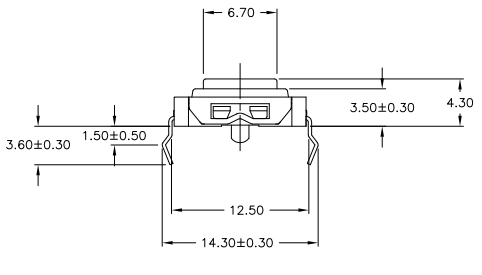
MECHANICAL
ACTUATOR OPERATING FORCE: SEE TABLE
ACTUATOR TRAVEL: 0.35±0.2mm

DURABILITY
UP TO 1,000,000 CYCLES, AT RATED LOAD PER EIA-RS-448, METHOD 8
FINAL CONTACT RESISTANCE: 200 MILLIOHMS MAX
CONTACT BOUNCE: 20 MILLISECONDS MAX
ACTUATOR FORCE: WITHIN ±30% OF INITIAL VALUE

ENVIRONMENTAL
OPERATING TEMPERATURE RANGE: -35°C to +85°C
STORAGE TEMPERATURE RANGE: -35°C to +85°C
HUMIDITY: 96 HOURS PER EIA-186-1E
INSULATION RESISTANCE: 10 MEGOHMS MIN
DIELECTRIC STRENGTH: 250VAC
CONTACT RESISTANCE: 100 MILLIOHMS MAX
DRY HEAT TEST: 85°C FOR 96 HOURS PER IEC 60068-2-2, TEST B,
NO CHANGE IN INITIAL ELECTRICAL AND MECHANICAL CHARACTERISTICS
COLD TEST: -35°C FOR 96 HOURS PER IEC 60068-2-1, TEST A,
NO CHANGE IN INITIAL ELECTRICAL AND MECHANICAL CHARACTERISTICS
THERMAL CYCLING: 5 CYCLES, -35°C to +85°C
HUMIDITY-TEMPERATURE CYCLING, EIA 364-31B, METHOD III
CONTACT RESISTANCE 100 MILLIOHMS MAX
RESISTANCE TO SOLDERING HEAT PER 109-202, COND B

SEALING PER IP67
SOLDERABILITY: PER EIA RS-186-9E

NOTES:
1. ALL MATERIALS AND FINISHES SHALL COMPLY WITH EU DIRECTIVE 2002/95/EC OF 27JAN2003 (ROHS)



160±70gf	WITH LOCATING POSTS	1571220-2
160±70gf	WITHOUT LOCATING POSTS	1571220-1
OPERATING FORCE	REMARKS	TYCO PART NUMBER

THIS DRAWING IS A CONTROLLED DOCUMENT.		DR: R. BROWN 16JAN2002	Tyco Electronics Corporation Harrisburg, PA 17105	
DIMENSIONS: MM		CHK: J. WYKHOOP 16JAN2002	1571220	
TOLERANCES UNLESS OTHERWISE SPECIFIED:		APP: H. WYKHOOP 16JAN2002	NAME: SWITCH ASSEMBLY, TACTILE, 12 X 12, SEALED	
0 PLC	±	APPLICATION SPEC:	SIZE: A2	CAGE CODE: 00779
1 PLC	±	WEIGHT:	DRAWING NO: 1571220	RESTRICTED TO:
2 PLC	±	ANGLES:	SCALE: 4:1	SHEET: 1 OF 1
3 PLC	±		CUSTOMER DRAWING	REV: F

AMP 1471-9 REV 31MM2000

1571220