

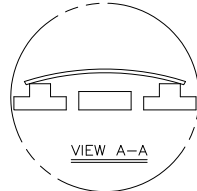
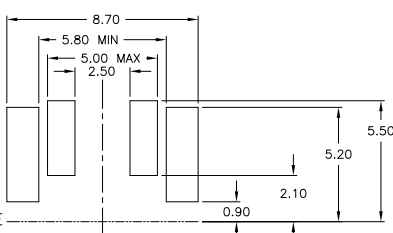
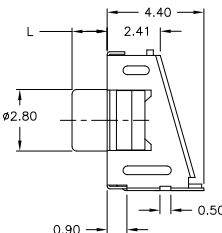
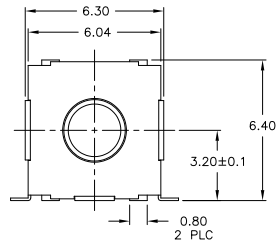
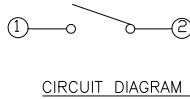
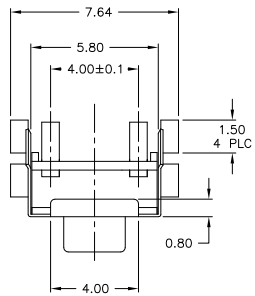
4

3

2

1

THIS DRAWING IS UNPUBLISHED. RELEASED FOR PUBLICATION
 BY TYCO ELECTRONICS CORPORATION. ALL RIGHTS RESERVED.



P.C.B MOUNTING SOLDER LAND DIMENSIONS

SPECIFICATIONS

MATERIALS
 CASE: THERMOPLASTIC, UL94V-0, IVORY
 ACTUATOR: SILICON RUBBER, COLOR-BLACK
 CONTACT: STAINLESS STEEL, PLATING-SILVER
 TERMINAL: BRASS, SILVER/NICKEL
 BRACKET: NICKEL SILVER

ELECTRICAL
 MAX CONTACT RATING: 50MILLIAMPS@24V DC
 MIN CONTACT RATING: 10MICROAMPS@1V DC
 INITIAL CONTACT RESISTANCE: 100 MILLIOHMS MAX, PER EIA RS-448, METHOD 1
 INSULATION RESISTANCE: 100 MEGOHMS MIN @ 100VDC PER EIA RS-186-13E
 DIELECTRIC STRENGTH: 500 VAC 50/60 HZ FOR 1 MINUTE
 CONTACT BOUNCE: 10 MILLISECOND MAX PER EIA-448-18, METHOD 15

MECHANICAL
 ACTUATOR OPERATING FORCE: SEE TABLE
 ACTUATOR TRAVEL: 0.35±0.2mm

DURABILITY
 UP TO 1,000,000 CYCLES, AT RATED LOAD PER EIA-RS-448, METHOD 8
 FINAL CONTACT RESISTANCE: 200 MILLIOHMS MAX
 CONTACT BOUNCE: 20 MILLISECONDS MAX
 ACTUATOR FORCE: WITHIN ±30% OF INITIAL VALUE

ENVIRONMENTAL
 OPERATING TEMPERATURE RANGE: -35°C to +85°C, 45% - 85% RH
 STORAGE TEMPERATURE RANGE: -35°C to +85°C
 HUMIDITY: 96 HOURS PER EIA-186-1E
 INSULATION RESISTANCE: 10 MEGOHMS MIN
 DIELECTRIC STRENGTH: 500VAC 50/60HZ FOR 1 MINUTE
 CONTACT RESISTANCE: 100 MILLIOHMS MAX
 DRY HEAT TEST: 85°C FOR 96 HOURS PER IEC 60068-2-2, TEST B,
 NO CHANGE IN INITIAL ELECTRICAL AND MECHANICAL CHARACTERISTICS
 COLD TEST: -35°C FOR 96 HOURS PER IEC 60068-2-1, TEST A,
 NO CHANGE IN INITIAL ELECTRICAL AND MECHANICAL CHARACTERISTICS
 THERMAL CYCLING: 5 CYCLES, -35°C to +85°C
 HUMIDITY-TEMPERATURE CYCLING, EIA 364-31B, METHOD III
 CONTACT RESISTANCE 100 MILLIOHMS MAX
 RESISTANCE TO SOLDERING HEAT PER 109-201, COND B

SEALING PER IP67 - CONTACT RESISTANCE 100 MILLIOHMS MAX AND MIL-STD-202F, METHOD 112 (TEST CONDITION D, EXCEPT WITH FLUID TEMPERATURE OF 85°C±5°C AND IMMERSER FOR 60 SECONDS)

SOLDERABILITY: PER EIA-364-52, CLASS 1, CATEGORY 2

NOTES:

- 1 PARTS TO BE PACKAGED ON TAPE AND REEL PER EIA-481
- 2 ALL MATERIALS AND FINISHES SHALL COMPLY WITH EU DIRECTIVE 2002/95/EC OF 27JAN2003 (ROHS)
- 3 OBSOLETE PARTS: OBSOLETE CIS STREAMLINING PER D.RENAUD/D.SINISI

1	OBSOLETE		16mm	T&R	260±100gf	3.96mm	1571407-4
3	OBSOLETE	N/A	N/A	BULK	260±100gf	3.96mm	1571407-3
1			16mm	T&R	260±100gf	1.60mm	1571407-2
		N/A	N/A	BULK	260±100gf	1.60mm	1571407-1
			Pitch	Type Width	Packaging	Operating force	Dim L TE P/N

THIS DRAWING IS A CONTROLLED DOCUMENT. 090202

DESIGNED BY: M. BINNER
 CHECKED BY: M. SARVER
 APPROVED BY: M. SARVER

TYCO ELECTRONICS Corporation
 Harrisburg, Pa 17105-3608

SWITCH ASSEMBLY, TACTILE, RIGHT ANGLE, SMT, SEALED

SIZE: A2 CASE CODE: 00779 DRAWING NO: 1571407 RESTRICTED TO: C=1571407

CUSTOMER DRAWING SCALE: 8:1 SHEET 1 OF 1 REV: H2

1571407

A