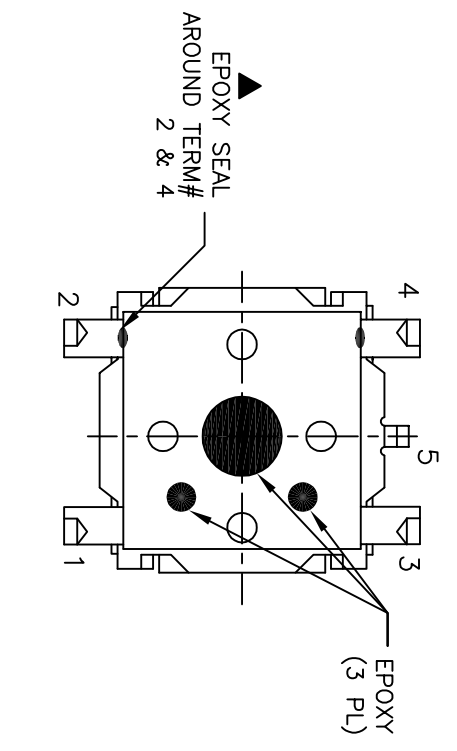
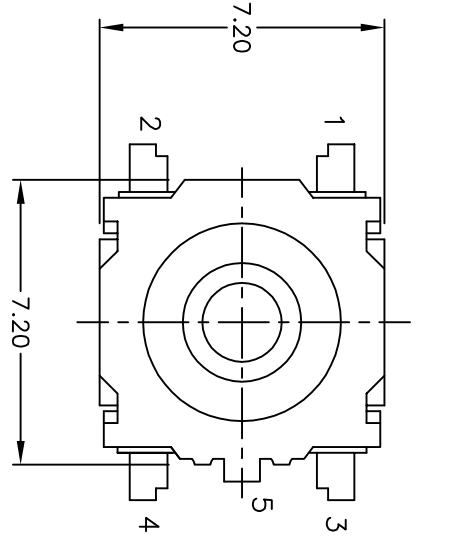
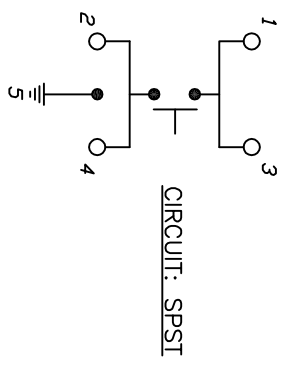


RECOMMENDED P.C.B. LAYOUT

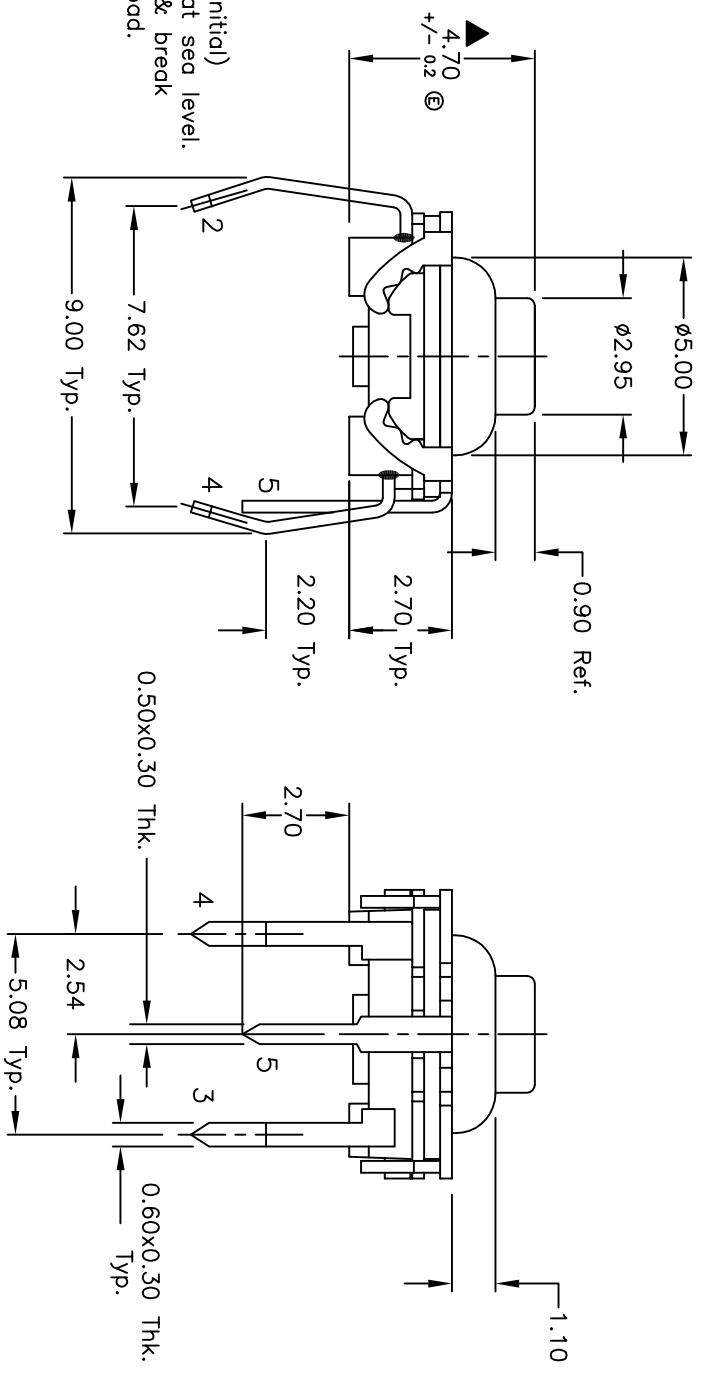


BOTTOM VIEW



NOTES:

1. ALL DIMENSIONS IN MM
2. GENERAL TOLERANCE: X.X=±0.4
X.XX=±0.25
3. TERM. NOS. FOR REF. ONLY
4. ACTUATION FORCE: 300±75gf
5. TRAVEL TO MAKE: 0.3mm +0.4/0.0
6. RATING: 30mA, @12V DC
7. CONTACT RESISTANCE: 50 MILLI-OHMS (initial)
8. DIELECTRIC STRENGTH: 300 V RMS min at sea level.
9. ELECTRICAL LIFE CYCLE: 150,000 make & break cycles at full load.
10. ▲ DESIGNATE MAJOR DIMENSIONS.
11. OPERATING TEMP: -40°C to +85°C
12. 2002/95/EC (ROHS) COMPLIANT



E	18193	BUTTON LENGTH TOLERANCE CHG.	7/31/08	BLR
D	15471	REV. BOTTOM VIEW	10/28/05	PH
C	12191	REVISED NOTE 9, ADD NOTE11	5/28/02	CB
B	10888	REVISED AND REDRAWN	1/26/99	MM
REV.	ECN NO.	DESCRIPTION	DATE	CHKD

SCALE		DATE	DR	DWG	REV
5:1		7/31/08	BLR	L400101	E
TITLE		GS 4.70 F300 QP			