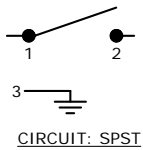
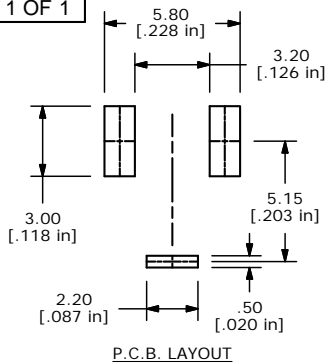
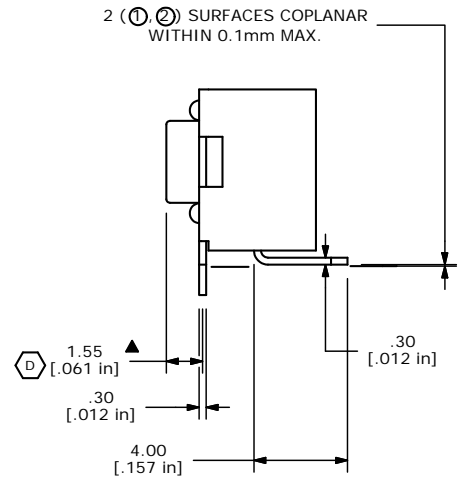
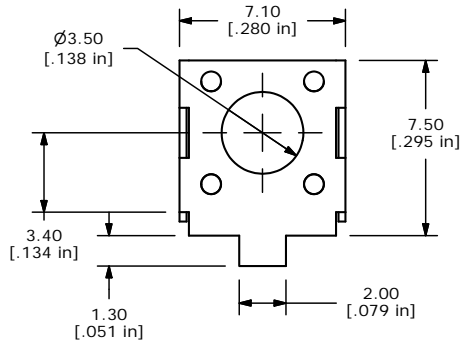
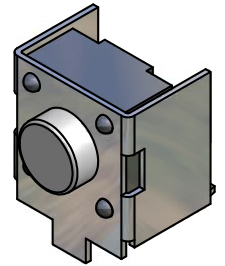
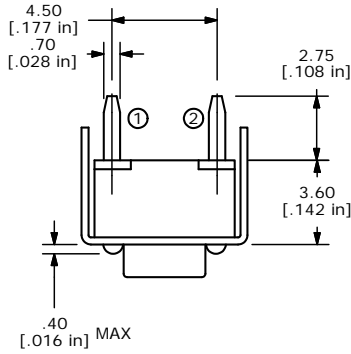


SHEET 1 OF 1



- NOTES:
1. ALL DIMENSIONS IN MM [INCH]
  2. GENERAL TOLERANCE: X.X=±0.4  
X.XX=±0.25
  3. TERMINAL NUMBERS FOR REFERENCE ONLY.
  4. RATING: 12VDC 50mA
  - ▲ 5. OPERATING FORCES: 160±50gf
  6. TRAVEL: 0.25±0.1 mm
  7. CONTACT RESISTANCE: 100m OHMS MAX
  8. INSULATION RESISTANCE: 100M OHMS MIN.
  9. DIELECTRIC STRENGTH: 250VAC FOR 1 MINUTE.
  10. OPERATING TEMP: -20C TO +70C
  11. STORAGE TEMPERATURE: -40C TO + 80C
  12. LIFE: 80,000 CYCLES.
  - ▲ 13. PACKAGING: TAPE & REEL, 500 PIECES PER REEL.
  14. ▲ DENOTES CRITICAL PARAMETER.
  15. 2002/95/EC (ROHS) COMPLIANT AND HALOGEN FREE



TITLE TL3320BF160Q

D	19632	CHANGE ACTUATOR HEIGHT	01/31/11	BMA
REV	PCR NO	DESCRIPTION	DATE	BY

THE INFORMATION CONTAINED IN THIS DOCUMENT IS PROPRIETARY TO E-SWITCH AND IS NOT TO BE COPIED OR TRANSFERRED

SCALE	DATE	DR	DWG	REV
4:1	3/22/2010	BLR	D320010	D