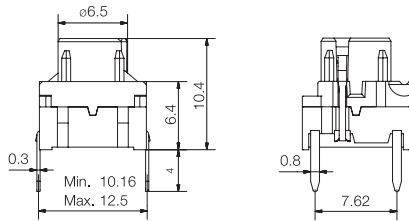


Technical Data

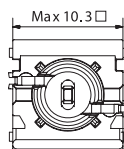
- ? through-hole or SMD
- ? 50mA/24VDC
- ? single pole/momentary
- ? 10.000.000 operations life time
- ? IP67 sealing
- ? temperature range:
high temp. switch; -40/+160°C
LED: -30/+85°C



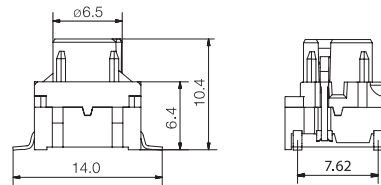
Dimensions (through-hole)



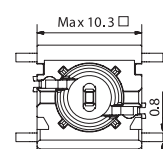
Top View



Dimensions (SMD)

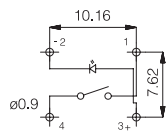


Top View

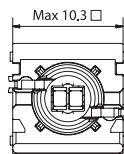
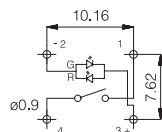


PCB layout and Circuit Diagram

1 LED

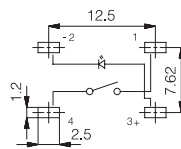


2 LEDs

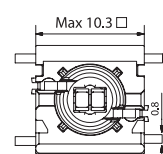
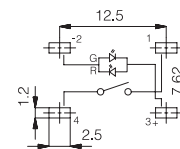


PCB layout and Circuit Diagram

1 LED



2 LEDs



Technical specifications for 4F switch and LEDs see pages 35 and 36

How to order

4 F

LED Illuminated Cap

Switch Mounting
SH9 surface mount
TH9 through-hole

LED
01
22
42
61
82
2242
8222
8242

Illuminated Cap

- 1D
- 1K,1KB,1KC
- 1N
- 1S
- 1T
- 1U
- 1V
- 1WA,1WD,1WP
- 1X

Colour code

- | | | | |
|----------------|-----|------------------------|------------------|
| 11,16 | Cap | Solid Colour | Illuminated Lens |
| 11,16 | | | |
| 10,12,14,16,18 | | 1E Solid Colour + lens | 1,2,4,6,8 |
| 11 | | 1F Solid Colour + lens | 1,2,4,6,8 |
| 16 | | 1Q Solid Colour + lens | 1,6 |
| 16 | | 1R Solid Colour + lens | 1,6 |
| 16 | | | |
| 16 | | | |
| 11 | | | |

Colour codes

- | LEDs | Illuminated Caps |
|-------------------|-------------------|
| 01 blue | 10 frosted blue |
| 22 green | 11 transparent |
| 42 yellow | 12 frosted green |
| 61 white | 14 frosted yellow |
| 82 red | 16 frosted white |
| 2242 green/yellow | 18 frosted red |
| 8222 red/green | |
| 8242 red/yellow | |

- | Lenses |
|-----------------|
| 1 transparent |
| 2 green |
| 4 yellow |
| 6 frosted white |
| 8 red |

Solid Colours

- | 1E,1F | 1Q,1R |
|-----------|----------|
| 00 blue | 00 blue |
| 02 green | 03 grey |
| 03 grey | 08 red |
| 04 yellow | 09 black |
| 06 white | |
| 08 red | |
| 09 black | |

Dimensions

- | Caps | See |
|-------------|------------|
| 1D,1E,1F | 1D/1E/1F |
| 1K,1KB,1KC | 1K/1KB/1KC |
| 1N | 1N |
| 1Q,1R | 1P/1Q/1R |
| 1S | 1S/2S |
| 1T,1U,1V | 1T/1U/1V |
| 1WA,1WD,1WP | 1W |
| 1X | 1X |

Ordering example: 4FSH98242 + 1D11 or 4FTH922 + 1T16

For updates of products and/or changes of specifications please see www.mec.dk